

**Key West Cruise Ship Data - Passenger Counts**

**Number of Passenger Arrivals**

*(Source: City of Key West Port Operations Office)*

Month	2004	2005	2006	2007	2008	2009	2010	2011	2012	2013	2014	2015
Jan	95,356	104,759	96,322	75,714	86,253	71,819	69,747	95,777	76,106	81,799	81,986	88,918
Feb	91,782	97,204	85,508	73,057	81,686	77,595	60,465	82,113	86,879	74,668	80,368	84,501
Mar	108,987	112,234	100,221	93,470	82,145	78,309	79,734	86,921	91,352	89,828	108,883	
Apr	88,213	89,646	89,444	81,119	78,328	72,938	72,484	77,691	73,143	63,134	78,431	
May	75,110	67,704	64,016	46,026	44,222	91,120	60,829	49,793	65,663	55,210	59,210	
Jun	69,907	64,204	62,702	47,437	35,910	79,830	69,457	46,502	59,844	44,073	48,950	
Jul	46,355	63,989	62,566	52,627	45,266	64,231	64,665	54,129	67,874	47,655	47,138	
Aug	62,023	68,728	50,600	69,083	33,517	58,605	71,077	69,442	55,407	50,179	38,059	
Sep	37,725	49,681	41,626	57,233	45,927	61,642	53,067	41,555	49,084	39,458	38,599	
Oct	64,920	38,120	60,080	68,205	50,362	64,745	77,422	64,161	63,268	55,520	49,153	
Nov	78,704	64,312	77,532	60,764	64,957	63,456	80,471	60,217	59,445	65,190	65,022	
Dec	114,988	103,652	97,576	92,184	92,359	75,119	90,852	83,157	65,648	98,418	101,161	
Total	934,070	924,233	888,193	816,919	740,932	859,409	850,270	811,458	813,713	765,132	796,960	173,419

**Key West Cruise Ship Data - Passenger Counts**

**Percentage Change from Prior Year**

*(Source: City of Key West Port Operations Office)*

Month	2004	2005	2006	2007	2008	2009	2010	2011	2012	2013	2014	2015
Jan	-12.9%	9.9%	-8.1%	-21.4%	13.9%	-16.7%	-2.9%	37.3%	-20.5%	7.5%	0.2%	8.5%
Feb	-16.4%	5.9%	-12.0%	-14.6%	11.8%	-5.0%	-22.1%	35.8%	5.8%	-14.1%	7.6%	5.1%
Mar	-0.7%	3.0%	-10.7%	-6.7%	-12.1%	-4.7%	1.8%	9.0%	5.1%	-1.7%	21.2%	
Apr	-15.1%	1.6%	-0.2%	-9.3%	-3.4%	-6.9%	-0.6%	7.2%	-5.9%	-13.7%	24.2%	
May	-1.3%	-9.9%	-5.4%	-28.1%	-3.9%	106.1%	-33.2%	-18.1%	31.9%	-15.9%	7.2%	
Jun	-8.2%	-8.2%	-2.3%	-24.3%	-24.3%	122.3%	-13.0%	-33.0%	28.7%	-26.4%	11.1%	
Jul	-40.6%	38.0%	-2.2%	-15.9%	-14.0%	41.9%	0.7%	-16.3%	25.4%	-29.8%	-1.1%	
Aug	-26.3%	10.8%	-26.4%	36.5%	-51.5%	74.9%	21.3%	-2.3%	-20.2%	-9.4%	-24.2%	
Sep	-42.4%	31.7%	-16.2%	37.5%	-19.8%	34.2%	-13.9%	-21.7%	18.1%	-19.6%	-2.2%	
Oct	1.1%	-41.3%	57.6%	13.5%	-26.2%	28.6%	19.6%	-17.1%	-1.4%	-12.2%	-11.5%	
Nov	6.4%	-18.3%	20.6%	-21.6%	6.9%	-2.3%	26.8%	-25.2%	-1.3%	9.7%	-0.3%	
Dec	-1.0%	-9.9%	-5.9%	-5.5%	0.2%	-18.7%	20.9%	-8.5%	-21.1%	49.9%	2.8%	
Total	-12.5%	-1.1%	-3.9%	-8.0%	-9.3%	16.0%	-1.1%	-4.6%	0.3%	-6.0%	4.2%	6.8%

**Key West Cruise Ship Data - Port Calls**

**Number of Port Calls**

*(Source: City of Key West Port Operations Office)*

Month	2004	2005	2006	2007	2008	2009	2010	2011	2012	2013	2014	2015
Jan	49	52	50	41	46	37	37	45	36	38	37	43
Feb	40	48	44	38	40	39	29	37	39	33	37	39
Mar	54	57	48	48	39	34	35	40	39	39	47	
Apr	42	51	41	39	37	34	31	34	27	25	32	
May	36	33	29	21	18	37	24	18	24	20	24	
Jun	31	28	26	20	14	29	26	16	21	15	16	
Jul	20	28	26	22	18	23	23	14	22	15	16	
Aug	28	31	21	28	13	21	26	25	18	16	13	
Sep	19	24	20	26	20	25	21	16	18	14	14	
Oct	34	18	29	35	22	28	35	27	23	22	20	
Nov	46	35	40	31	31	28	36	25	29	30	29	
Dec	63	55	51	49	46	34	39	36	31	44	51	
Total	462	460	425	398	344	369	362	333	327	311	336	82

**Key West Cruise Ship Data - Port Calls**

**Percentage Change from Prior Year**

*(Source: City of Key West Port Operations Office)*

Month	2004	2005	2006	2007	2008	2009	2010	2011	2012	2013	2014	2015
Jan	-18.3%	6.1%	-3.8%	-18.0%	12.2%	-19.6%	0.0%	21.6%	-20.0%	5.6%	-2.6%	16.2%
Feb	-28.6%	20.0%	-8.3%	-13.6%	5.3%	-2.5%	-25.6%	27.6%	5.4%	-15.4%	12.1%	5.4%
Mar	-6.9%	5.6%	-15.8%	0.0%	-18.8%	-12.8%	2.9%	14.3%	-2.5%	0.0%	20.5%	
Apr	-17.6%	21.4%	-19.6%	-4.9%	-5.1%	-8.1%	-8.8%	9.7%	-20.6%	-7.4%	28.0%	
May	12.5%	-8.3%	-12.1%	-27.6%	-14.3%	105.6%	-35.1%	-25.0%	33.3%	-16.7%	20.0%	
Jun	6.9%	-9.7%	-7.1%	-23.1%	-30.0%	107.1%	-10.3%	-38.5%	31.3%	-28.6%	6.7%	
Jul	-25.9%	40.0%	-7.1%	-15.4%	-18.2%	27.8%	0.0%	-39.1%	57.1%	-31.8%	6.7%	
Aug	-6.7%	10.7%	-32.3%	33.3%	-53.6%	61.5%	23.8%	-3.8%	-28.0%	-11.1%	-18.8%	
Sep	-34.5%	26.3%	-16.7%	30.0%	-23.1%	25.0%	-16.0%	-23.8%	12.5%	-22.2%	0.0%	
Oct	17.2%	-47.1%	61.1%	20.7%	-37.1%	27.3%	25.0%	-22.9%	-14.8%	-4.3%	-9.1%	
Nov	7.0%	-23.9%	14.3%	-22.5%	0.0%	-9.7%	28.6%	-30.6%	16.0%	3.4%	-3.3%	
Dec	3.3%	-12.7%	-7.3%	-3.9%	-6.1%	-26.1%	14.7%	-7.7%	-13.9%	41.9%	15.9%	
Total	-8.5%	-0.4%	-7.6%	-6.4%	-13.6%	7.3%	-1.9%	-8.0%	-1.8%	-4.9%	8.0%	10.8%

**Key West Cruise Ship Data - Passenger Counts**

**Year-to-Date Number of Passenger Arrivals**

*(Source: City of Key West Port Operations Office)*

Month	2004	2005	2006	2007	2008	2009	2010	2011	2012	2013	2014	2015
Jan	95,356	104,759	96,322	75,714	86,253	71,819	69,747	95,777	76,106	81,799	81,986	88,918
Feb	187,138	201,963	181,830	148,771	167,939	149,414	130,212	177,890	162,985	156,467	162,354	173,419
Mar	296,125	314,197	282,051	242,241	250,084	227,723	209,946	264,811	254,337	246,295	271,237	
Apr	384,338	403,843	371,495	323,360	328,412	300,661	282,430	342,502	327,480	309,429	349,668	
May	459,448	471,547	435,511	369,386	372,634	391,781	343,259	392,295	393,143	364,639	408,878	
Jun	529,355	535,751	498,213	416,823	408,544	471,611	412,716	438,797	452,987	408,712	457,828	
Jul	575,710	599,740	560,779	469,450	453,810	535,842	477,381	492,926	520,861	456,367	504,966	
Aug	637,733	668,468	611,379	538,533	487,327	594,447	548,458	562,368	576,268	506,546	543,025	
Sep	675,458	718,149	653,005	595,766	533,254	656,089	601,525	603,923	625,352	546,004	581,624	
Oct	740,378	756,269	713,085	663,971	583,616	720,834	678,947	668,084	688,620	601,524	630,777	
Nov	819,082	820,581	790,617	724,735	648,573	784,290	759,418	728,301	748,065	666,714	695,799	
Dec	934,070	924,233	888,193	816,919	740,932	859,409	850,270	811,458	813,713	765,132	796,960	

**Key West Cruise Ship Data - Passenger Counts**

**Year-to-Date Percentage Change from Prior Year**

*(Source: City of Key West Port Operations Office)*

Month	2004	2005	2006	2007	2008	2009	2010	2011	2012	2013	2014	2015
Jan	-12.9%	9.9%	-8.1%	-21.4%	13.9%	-16.7%	-2.9%	37.3%	-20.5%	7.5%	0.2%	8.5%
Feb	-14.7%	7.9%	-10.0%	-18.2%	12.9%	-11.0%	-12.9%	36.6%	-8.4%	-4.0%	3.8%	6.8%
Mar	-10.0%	6.1%	-10.2%	-14.1%	3.2%	-8.9%	-7.8%	26.1%	-4.0%	-3.2%	10.1%	
Apr	-11.2%	5.1%	-8.0%	-13.0%	1.6%	-8.5%	-6.1%	21.3%	-4.4%	-5.5%	13.0%	
May	-9.7%	2.6%	-7.6%	-15.2%	0.9%	5.1%	-12.4%	14.3%	0.2%	-7.3%	12.1%	
Jun	-9.5%	1.2%	-7.0%	-16.3%	-2.0%	15.4%	-12.5%	6.3%	3.2%	-9.8%	12.0%	
Jul	-13.2%	4.2%	-6.5%	-16.3%	-3.3%	18.1%	-10.9%	3.3%	5.7%	-12.4%	10.6%	
Aug	-14.7%	4.8%	-8.5%	-11.9%	-9.5%	22.0%	-7.7%	2.5%	2.5%	-12.1%	7.2%	
Sep	-16.9%	6.3%	-9.1%	-8.8%	-10.5%	23.0%	-8.3%	0.4%	3.5%	-12.7%	6.5%	
Oct	-15.6%	2.1%	-5.7%	-6.9%	-12.1%	23.5%	-5.8%	-1.6%	3.1%	-12.6%	4.9%	
Nov	-13.9%	0.2%	-3.7%	-8.3%	-10.5%	20.9%	-3.2%	-4.1%	2.7%	-10.9%	4.4%	
Dec	-12.5%	-1.1%	-3.9%	-8.0%	-9.3%	16.0%	-1.1%	-4.6%	0.3%	-6.0%	4.2%	

**Key West Cruise Ship Data - Port Calls**

**Year-to-Date Number of Port Calls**

*(Source: City of Key West Port Operations Office)*

Month	2004	2005	2006	2007	2008	2009	2010	2011	2012	2013	2014	2015
Jan	49	52	50	41	46	37	37	45	36	38	37	43
Feb	89	100	94	79	86	76	66	82	75	71	74	82
Mar	143	157	142	127	125	110	101	122	114	110	121	
Apr	185	208	183	166	162	144	132	156	141	135	153	
May	221	241	212	187	180	181	156	174	165	155	177	
Jun	252	269	238	207	194	210	182	190	186	170	193	
Jul	272	297	264	229	212	233	205	204	208	185	209	
Aug	300	328	285	257	225	254	231	229	226	201	222	
Sep	319	352	305	283	245	279	252	245	244	215	236	
Oct	353	370	334	318	267	307	287	272	267	237	256	
Nov	399	405	374	349	298	335	323	297	296	267	285	
Dec	462	460	425	398	344	369	362	333	327	311	336	

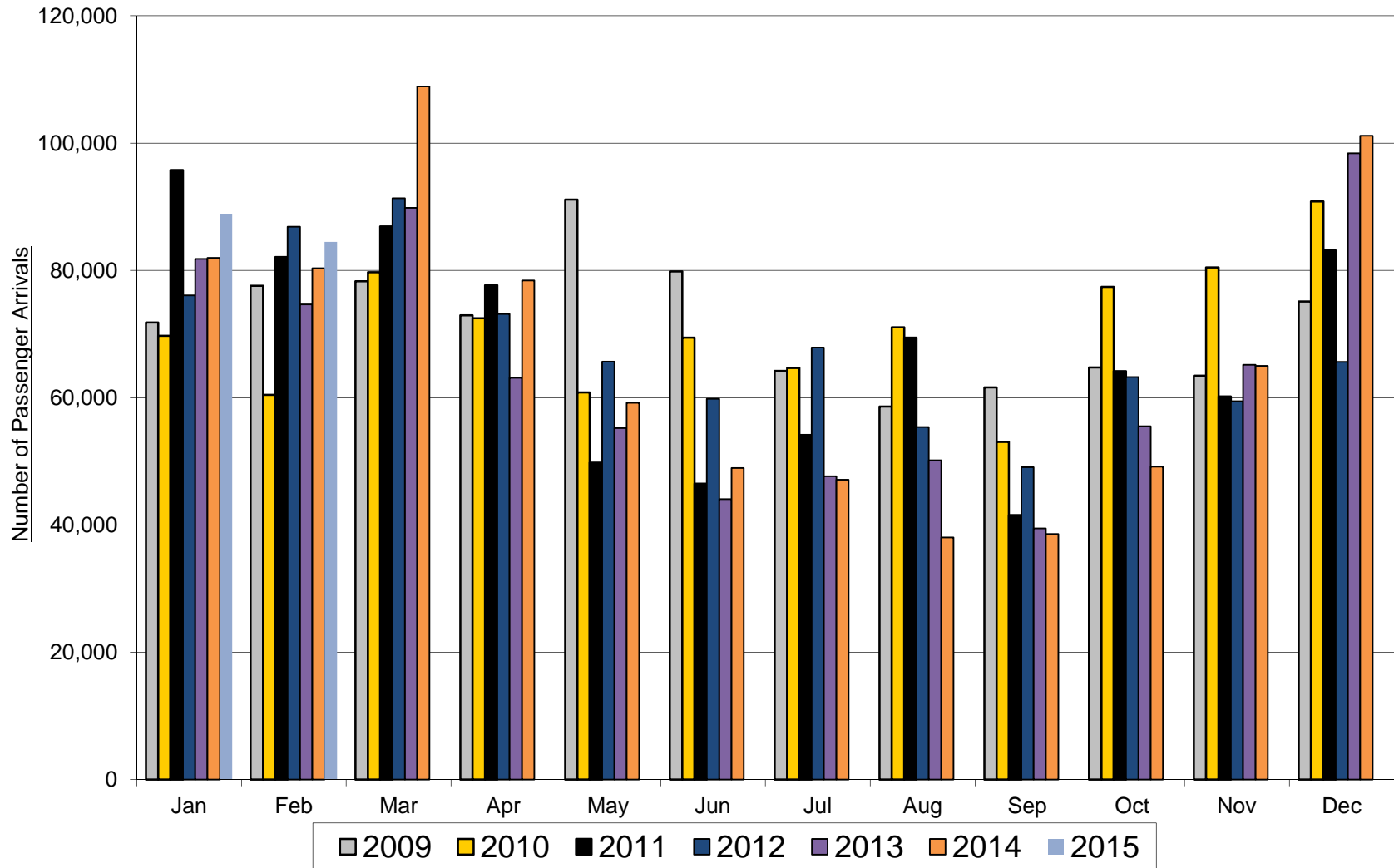
**Key West Cruise Ship Data - Port Calls**

**Year-to-Date Percentage Change from Prior Year**

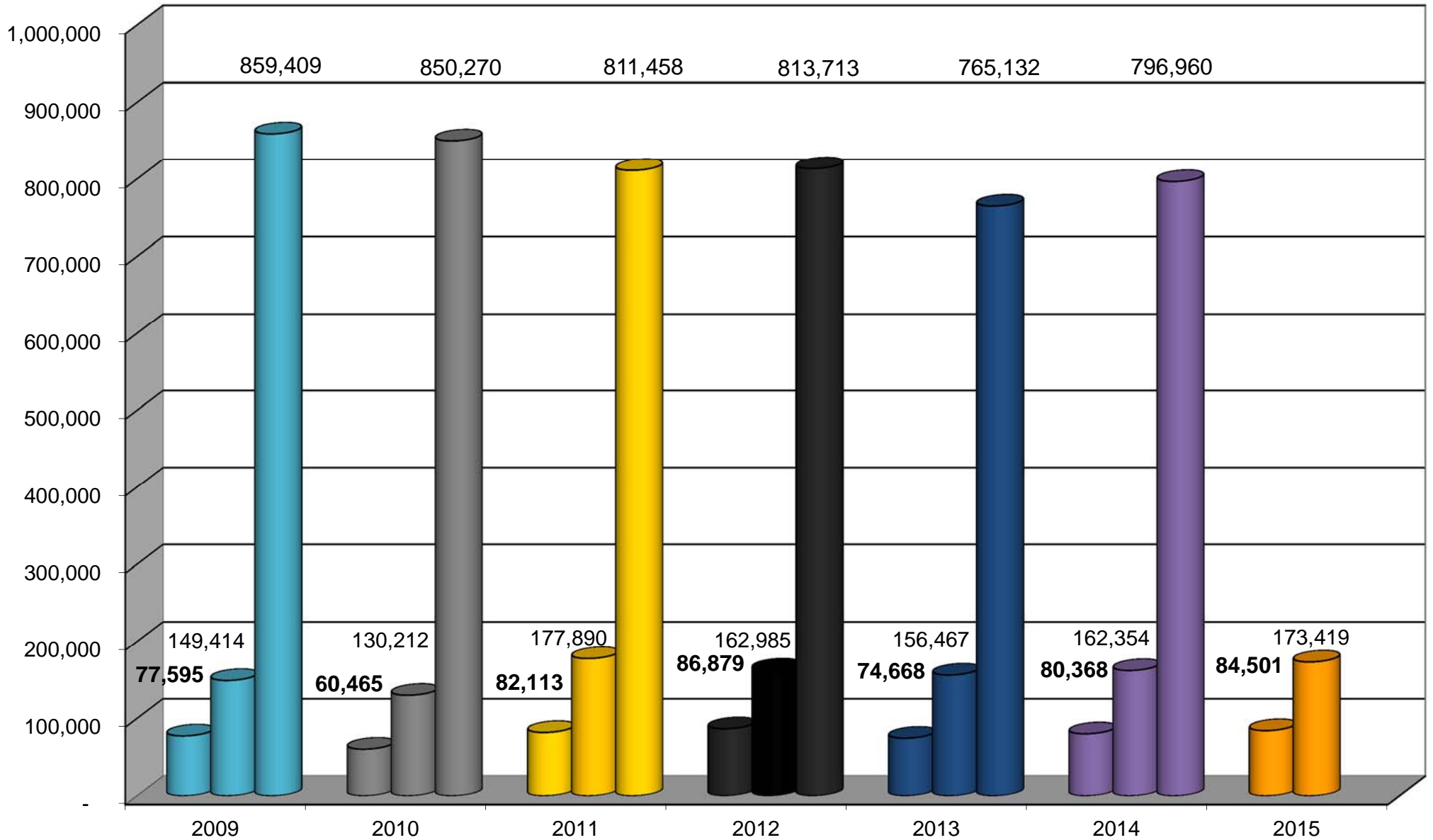
*(Source: City of Key West Port Operations Office)*

Month	2004	2005	2006	2007	2008	2009	2010	2011	2012	2013	2014	2015
Jan	-18.3%	6.1%	-3.8%	-18.0%	12.2%	-19.6%	0.0%	21.6%	-20.0%	5.6%	-2.6%	16.2%
Feb	-23.3%	12.4%	-6.0%	-16.0%	8.9%	-11.6%	-13.2%	24.2%	-8.5%	-5.3%	4.2%	10.8%
Mar	-17.8%	9.8%	-9.6%	-10.6%	-1.6%	-12.0%	-8.2%	20.8%	-6.6%	-3.5%	10.0%	
Apr	-17.8%	12.4%	-12.0%	-9.3%	-2.4%	-11.1%	-8.3%	18.2%	-9.6%	-4.3%	13.3%	
May	-14.0%	9.0%	-12.0%	-11.8%	-3.7%	0.6%	-13.8%	11.5%	-5.2%	-6.1%	14.2%	
Jun	-11.9%	6.7%	-11.5%	-13.0%	-6.3%	8.2%	-13.3%	4.4%	-2.1%	-8.6%	13.5%	
Jul	-13.1%	9.2%	-11.1%	-13.3%	-7.4%	9.9%	-12.0%	-0.5%	2.0%	-11.1%	13.0%	
Aug	-12.5%	9.3%	-13.1%	-9.8%	-12.5%	12.9%	-9.1%	-0.9%	-1.3%	-11.1%	10.4%	
Sep	-14.2%	10.3%	-13.4%	-7.2%	-13.4%	13.9%	-9.7%	-2.8%	-0.4%	-11.9%	9.8%	
Oct	-12.0%	4.8%	-9.7%	-4.8%	-16.0%	15.0%	-6.5%	-5.2%	-1.8%	-11.2%	8.0%	
Nov	-10.1%	1.5%	-7.7%	-6.7%	-14.6%	12.4%	-3.6%	-8.0%	-0.3%	-9.8%	6.7%	
Dec	-8.5%	-0.4%	-7.6%	-6.4%	-13.6%	7.3%	-1.9%	-8.0%	-1.8%	-4.9%	8.0%	

Key West Port Operations  
Key West Cruise Ship Data - Passenger Counts  
Number of Passenger Arrivals 2009-2015



Port of Key West  
Cruise Ship Passenger Arrivals  
February Month, Year-to-Date & Full Calendar Year Totals for 2009 - 2015



**Key West Ferry Data - Passenger Counts**

**Number of Passenger Arrivals (Assumed at 1/2 In/Out Volume)**

*(Source: City of Key West - Historic Seaport/Marinas Dept.)*

Month	2007	2008	2009	2010	2011	2012	2013	2014	2015
Jan	7,510	6,838	6,448	5,421	5,815	6,746	7,444	7,326	10,179
Feb	10,323	12,065	9,817	7,629	10,624	11,281	10,772	12,046	12,553
Mar	15,582	13,424	11,633	10,992	14,276	13,653	11,650	13,247	
Apr	11,038	9,129	8,140	9,111	9,289	7,330	8,722	8,896	
May	9,037	6,548	5,983	6,465	6,503	5,932	6,038	6,854	
Jun	8,049	5,974	5,289	5,491	5,028	4,334	4,395	5,293	
Jul	8,552	6,379	6,265	5,416	5,668	5,258	5,124	5,104	
Aug	6,358	4,350	4,460	4,260	3,938	3,305	4,772	5,164	
Sep	4,490	2,229	3,067	3,267	3,404	960	4,129	4,106	
Oct	5,759	4,367	4,510	5,092	5,032	2,728	5,598	5,911	
Nov	5,444	3,912	4,537	3,982	4,467	3,950	4,121	5,124	
Dec	6,951	4,772	4,652	3,793	5,175	4,648	5,585	6,903	
Total	99,090	79,985	74,801	70,919	79,219	70,125	78,348	85,973	22,732

**Key West Ferry Data - Passenger Counts**

**Percentage Change from Prior Year**

*(Source: City of Key West - Historic Seaport/Marinas Dept.)*

Month	2007	2008	2009	2010	2011	2012	2013	2014	2015
Jan	25.5%	-8.9%	-5.7%	-15.9%	7.3%	16.0%	10.3%	-1.6%	38.9%
Feb	13.0%	16.9%	-18.6%	-22.3%	39.3%	6.2%	-4.5%	11.8%	4.2%
Mar	17.8%	-13.8%	-13.3%	-5.5%	29.9%	-4.4%	-14.7%	13.7%	
Apr	6.5%	-17.3%	-10.8%	11.9%	2.0%	-21.1%	19.0%	2.0%	
May	2.5%	-27.5%	-8.6%	8.1%	0.6%	-8.8%	1.8%	13.5%	
Jun	9.6%	-25.8%	-11.5%	3.8%	-8.4%	-13.8%	1.4%	20.4%	
Jul	3.6%	-25.4%	-1.8%	-13.6%	4.7%	-7.2%	-2.6%	-0.4%	
Aug	28.7%	-31.6%	2.5%	-4.5%	-7.6%	-16.1%	44.4%	8.2%	
Sep	12.6%	-50.4%	37.6%	6.5%	4.2%	-71.8%	330.1%	-0.5%	
Oct	-3.1%	-24.2%	3.3%	12.9%	-1.2%	-45.8%	105.2%	5.6%	
Nov	0.2%	-28.2%	16.0%	-12.2%	12.2%	-11.6%	4.3%	24.3%	
Dec	34.6%	-31.3%	-2.5%	-18.5%	36.4%	-10.2%	20.2%	23.6%	
Total	10.4%	-18.4%	-6.5%	-5.2%	11.7%	-11.5%	11.7%	9.7%	21.6%

**Key West Ferry Data - Passenger Counts**

**Year-to-Date Passenger Arrivals (Assumed at 1/2 In/Out Volume)**

*(Source: City of Key West - Historic Seaport/Marinas Dept.)*

Month	2007	2008	2009	2010	2011	2012	2013	2014	2015
Jan	7,510	6,838	6,448	5,421	5,815	6,746	7,444	7,326	10,179
Feb	17,832	18,903	16,265	13,050	16,439	18,027	18,216	19,372	22,732
Mar	33,414	32,327	27,898	24,042	30,715	31,680	29,866	32,619	
Apr	44,452	41,456	36,038	33,153	40,004	39,010	38,588	41,515	
May	53,488	48,003	42,021	39,618	46,507	44,942	44,626	48,368	
Jun	61,537	53,977	47,310	45,109	51,535	49,276	49,020	53,661	
Jul	70,088	60,355	53,575	50,525	57,203	54,534	54,144	58,765	
Aug	76,446	64,705	58,035	54,785	61,141	57,839	58,916	63,929	
Sep	80,936	66,934	61,102	58,052	64,545	58,799	63,044	68,035	
Oct	86,695	71,301	65,612	63,144	69,577	61,527	68,642	73,946	
Nov	92,139	75,213	70,149	67,126	74,044	65,477	72,763	79,070	
Dec	99,090	79,985	74,801	70,919	79,219	70,125	78,348	85,973	

**Key West Ferry Data - Passenger Counts**

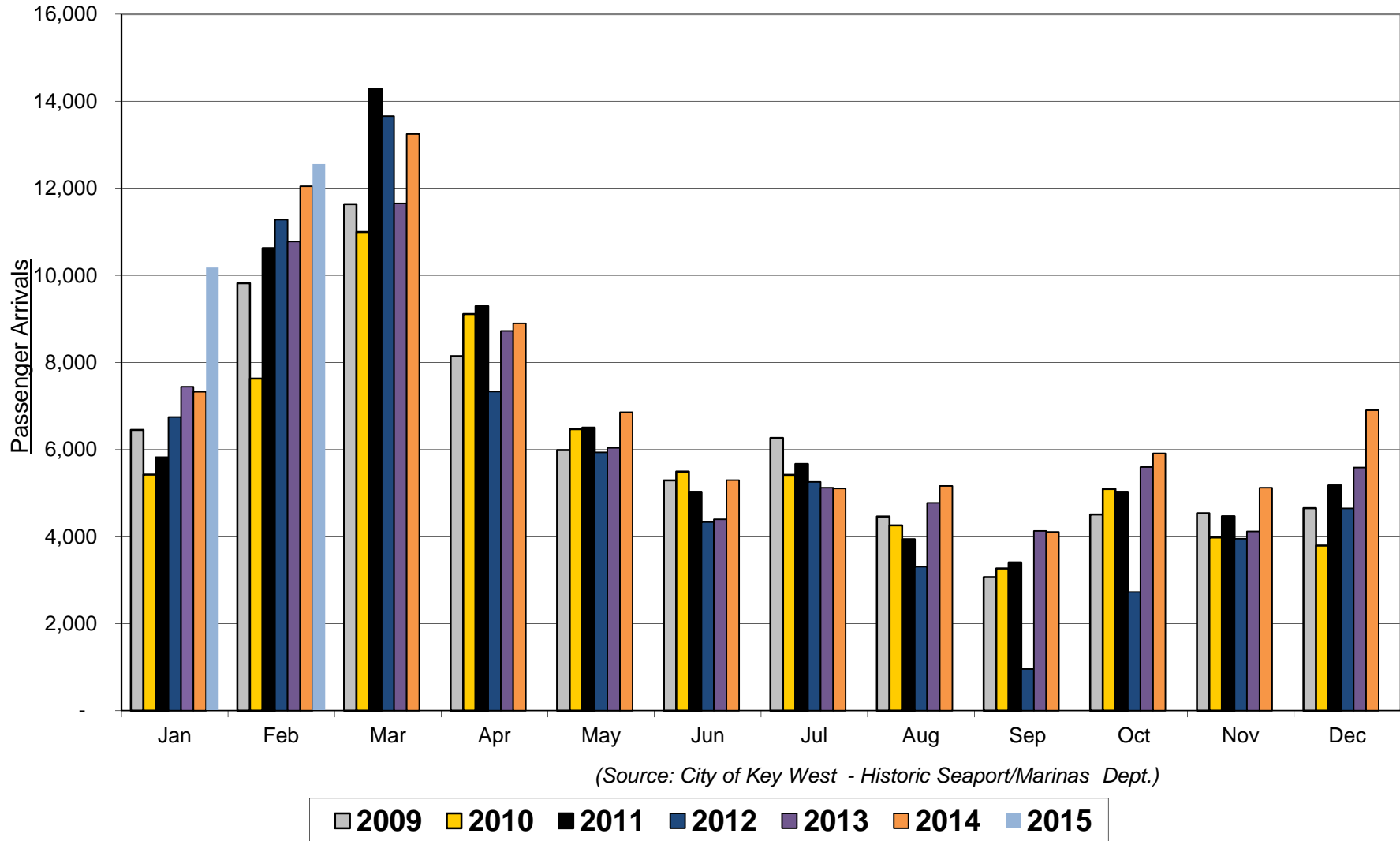
**Year-to-Date Percentage Change from Prior Year**

*(Source: City of Key West - Historic Seaport/Marinas Dept.)*

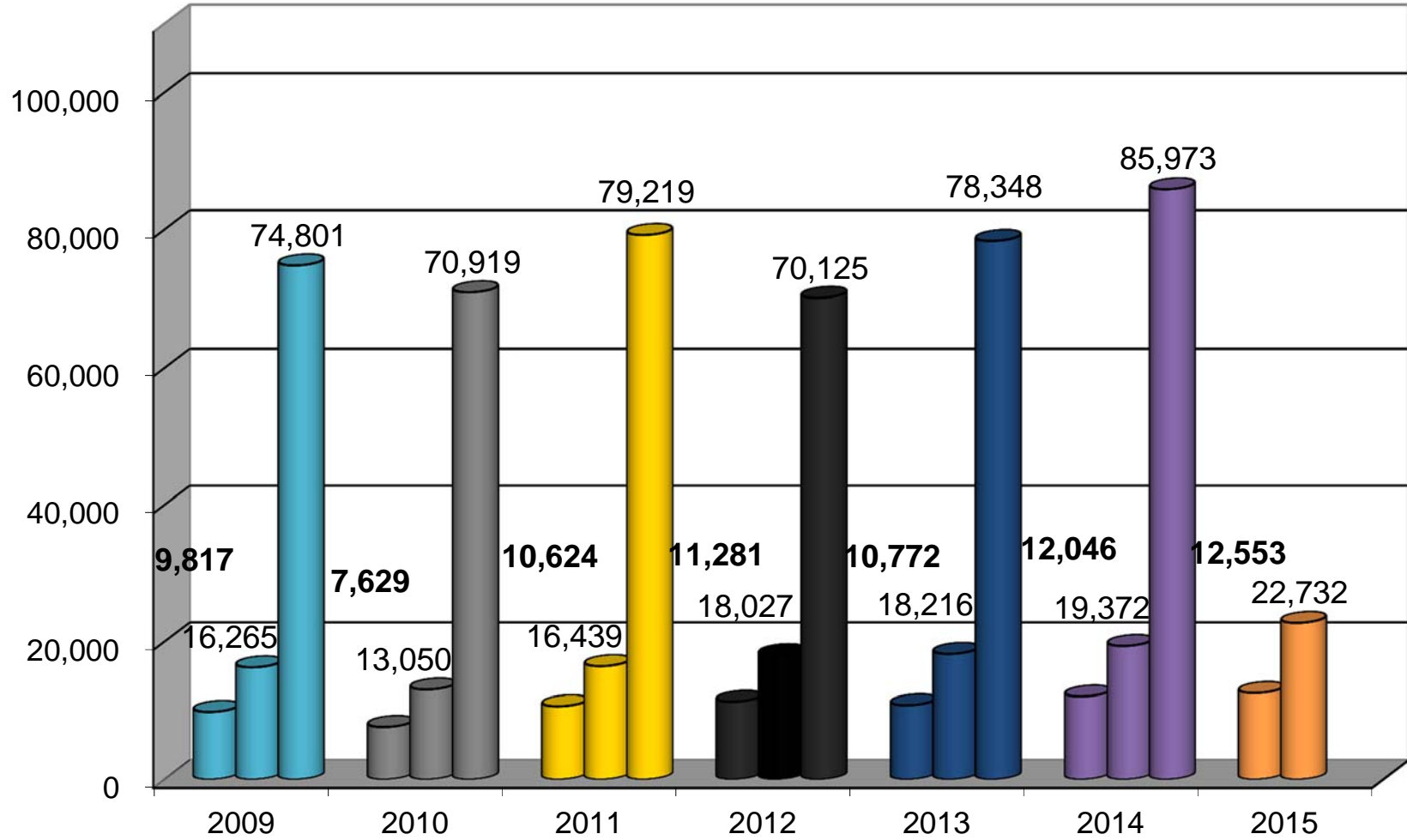
Month	2007	2008	2009	2010	2011	2012	2013	2014	2015
Jan	25.5%	-8.9%	-5.7%	-15.9%	7.3%	16.0%	10.3%	-1.6%	38.9%
Feb	17.9%	6.0%	-14.0%	-19.8%	26.0%	9.7%	1.0%	6.3%	17.3%
Mar	17.9%	-3.3%	-13.7%	-13.8%	27.8%	3.1%	-5.7%	9.2%	
Apr	14.8%	-6.7%	-13.1%	-8.0%	20.7%	-2.5%	-1.1%	7.6%	
May	12.6%	-10.3%	-12.5%	-5.7%	17.4%	-3.4%	-0.7%	8.4%	
Jun	12.2%	-12.3%	-12.4%	-4.7%	14.2%	-4.4%	-0.5%	9.5%	
Jul	11.0%	-13.9%	-11.2%	-5.7%	13.2%	-4.7%	-0.7%	8.5%	
Aug	12.3%	-15.4%	-10.3%	-5.6%	11.6%	-5.4%	1.9%	8.5%	
Sep	12.3%	-17.3%	-8.7%	-5.0%	11.2%	-8.9%	7.2%	7.9%	
Oct	11.1%	-17.8%	-8.0%	-3.8%	10.2%	-11.6%	11.6%	7.7%	
Nov	10.4%	-18.4%	-6.7%	-4.3%	10.3%	-11.6%	11.1%	8.7%	
Dec	11.8%	-19.3%	-6.5%	-5.2%	11.7%	-11.5%	11.7%	9.7%	



Key West Port Operations  
Key West Ferry Data - Passenger Counts  
Number of Passenger Arrivals 2009 - 2015



Key West Port Operations  
Ferry Passenger Arrivals  
February Month, Year-to-Date & Full Calendar Year Results 2009 - 2015



**Key West Airport Data - Passenger Counts**

**Number of Passenger Arrivals by Plane**

*(Source: Key West International Airport)*

Month	2004	2005	2006	2007	2008	2009	2010	2011	2012	2013	2014	2015
Jan	25,582	25,972	26,897	24,721	22,050	20,528	24,460	26,756	32,536	33,541	37,639	32,909
Feb	27,998	32,350	27,724	25,187	24,767	21,780	26,581	27,928	34,528	33,973	37,075	32,551
Mar	30,412	37,193	31,128	29,356	26,692	25,435	29,734	35,593	37,422	41,670	45,381	
Apr	28,372	33,918	26,676	26,116	22,645	24,184	25,910	34,901	33,133	35,119	39,496	
May	26,323	29,352	26,282	24,998	21,016	19,625	22,434	28,299	31,248	33,454	37,284	
Jun	23,171	25,470	22,536	20,254	16,724	17,928	19,658	26,308	29,294	30,985	24,859	
Jul	23,924	22,054	20,796	19,958	15,697	17,510	19,046	26,898	30,428	30,060	23,579	
Aug	19,272	19,573	15,297	17,280	12,671	14,781	18,800	24,012	25,305	28,652	21,509	
Sep	11,874	16,639	13,565	13,060	8,004	11,162	16,800	20,157	23,382	22,533	18,298	
Oct	24,026	15,394	20,176	20,126	15,243	16,776	22,959	24,261	28,809	30,377	22,835	
Nov	25,231	29,195	22,419	21,643	17,538	17,545	24,449	27,688	27,826	30,628	23,267	
Dec	25,316	26,759	22,658	21,089	19,151	22,059	27,135	31,177	33,704	38,002	28,946	
Total	291,501	313,869	276,154	263,788	222,198	229,313	277,966	333,978	367,615	388,994	360,168	65,460

**Key West Airport Data - Passenger Counts**

**Percentage Change from Prior Year**

*(Source: Key West International Airport)*

Month	2004	2005	2006	2007	2008	2009	2010	2011	2012	2013	2014	2015
Jan	11.9%	1.5%	3.6%	-8.1%	-10.8%	-6.9%	19.2%	9.4%	21.6%	3.1%	12.2%	-12.6%
Feb	2.2%	15.5%	-14.3%	-9.2%	-1.7%	-12.1%	22.0%	5.1%	23.6%	-1.6%	9.1%	-12.2%
Mar	1.0%	22.3%	-16.3%	-5.7%	-9.1%	-4.7%	16.9%	19.7%	5.1%	11.4%	8.9%	
Apr	5.4%	19.5%	-21.4%	-2.1%	-13.3%	6.8%	7.1%	34.7%	-5.1%	6.0%	12.5%	
May	4.1%	11.5%	-10.5%	-4.9%	-15.9%	-6.6%	14.3%	26.1%	10.4%	7.1%	11.4%	
Jun	5.7%	9.9%	-11.5%	-10.1%	-17.4%	7.2%	9.6%	33.8%	11.4%	5.8%	-19.8%	
Jul	5.3%	-7.8%	-5.7%	-4.0%	-21.3%	11.5%	8.8%	41.2%	13.1%	-1.2%	-21.6%	
Aug	-7.7%	1.6%	-21.8%	13.0%	-26.7%	16.7%	27.2%	27.7%	5.4%	13.2%	-24.9%	
Sep	-24.3%	40.1%	-18.5%	-3.7%	-38.7%	39.5%	50.5%	20.0%	16.0%	-3.6%	-18.8%	
Oct	-0.2%	-35.9%	31.1%	-0.2%	-24.3%	10.1%	36.9%	5.7%	18.7%	5.4%	-24.8%	
Nov	5.6%	15.7%	-23.2%	-3.5%	-19.0%	0.0%	39.4%	13.2%	0.5%	10.1%	-24.0%	
Dec	1.0%	5.7%	-15.3%	-6.9%	-9.2%	15.2%	23.0%	14.9%	8.1%	12.8%	-23.8%	
Total	1.6%	7.7%	-12.0%	-4.5%	-15.8%	3.2%	21.2%	20.2%	10.1%	5.8%	-7.4%	-12.4%

**Key West Airport Data - Passenger Counts**  
**Year-to-Date Number of Passenger Arrivals by Plane**

*(Source: Key West International Airport)*

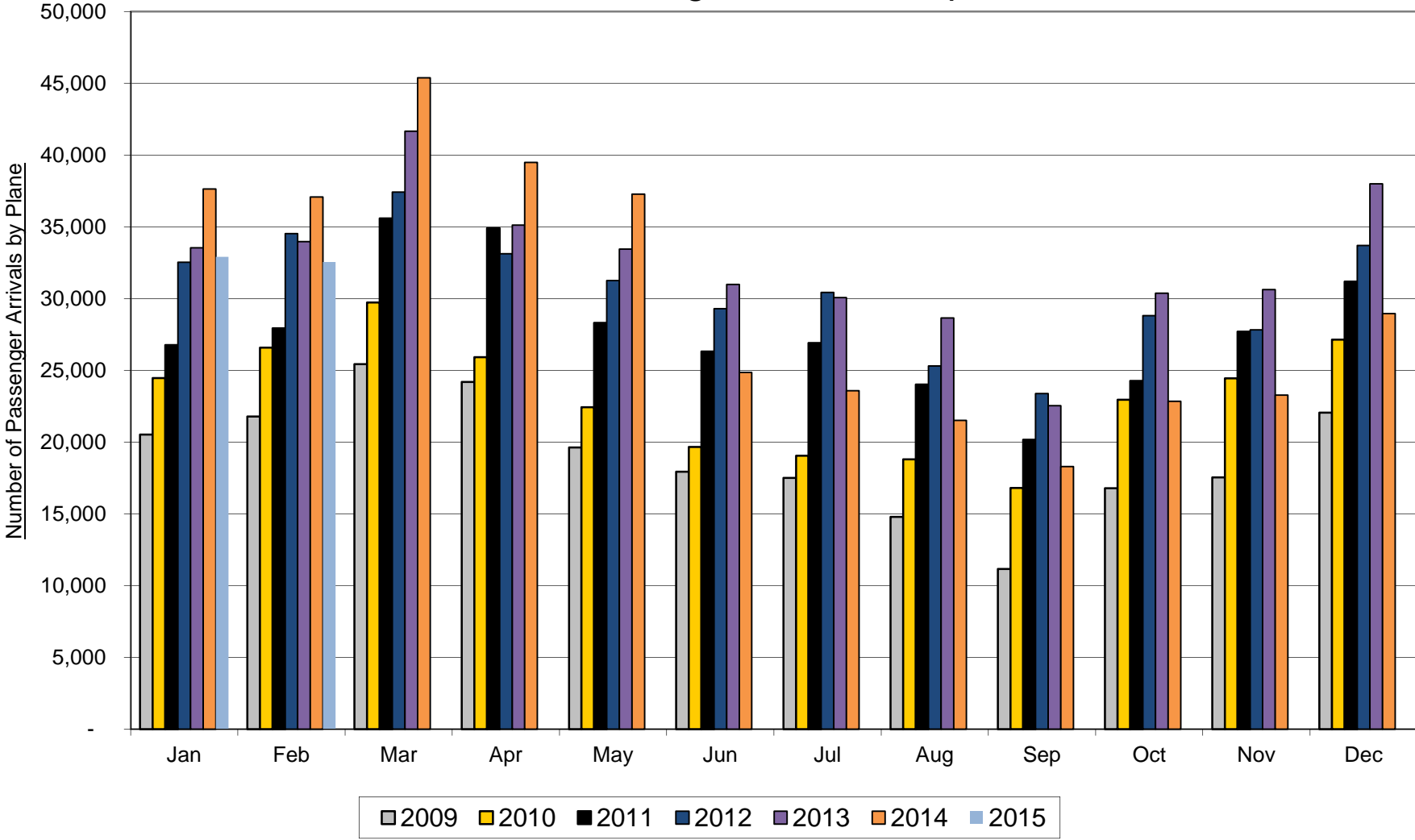
Month	2004	2005	2006	2007	2008	2009	2010	2011	2012	2013	2014	2015
Jan	25,582	25,972	26,897	24,721	22,050	20,528	24,460	26,756	32,536	33,541	37,639	32,909
Feb	53,580	58,322	54,621	49,908	46,817	42,308	51,041	54,684	67,064	67,514	74,714	65,460
Mar	83,992	95,515	85,749	79,264	73,509	67,743	80,775	90,277	104,486	109,184	120,095	
Apr	112,364	129,433	112,425	105,380	96,154	91,927	106,685	125,178	137,619	144,303	159,591	
May	138,687	158,785	138,707	130,378	117,170	111,552	129,119	153,477	168,867	177,757	196,875	
Jun	161,858	184,255	161,243	150,632	133,894	129,480	148,777	179,785	198,161	208,742	221,734	
Jul	185,782	206,309	182,039	170,590	149,591	146,990	167,823	206,683	228,589	238,802	245,313	
Aug	205,054	225,882	197,336	187,870	162,262	161,771	186,623	230,695	253,894	267,454	266,822	
Sep	216,928	242,521	210,901	200,930	170,266	172,933	203,423	250,852	277,276	289,987	285,120	
Oct	240,954	257,915	231,077	221,056	185,509	189,709	226,382	275,113	306,085	320,364	307,955	
Nov	266,185	287,110	253,496	242,699	203,047	207,254	250,831	302,801	333,911	350,992	331,222	
Dec	291,501	313,869	276,154	263,788	222,198	229,313	277,966	333,978	367,615	388,994	360,168	

**Key West Airport Data - Passenger Counts**  
**Year-to-Date Percentage Change from Prior Year**

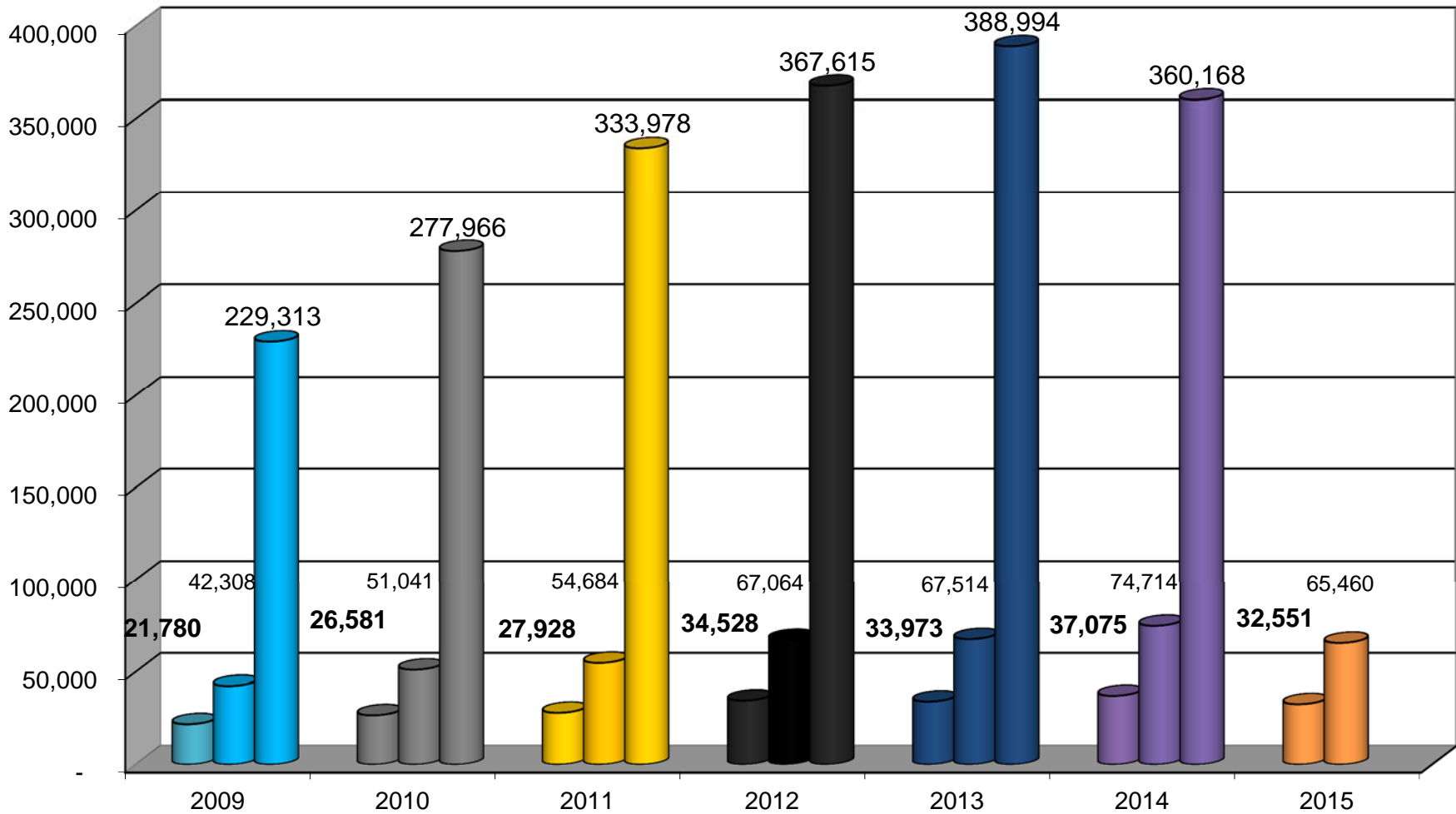
*(Source: Key West International Airport)*

Month	2004	2005	2006	2007	2008	2009	2010	2011	2012	2013	2014	2015
Jan	11.9%	1.5%	3.6%	-8.1%	-10.8%	-6.9%	19.2%	9.4%	21.6%	3.1%	12.2%	-12.6%
Feb	6.6%	8.9%	-6.3%	-8.6%	-6.2%	-9.6%	20.6%	7.1%	22.6%	0.7%	10.7%	-12.4%
Mar	4.5%	13.7%	-10.2%	-7.6%	-7.3%	-7.8%	19.2%	11.8%	15.7%	4.5%	10.0%	
Apr	4.7%	15.2%	-13.1%	-6.3%	-8.8%	-4.4%	16.1%	17.3%	9.9%	4.9%	10.6%	
May	4.6%	14.5%	-12.6%	-6.0%	-10.1%	-4.8%	15.7%	18.9%	10.0%	5.3%	10.8%	
Jun	4.8%	13.8%	-12.5%	-6.6%	-11.1%	-3.3%	14.9%	20.8%	10.2%	5.3%	6.2%	
Jul	4.8%	11.0%	-11.8%	-6.3%	-12.3%	-1.7%	14.2%	23.2%	10.6%	4.5%	2.7%	
Aug	3.5%	10.2%	-12.6%	-4.8%	-13.6%	-0.3%	15.4%	23.6%	10.1%	5.3%	-0.2%	
Sep	1.5%	11.8%	-13.0%	-4.7%	-15.3%	1.6%	17.6%	23.3%	10.5%	4.6%	-1.7%	
Oct	1.3%	7.0%	-10.4%	-4.3%	-16.1%	2.3%	19.3%	21.5%	11.3%	4.7%	-3.9%	
Nov	1.7%	7.9%	-11.7%	-4.3%	-16.3%	2.1%	21.0%	20.7%	10.3%	5.1%	-5.6%	
Dec	1.6%	7.7%	-12.0%	-4.5%	-15.8%	3.2%	21.2%	20.2%	10.1%	5.8%	-7.4%	

Key West International Airport  
Number of Passenger Arrivals per Month  
2009 - 2015 Passenger Count Comparison



Key West International Airport - Passenger Arrivals  
February Month, Year-to-Date & Full Calendar Year  
2009 - 2015



**Key West Bed Tax Data - Four Penny Collection of Bed Tax** (See Note Below)

**Bed Tax Collected**

(Source: Monroe County Tax Collector's Office)

Month	2004	2005	2006	2007	2008	2009	2010	2011	2012	2013	2014	2015
Jan	\$ 719,802	\$ 752,960	\$ 764,678	\$ 753,349	\$ 817,090	\$ 785,983	\$ 1,083,058	\$ 1,145,675	\$ 1,376,288	\$ 1,527,600	\$ 1,737,808	\$ 1,931,376
Feb	\$ 890,024	\$ 872,964	\$ 835,180	\$ 860,734	\$ 968,999	\$ 866,176	\$ 1,272,590	\$ 1,380,202	\$ 1,607,747	\$ 1,691,477	\$ 1,890,150	\$ 2,124,470
Mar	\$ 942,690	\$ 1,057,758	\$ 967,498	\$ 985,397	\$ 1,103,404	\$ 958,232	\$ 1,483,771	\$ 1,704,052	\$ 1,915,690	\$ 2,046,856	\$ 2,156,894	
Apr	\$ 737,040	\$ 748,230	\$ 779,778	\$ 796,705	\$ 816,302	\$ 808,724	\$ 1,192,659	\$ 1,405,623	\$ 1,431,807	\$ 1,496,513	\$ 1,667,606	
May	\$ 590,594	\$ 640,488	\$ 666,900	\$ 658,212	\$ 724,698	\$ 678,054	\$ 992,116	\$ 1,124,586	\$ 1,229,379	\$ 1,328,544	\$ 1,500,337	
Jun	\$ 510,515	\$ 567,089	\$ 564,056	\$ 574,856	\$ 582,443	\$ 749,657	\$ 789,439	\$ 964,425	\$ 1,088,360	\$ 1,148,483	\$ 1,215,689	
Jul	\$ 608,040	\$ 533,725	\$ 586,050	\$ 588,030	\$ 634,553	\$ 828,830	\$ 854,038	\$ 1,106,614	\$ 1,174,440	\$ 1,246,150	\$ 1,296,917	
Aug	\$ 386,955	\$ 400,262	\$ 357,942	\$ 467,980	\$ 485,705	\$ 675,302	\$ 654,353	\$ 842,738	\$ 884,273	\$ 1,054,739	\$ 1,168,184	
Sep	\$ 237,016	\$ 302,582	\$ 323,366	\$ 386,574	\$ 263,462	\$ 491,509	\$ 526,867	\$ 669,914	\$ 729,605	\$ 765,621	\$ 811,502	
Oct	\$ 530,944	\$ 252,984	\$ 472,715	\$ 534,464	\$ 542,332	\$ 758,370	\$ 817,899	\$ 987,873	\$ 1,069,721	\$ 1,182,817	\$ 1,267,607	
Nov	\$ 539,555	\$ 488,967	\$ 517,258	\$ 602,065	\$ 557,221	\$ 815,867	\$ 855,692	\$ 1,073,227	\$ 1,118,607	\$ 1,244,023	\$ 1,331,522	
Dec	\$ 578,197	\$ 602,177	\$ 586,154	\$ 686,112	\$ 675,493	\$ 974,022	\$ 970,308	\$ 1,169,583	\$ 1,255,016	\$ 1,487,795	\$ 1,646,748	
Total	\$ 7,271,371	\$ 7,220,187	\$ 7,421,576	\$ 7,894,480	\$ 8,171,702	\$ 9,390,726	\$ 11,492,790	\$ 13,574,510	\$ 14,880,932	\$ 16,220,618	\$ 17,690,965	\$ 4,055,846

(Note : Monroe County Three-Penny Bed Tax increased to Four Pennies as of June 1, 2009)

**Key West Bed Tax Data - Four Penny Collection of Bed Tax** (See Note Above)

**Percentage Change from Prior Year**

(Source: Monroe County Tax Collector's Office)

Month	2004	2005	2006	2007	2008	2009	2010	2011	2012	2013	2014	2015
Jan	13.8%	4.6%	1.6%	-1.5%	8.5%	-3.8%	37.8%	5.8%	20.1%	11.0%	13.8%	11.1%
Feb	17.7%	-1.9%	-4.3%	3.1%	12.6%	-10.6%	46.9%	8.5%	16.5%	5.2%	11.7%	12.4%
Mar	7.5%	12.2%	-8.5%	1.9%	12.0%	-13.2%	54.8%	14.8%	12.4%	6.8%	5.4%	
Apr	13.1%	1.5%	4.2%	2.2%	2.5%	-0.9%	47.5%	17.9%	1.9%	4.5%	11.4%	
May	-0.9%	8.4%	4.1%	-1.3%	10.1%	-6.4%	46.3%	13.4%	9.3%	8.1%	12.9%	
Jun	13.9%	11.1%	-0.5%	1.9%	1.3%	28.7%	5.3%	22.2%	12.9%	5.5%	5.9%	
Jul	15.1%	-12.2%	9.8%	0.3%	7.9%	30.6%	3.0%	29.6%	6.1%	6.1%	4.1%	
Aug	-17.4%	3.4%	-10.6%	30.7%	3.8%	39.0%	-3.1%	28.8%	4.9%	19.3%	10.8%	
Sep	-21.0%	27.7%	6.9%	19.5%	-31.8%	86.6%	7.2%	27.2%	8.9%	4.9%	6.0%	
Oct	1.0%	-52.4%	86.9%	13.1%	1.5%	39.8%	7.8%	20.8%	8.3%	10.6%	7.2%	
Nov	8.7%	-9.4%	5.8%	16.4%	-7.4%	46.4%	4.9%	25.4%	4.2%	11.2%	7.0%	
Dec	1.5%	4.1%	-2.7%	17.1%	-1.5%	44.2%	-0.4%	20.5%	7.3%	18.5%	10.7%	
Total	6.1%	-0.7%	2.8%	6.4%	3.5%	14.9%	22.4%	18.1%	9.6%	9.0%	9.1%	11.8%

**Key West Bed Tax Data - Four Penny Collection of Bed Tax** *(See Note Below)*

**Year-to-Date Bed Tax Collected**

*(Source: Monroe County Tax Collector's Office)*

Month	2004	2005	2006	2007	2008	2009	2010	2011	2012	2013	2014	2015
Jan	\$ 719,802	\$ 752,960	\$ 764,678	\$ 753,349	\$ 817,090	\$ 785,983	\$ 1,083,058	\$ 1,145,675	\$ 1,376,288	\$ 1,527,600	\$ 1,737,808	\$ 1,931,376
Feb	\$ 1,609,826	\$ 1,625,924	\$ 1,599,859	\$ 1,614,084	\$ 1,786,089	\$ 1,652,159	\$ 2,355,648	\$ 2,525,876	\$ 2,984,035	\$ 3,219,077	\$ 3,627,958	\$ 4,055,846
Mar	\$ 2,552,516	\$ 2,683,683	\$ 2,567,356	\$ 2,599,481	\$ 2,889,493	\$ 2,610,391	\$ 3,839,419	\$ 4,229,928	\$ 4,899,724	\$ 5,265,932	\$ 5,784,852	
Apr	\$ 3,289,555	\$ 3,431,913	\$ 3,347,134	\$ 3,396,186	\$ 3,705,795	\$ 3,419,115	\$ 5,032,079	\$ 5,635,551	\$ 6,331,532	\$ 6,762,446	\$ 7,452,458	
May	\$ 3,880,149	\$ 4,072,401	\$ 4,014,034	\$ 4,054,398	\$ 4,430,492	\$ 4,097,169	\$ 6,024,195	\$ 6,760,136	\$ 7,560,911	\$ 8,090,990	\$ 8,952,796	
Jun	\$ 4,390,664	\$ 4,639,490	\$ 4,578,091	\$ 4,629,254	\$ 5,012,935	\$ 4,846,827	\$ 6,813,633	\$ 7,724,561	\$ 8,649,271	\$ 9,239,473	\$ 10,168,484	
Jul	\$ 4,998,704	\$ 5,173,216	\$ 5,164,141	\$ 5,217,285	\$ 5,647,488	\$ 5,675,657	\$ 7,667,671	\$ 8,831,176	\$ 9,823,711	\$ 10,485,623	\$ 11,465,401	
Aug	\$ 5,385,659	\$ 5,573,477	\$ 5,522,083	\$ 5,685,265	\$ 6,133,194	\$ 6,350,959	\$ 8,322,024	\$ 9,673,914	\$ 10,707,984	\$ 11,540,362	\$ 12,633,585	
Sep	\$ 5,622,675	\$ 5,876,059	\$ 5,845,448	\$ 6,071,839	\$ 6,396,655	\$ 6,842,468	\$ 8,848,892	\$ 10,343,827	\$ 11,437,589	\$ 12,305,983	\$ 13,445,088	
Oct	\$ 6,153,619	\$ 6,129,044	\$ 6,318,164	\$ 6,606,303	\$ 6,938,988	\$ 7,600,838	\$ 9,666,790	\$ 11,331,700	\$ 12,507,310	\$ 13,488,800	\$ 14,712,695	
Nov	\$ 6,693,174	\$ 6,618,010	\$ 6,835,422	\$ 7,208,368	\$ 7,496,209	\$ 8,416,705	\$ 10,522,482	\$ 12,404,927	\$ 13,625,917	\$ 14,732,823	\$ 16,044,217	
Dec	\$ 7,271,371	\$ 7,220,187	\$ 7,421,576	\$ 7,894,480	\$ 8,171,702	\$ 9,390,726	\$ 11,492,790	\$ 13,574,510	\$ 14,880,932	\$ 16,220,618	\$ 17,690,965	

*(Note: Monroe County Three-Penny Bed Tax increased to Four Pennies as of June 1, 2009)*

**Key West Bed Tax Data - Four Penny Collection of Bed Tax** *(See Note Above)*

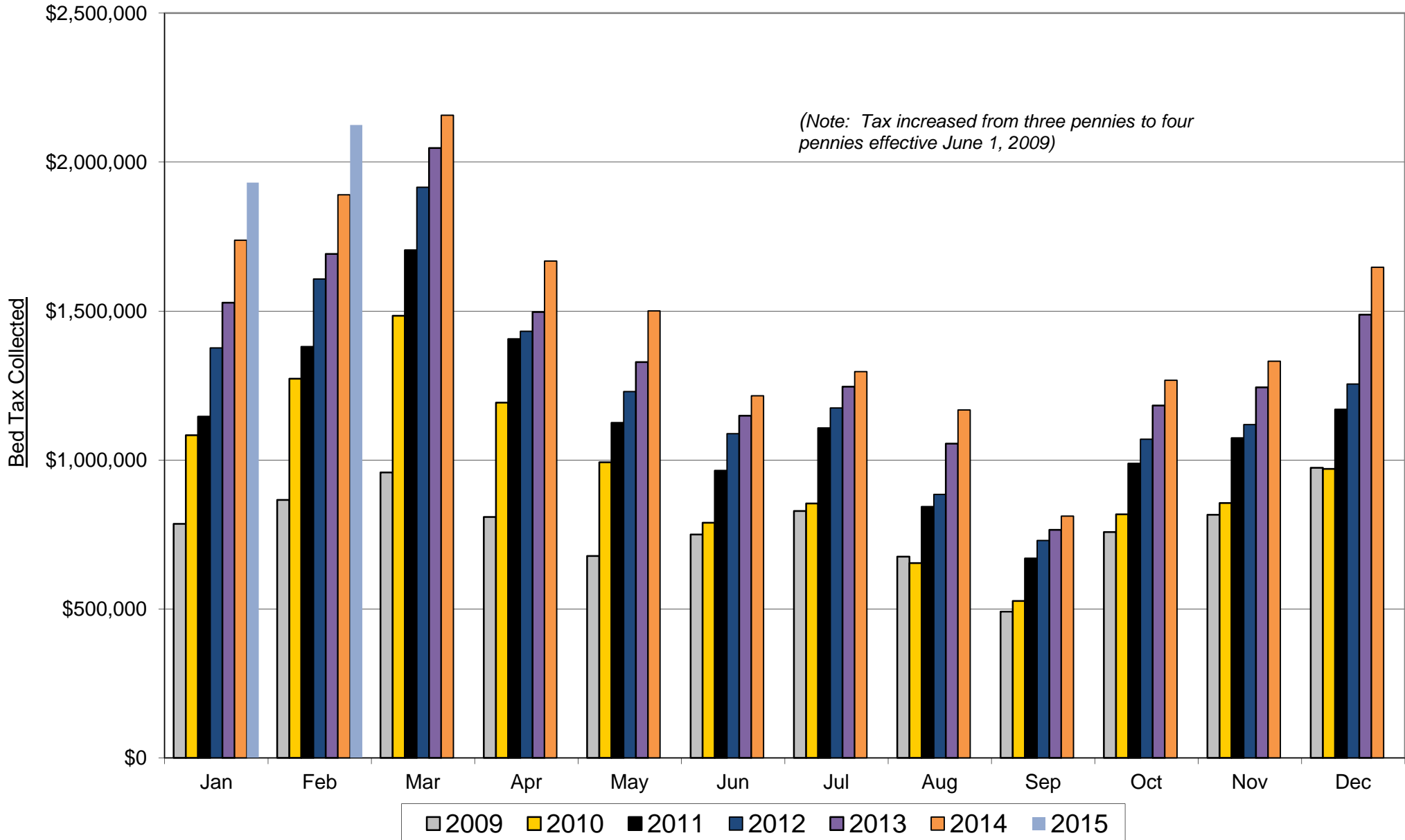
**Year-to-Date Percentage Change from Prior Year**

*(Source: Monroe County Tax Collector's Office)*

Month	2004	2005	2006	2007	2008	2009	2010	2011	2012	2013	2014	2015
Jan	13.8%	4.6%	1.6%	-1.5%	8.5%	-3.8%	37.8%	5.8%	20.1%	11.0%	13.8%	11.1%
Feb	15.9%	1.0%	-1.6%	0.9%	10.7%	-7.5%	42.6%	7.2%	18.1%	7.9%	12.7%	11.8%
Mar	12.7%	5.1%	-4.3%	1.3%	11.2%	-9.7%	47.1%	10.2%	15.8%	7.5%	9.9%	
Apr	12.8%	4.3%	-2.5%	1.5%	9.1%	-7.7%	47.2%	12.0%	12.3%	6.8%	10.2%	
May	10.4%	5.0%	-1.4%	1.0%	9.3%	-7.5%	47.0%	12.2%	11.8%	7.0%	10.7%	
Jun	10.8%	5.7%	-1.3%	1.1%	8.3%	-3.3%	40.6%	13.4%	12.0%	6.8%	10.1%	
Jul	11.3%	3.5%	-0.2%	1.0%	8.2%	0.5%	35.1%	15.2%	11.2%	6.7%	9.3%	
Aug	8.6%	3.5%	-0.9%	3.0%	7.9%	3.6%	31.0%	16.2%	10.7%	7.8%	9.5%	
Sep	6.9%	4.5%	-0.5%	3.9%	5.3%	7.0%	29.3%	16.9%	10.6%	7.6%	9.3%	
Oct	6.4%	-0.4%	3.1%	4.6%	5.0%	9.5%	27.2%	17.2%	10.4%	7.8%	9.1%	
Nov	6.6%	-1.1%	3.3%	5.5%	4.0%	12.3%	25.0%	17.9%	9.8%	8.1%	8.9%	
Dec	6.1%	-0.7%	2.8%	6.4%	3.5%	14.9%	22.4%	18.1%	9.6%	9.0%	9.1%	

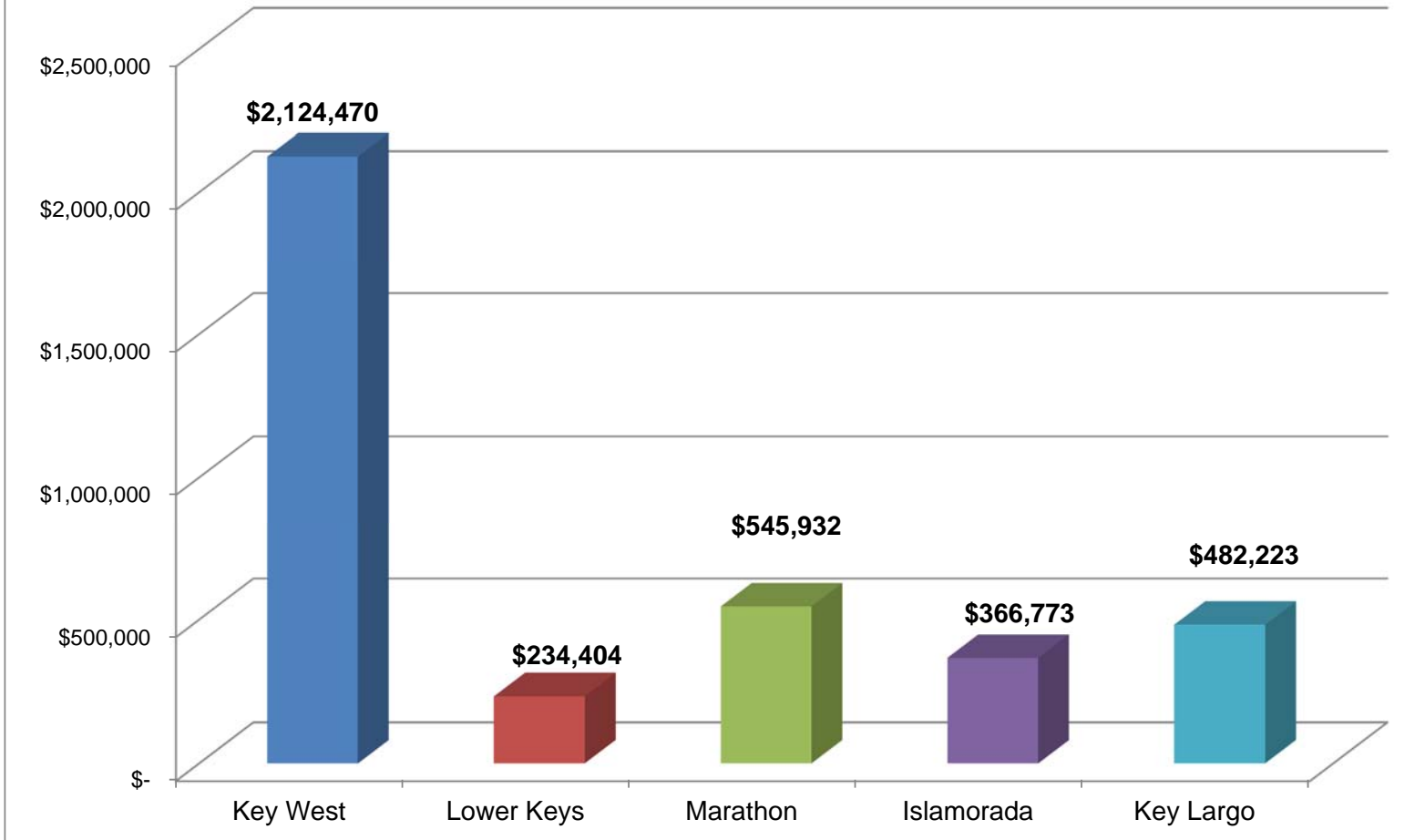


**Key West Bed Tax Data**  
Four Penny Collection of Bed Tax per Month  
Comparison of Bed Tax Collected 2009 - 2015



Source: Monroe County Tax Collector's Office

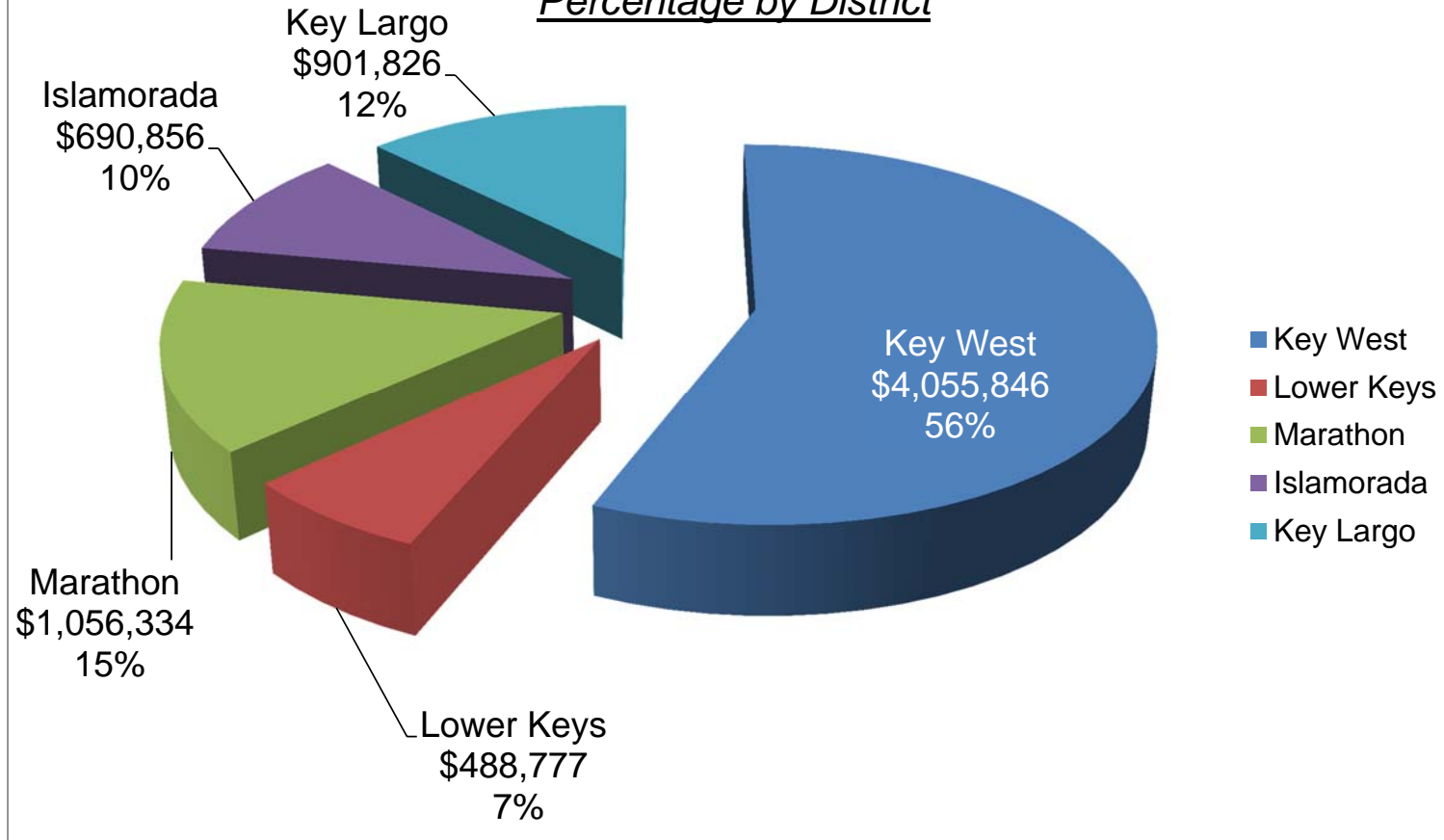
All DACs - Four Penny Bed Tax  
Collections for February 2015  
Total by District



Source: Monroe County Tax Collector

	<u>Key West</u>	<u>Lower Keys</u>	<u>Marathon</u>	<u>Islamorada</u>	<u>Key Largo</u>	<u>Total</u>
February-15	\$ 2,124,469.67	\$ 234,404.34	\$ 545,932.09	\$ 366,773.11	\$ 482,223.00	\$ 3,753,802.21

All DACs - Four Penny Bed Tax  
Collections for January - February 2015  
Percentage by District



Source: Monroe County Tax Collector

	<u>Key West</u>	<u>Lower Keys</u>	<u>Marathon</u>	<u>Islamorada</u>	<u>Key Largo</u>	<u>Total</u>
Y-T-D	\$ 4,055,845.59	\$ 488,776.74	\$ 1,056,333.71	\$ 690,856.05	\$ 901,825.94	\$ 7,193,638.03
	56.4%	6.8%	14.7%	9.6%	12.5%	100%

**Key West Labor Force Data - Not Seasonally Adjusted**

**Unemployment Rate**

*(Source: U.S. Department of Labor, Bureau of Labor Statistics)*

Month	2004	2005	2006	2007	2008	2009	2010	2011	2012	2013	2014	2015
Jan	2.8%	2.5%	2.2%	2.4%	2.7%	5.9%	6.9%	5.7%	5.1%	4.4%	3.6%	3.8%
Feb	2.6%	2.4%	2.1%	2.3%	2.7%	6.2%	6.6%	5.7%	4.9%	4.0%	3.6%	3.6%
Mar	2.7%	2.3%	2.1%	2.1%	2.8%	6.1%	6.3%	5.4%	4.5%	3.8%	3.6%	
Apr	2.5%	2.1%	1.9%	2.0%	2.9%	6.4%	6.1%	5.4%	4.4%	3.8%	3.1%	
May	2.5%	2.1%	2.0%	2.0%	3.2%	6.5%	5.5%	5.6%	4.5%	4.0%	3.3%	
Jun	2.8%	2.3%	2.1%	2.4%	3.5%	6.9%	6.1%	6.0%	4.6%	4.1%	3.3%	
Jul	2.7%	2.3%	2.2%	2.6%	3.9%	7.0%	6.4%	6.2%	4.8%	4.0%	3.7%	
Aug	2.6%	2.3%	2.3%	2.6%	4.2%	6.9%	6.6%	6.0%	4.7%	3.9%	3.6%	
Sep	2.7%	2.5%	2.5%	2.6%	4.7%	7.0%	7.1%	5.9%	4.8%	3.8%	3.5%	
Oct	2.6%	2.1%	2.2%	2.5%	4.6%	7.0%	6.7%	5.3%	4.3%	3.7%	3.5%	
Nov	2.6%	3.2%	2.2%	2.5%	4.6%	7.1%	6.5%	5.9%	4.5%	3.7%	3.4%	
Dec	2.5%	2.1%	2.0%	2.4%	5.1%	6.9%	5.9%	5.8%	4.2%	3.3%	3.1%	
Average	2.6%	2.4%	2.2%	2.4%	3.7%	6.7%	6.4%	5.8%	4.6%	3.9%	3.4%	3.7%

**Key West Labor Force Data - Not Seasonally Adjusted**

**Unemployed Persons**

*(Source: U.S. Department of Labor, Bureau of Labor Statistics)*

Month	2004	2005	2006	2007	2008	2009	2010	2011	2012	2013	2014	2015
Jan	430	367	317	334	401	859	1,106	933	846	742	619	597
Feb	401	361	308	322	409	906	1,069	936	820	689	636	570
Mar	412	339	303	304	430	900	1,026	899	758	649	633	
Apr	381	316	276	278	442	936	993	886	732	655	548	
May	384	318	297	283	486	963	897	931	758	695	589	
Jun	429	348	309	344	534	1,011	979	994	774	714	577	
Jul	411	347	319	373	600	1,028	1,045	1,016	825	686	651	
Aug	401	344	329	369	630	1,006	1,056	990	799	673	638	
Sep	400	363	352	379	688	1,011	1,146	962	797	655	606	
Oct	385	307	307	359	667	998	1,076	867	719	622	607	
Nov	394	458	305	362	675	1,022	1,042	877	743	630	574	
Dec	370	303	283	355	752	998	951	848	709	562	525	
Average	400	348	309	339	560	970	1,032	928	773	664	600	584

**Key West Labor Force Data - Not Seasonally Adjusted  
Employed Persons**

*(Source: U.S. Department of Labor, Bureau of Labor Statistics)*

Month	2004	2005	2006	2007	2008	2009	2010	2011	2012	2013	2014	2015
Jan	14,869	14,559	14,107	13,812	14,694	13,639	15,024	15,343	15,784	16,310	16,691	15,075
Feb	14,965	14,643	14,239	13,921	14,809	13,721	15,154	15,514	15,915	16,341	17,025	15,177
Mar	15,036	14,723	14,379	14,083	14,975	13,813	15,362	15,644	16,102	16,543	17,179	
Apr	14,916	14,572	14,189	13,929	14,825	13,793	15,321	15,629	16,053	16,610	17,193	
May	14,866	14,517	14,208	14,009	14,805	13,748	15,271	15,571	16,197	16,688	17,295	
Jun	14,942	14,534	14,119	14,058	14,675	13,685	15,187	15,466	16,200	16,701	16,958	
Jul	15,004	14,543	14,048	14,034	14,632	13,634	15,193	15,478	16,249	16,618	16,778	
Aug	14,788	14,485	13,860	14,058	14,366	13,616	15,057	15,446	16,098	16,708	16,902	
Sep	14,203	14,179	13,571	14,007	14,041	13,386	14,929	15,288	15,882	16,472	16,627	
Oct	14,461	14,105	13,591	13,984	13,959	13,296	14,894	15,397	15,900	16,393	16,569	
Nov	14,551	13,891	13,734	14,252	14,042	13,368	15,043	15,584	15,937	16,546	16,556	
Dec	14,607	14,092	13,853	14,463	13,981	13,451	15,208	15,748	16,062	16,723	16,622	
Average	14,767	14,404	13,992	14,051	14,484	13,596	15,137	15,509	16,032	16,554	16,866	15,126

**Key West Labor Force Data - Not Seasonally Adjusted  
Labor Force**

*(Source: U.S. Department of Labor, Bureau of Labor Statistics)*

Month	2004	2005	2006	2007	2008	2009	2010	2011	2012	2013	2014	2015
Jan	15,299	14,926	14,424	14,146	15,095	14,498	16,130	16,276	16,630	17,052	17,310	15,672
Feb	15,366	15,004	14,547	14,243	15,218	14,627	16,223	16,450	16,735	17,030	17,661	15,747
Mar	15,448	15,062	14,682	14,387	15,405	14,713	16,388	16,543	16,860	17,192	17,812	
Apr	15,297	14,888	14,465	14,207	15,267	14,729	16,314	16,515	16,785	17,265	17,741	
May	15,250	14,835	14,505	14,292	15,291	14,711	16,168	16,502	16,955	17,383	17,884	
Jun	15,371	14,882	14,428	14,402	15,209	14,696	16,166	16,460	16,974	17,415	17,535	
Jul	15,415	14,890	14,367	14,407	15,232	14,662	16,238	16,494	17,074	17,304	17,429	
Aug	15,189	14,829	14,189	14,427	14,996	14,622	16,113	16,436	16,897	17,381	17,540	
Sep	14,603	14,542	13,923	14,386	14,729	14,397	16,075	16,250	16,679	17,127	17,233	
Oct	14,846	14,412	13,898	14,343	14,626	14,294	15,970	16,264	16,619	17,015	17,176	
Nov	14,945	14,349	14,039	14,614	14,717	14,390	16,085	16,461	16,680	17,176	17,130	
Dec	14,977	14,395	14,136	14,818	14,733	14,449	16,159	16,596	16,771	17,285	17,147	
Average	15,167	14,751	14,300	14,389	15,043	14,566	16,169	16,437	16,805	17,219	17,467	15,710

**Glossary:**

**Seasonal Adjustment:** A statistical technique which eliminates the influences of weather, holidays, the opening and closing of schools, and other recurring seasonal events from economic time-series. This permits easier observation and analysis of cyclical, trend and other nonseasonal movements in the data. By eliminating seasonal fluctuations the series becomes smoother, and it is easier to compare data from month to month.

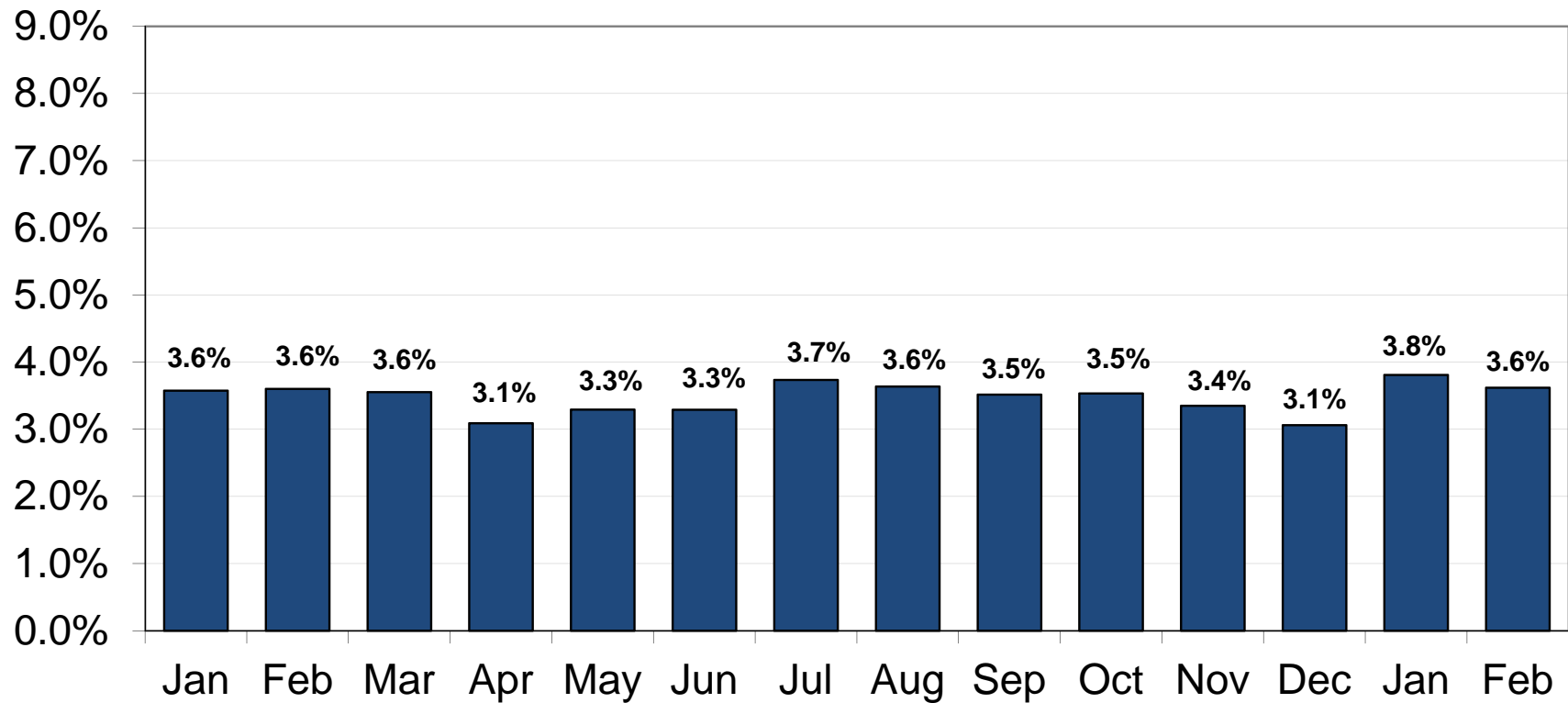
**Unemployment Rate:** The ratio of unemployed to the civilian labor force expressed as a percentage (unemployed/labor force).

**Unemployed Persons:** All persons who had no employment during the reference week, were available for work, except for temporary illness, and had made specific efforts to find employment some time during the four- week period ending with the reference week. Persons who were waiting to be recalled to a job from which they had been laid off need not have been looking for work to be classified as unemployed.

**Employed Persons:** All persons who, during the reference week (week including the twelfth day of the month), (a) did any work as paid employees, worked in their own business or profession or on their own farm, or worked 15 hours or more as unpaid workers in an enterprise operated by a member of their family, or (b) were not working but who had jobs from which they were temporarily absent. Each employed person is counted only once, even if he or she holds more than one job.

**Labor Force:** All persons in the civilian noninstitutional population classified as either employed or unemployed.

Key West Labor Force Data  
Key West Unemployment Rate  
January 2014 - February 2015



Source: U. S. Bureau of Labor Statistics

**Monroe County Labor Force Data - Not Seasonally Adjusted**

**Unemployment Rate**

*(Source: U.S. Department of Labor, Bureau of Labor Statistics)*

Month	2004	2005	2006	2007	2008	2009	2010	2011	2012	2013	2014	2015
Jan	3.2%	2.9%	2.6%	2.6%	3.0%	6.1%	7.4%	6.9%	5.6%	4.9%	3.8%	4.1%
Feb	3.0%	2.8%	2.4%	2.5%	2.9%	6.4%	7.1%	6.6%	5.4%	4.5%	3.7%	3.9%
Mar	3.1%	2.6%	2.3%	2.4%	3.1%	6.2%	6.9%	6.3%	5.1%	4.2%	3.8%	
Apr	2.9%	2.4%	2.2%	2.3%	3.0%	6.0%	6.7%	6.1%	4.9%	4.0%	3.3%	
May	2.9%	2.5%	2.3%	2.3%	3.4%	6.4%	6.6%	6.1%	5.0%	4.2%	3.6%	
Jun	3.2%	2.7%	2.5%	2.6%	3.8%	6.8%	6.9%	6.4%	5.1%	4.3%	3.5%	
Jul	3.0%	2.6%	2.7%	2.9%	4.2%	6.9%	7.1%	6.4%	5.3%	4.4%	3.9%	
Aug	3.0%	2.5%	2.7%	2.8%	4.5%	6.9%	7.4%	6.4%	5.2%	4.1%	3.9%	
Sep	3.1%	2.8%	2.6%	2.9%	4.8%	7.2%	7.5%	6.4%	5.1%	4.1%	3.7%	
Oct	3.0%	2.5%	2.4%	2.8%	5.0%	7.3%	7.2%	6.4%	4.9%	4.0%	3.6%	
Nov	3.0%	3.4%	2.5%	2.8%	5.1%	7.3%	7.4%	6.4%	4.8%	3.8%	3.5%	
Dec	2.8%	2.5%	2.2%	2.8%	5.4%	7.2%	6.8%	6.2%	4.7%	3.5%	3.2%	
Average	3.0%	2.7%	2.4%	2.6%	4.0%	6.7%	7.1%	6.4%	5.1%	4.2%	3.6%	4.0%

**Monroe County Labor Force Data - Not Seasonally Adjusted**

**Unemployed Persons**

*(Source: U.S. Department of Labor, Bureau of Labor Statistics)*

Month	2004	2005	2006	2007	2008	2009	2010	2011	2012	2013	2014	2015
Jan	1,486	1,313	1,147	1,134	1,392	2,770	3,392	3,211	2,679	2,392	1,875	1,819
Feb	1,385	1,274	1,067	1,081	1,387	2,903	3,295	3,102	2,591	2,189	1,891	1,730
Mar	1,422	1,186	1,039	1,052	1,460	2,848	3,235	2,984	2,499	2,049	1,918	
Apr	1,314	1,096	995	997	1,400	2,734	3,147	2,861	2,349	1,975	1,659	
May	1,328	1,126	1,015	1,018	1,610	2,926	3,045	2,887	2,453	2,092	1,828	
Jun	1,476	1,210	1,109	1,179	1,785	3,128	3,173	3,025	2,483	2,168	1,783	
Jul	1,416	1,186	1,180	1,271	2,004	3,157	3,305	3,028	2,618	2,185	1,973	
Aug	1,383	1,152	1,169	1,249	2,094	3,161	3,415	3,018	2,541	2,065	1,969	
Sep	1,374	1,227	1,128	1,294	2,204	3,250	3,450	2,967	2,438	2,035	1,817	
Oct	1,326	1,090	1,035	1,248	2,250	3,249	3,263	2,778	2,330	1,936	1,765	
Nov	1,357	1,499	1,072	1,272	2,320	3,299	3,433	2,794	2,320	1,886	1,700	
Dec	1,276	1,097	966	1,279	2,465	3,270	3,168	2,695	2,290	1,730	1,580	
Average	1,379	1,205	1,077	1,173	1,864	3,058	3,277	2,946	2,466	2,059	1,813	1,775



**Monroe County Labor Force Data - Not Seasonally Adjusted**

**Employed Persons**

*(Source: U.S. Department of Labor, Bureau of Labor Statistics)*

Month	2004	2005	2006	2007	2008	2009	2010	2011	2012	2013	2014	2015
Jan	44,610	44,407	43,342	42,638	45,388	42,469	42,676	43,591	45,136	46,641	47,729	42,537
Feb	44,898	44,661	43,748	42,974	45,743	42,729	43,045	44,077	45,510	46,729	48,684	42,826
Mar	45,108	44,907	44,178	43,473	46,256	43,008	43,636	44,445	46,047	47,308	49,124	
Apr	44,751	44,446	43,596	42,998	45,792	42,945	43,520	44,404	45,906	47,499	49,164	
May	44,598	44,277	43,654	43,246	45,732	42,808	43,377	44,237	46,317	47,720	49,456	
Jun	44,824	44,331	43,381	43,397	45,331	42,616	43,139	43,941	46,326	47,759	48,493	
Jul	45,012	44,356	43,161	43,323	45,196	42,457	43,155	43,974	46,465	47,521	47,980	
Aug	44,362	44,180	42,583	43,396	44,376	42,402	42,770	43,884	46,034	47,778	48,333	
Sep	42,611	43,248	41,697	43,237	43,371	41,682	42,407	43,435	45,416	47,103	47,548	
Oct	43,381	43,021	41,756	43,168	43,112	41,404	42,307	43,745	45,467	46,878	47,382	
Nov	43,652	42,367	42,198	43,994	43,374	41,629	42,729	44,276	45,574	47,316	47,344	
Dec	43,819	42,983	42,561	44,645	43,186	41,887	43,199	44,742	45,930	47,821	47,532	
Average	44,302	43,932	42,988	43,374	44,738	42,336	42,997	44,063	45,844	47,339	48,231	42,682

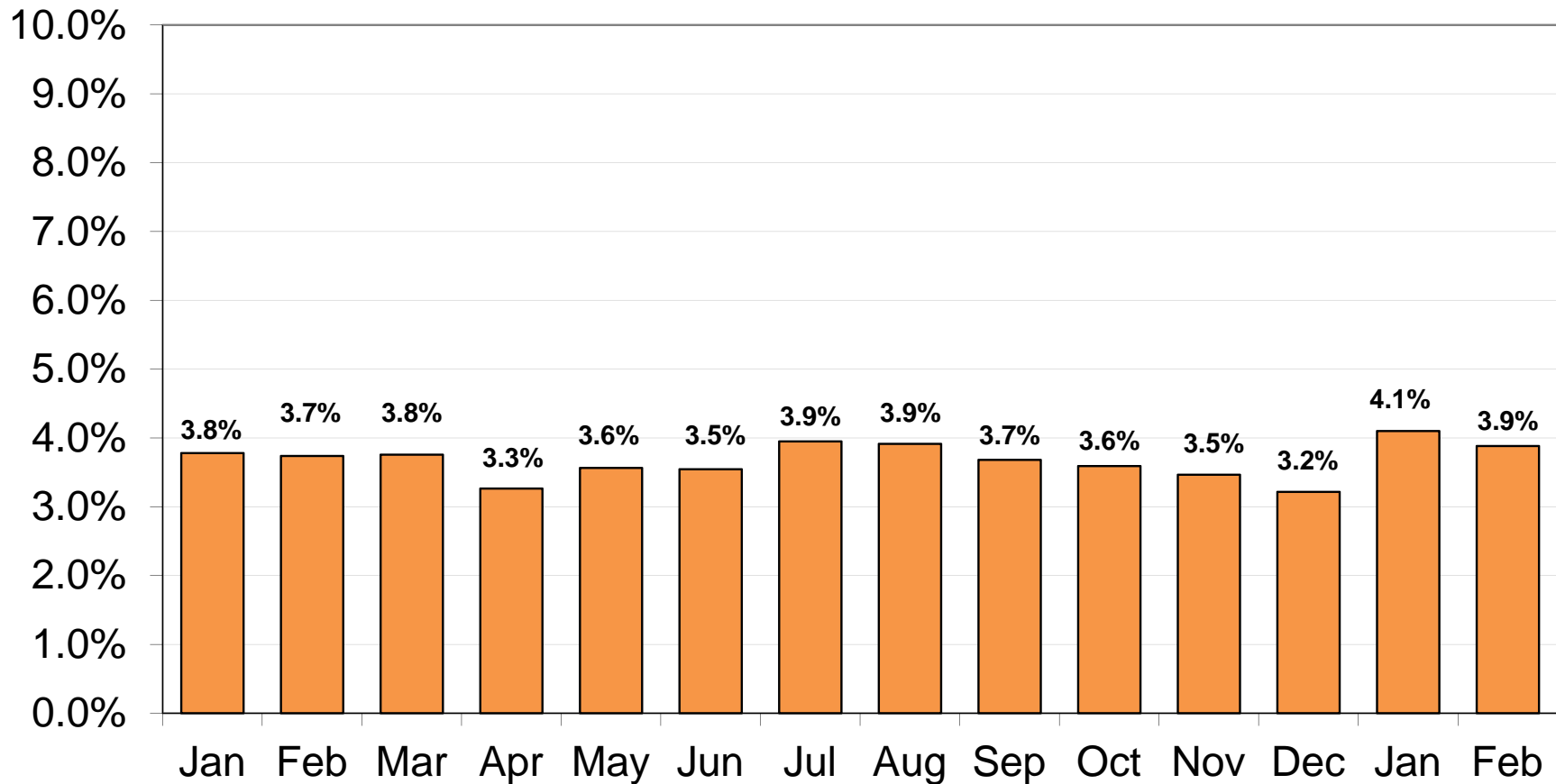
**Monroe County Labor Force Data - Not Seasonally Adjusted**

**Labor Force**

*(Source: U.S. Department of Labor, Bureau of Labor Statistics)*

Month	2004	2005	2006	2007	2008	2009	2010	2011	2012	2013	2014	2015
Jan	46,096	45,720	44,489	43,772	46,780	45,239	46,068	46,802	47,815	49,033	49,604	44,356
Feb	46,283	45,935	44,815	44,055	47,130	45,632	46,340	47,179	48,101	48,918	50,575	44,556
Mar	46,530	46,093	45,217	44,525	47,716	45,856	46,871	47,429	48,546	49,357	51,042	
Apr	46,065	45,542	44,591	43,995	47,192	45,679	46,667	47,265	48,255	49,474	50,823	
May	45,926	45,403	44,669	44,264	47,342	45,734	46,422	47,124	48,770	49,812	51,284	
Jun	46,300	45,541	44,490	44,576	47,116	45,744	46,312	46,966	48,809	49,927	50,276	
Jul	46,428	45,542	44,341	44,594	47,200	45,614	46,460	47,002	49,083	49,706	49,953	
Aug	45,745	45,332	43,752	44,645	46,470	45,563	46,185	46,902	48,575	49,843	50,302	
Sep	43,985	44,475	42,825	44,531	45,575	44,932	45,857	46,402	47,854	49,138	49,365	
Oct	44,707	44,111	42,791	44,416	45,362	44,653	45,570	46,523	47,797	48,814	49,147	
Nov	45,009	43,866	43,270	45,266	45,694	44,928	46,162	47,070	47,894	49,202	49,044	
Dec	45,095	44,080	43,527	45,924	45,651	45,157	46,367	47,437	48,220	49,551	49,112	
Average	45,681	45,137	44,065	44,547	46,602	45,394	46,273	47,008	48,310	49,398	50,044	44,456

Monroe County Labor Force Data  
Monroe County Unemployment Rate  
January 2014 - February 2015



Source: U. S. Bureau of Labor Statistics

**Florida Labor Force Data - Not Seasonally Adjusted**  
**Unemployment Rate**

*(Source: U.S. Department of Labor, Bureau of Labor Statistics)*

Month	2004	2005	2006	2007	2008	2009	2010	2011	2012	2013	2014	2015
Jan	4.9%	4.3%	3.3%	3.7%	4.9%	8.9%	11.7%	11.1%	9.4%	8.4%	6.3%	5.8%
Feb	4.6%	4.2%	3.2%	3.5%	4.8%	9.3%	11.4%	10.7%	9.2%	7.8%	6.3%	5.5%
Mar	4.7%	3.9%	3.1%	3.4%	5.0%	9.5%	11.3%	10.4%	8.8%	7.4%	6.4%	
Apr	4.4%	3.7%	3.0%	3.4%	4.9%	9.4%	10.9%	10.1%	8.4%	7.1%	5.7%	
May	4.5%	3.7%	3.1%	3.5%	5.5%	10.0%	10.9%	10.5%	8.7%	7.3%	6.1%	
Jun	5.0%	4.0%	3.5%	4.1%	6.1%	10.8%	11.3%	11.1%	9.2%	7.7%	6.3%	
Jul	5.0%	4.0%	3.7%	4.4%	6.7%	11.0%	11.6%	10.9%	9.4%	7.6%	6.6%	
Aug	4.8%	3.8%	3.7%	4.5%	7.1%	11.2%	11.7%	11.0%	9.1%	7.4%	6.7%	
Sep	4.7%	3.8%	3.6%	4.5%	7.0%	11.2%	11.4%	10.4%	8.5%	7.1%	6.1%	
Oct	4.6%	3.5%	3.3%	4.4%	7.1%	11.2%	11.1%	9.9%	8.3%	6.7%	5.8%	
Nov	4.4%	3.6%	3.4%	4.4%	7.5%	11.1%	11.4%	9.8%	8.0%	6.4%	5.6%	
Dec	4.2%	3.1%	3.2%	4.6%	7.8%	11.2%	11.0%	9.7%	8.0%	5.9%	5.4%	
Average	4.7%	3.8%	3.3%	4.0%	6.2%	10.4%	11.3%	10.5%	8.8%	7.2%	6.1%	5.7%

**Florida Labor Force Data - Not Seasonally Adjusted**  
**Unemployed Persons**

*(Source: U.S. Department of Labor, Bureau of Labor Statistics)*

Month	2004	2005	2006	2007	2008	2009	2010	2011	2012	2013	2014	2015
Jan	404,266	366,614	285,053	327,022	449,998	808,912	1,053,027	1,012,036	867,213	782,303	597,390	560,223
Feb	381,052	356,122	281,458	313,583	440,686	844,643	1,034,107	980,579	849,128	729,783	601,444	528,081
Mar	392,986	333,308	269,402	305,531	459,945	862,487	1,023,251	957,770	820,603	692,436	611,526	
Apr	369,671	319,538	262,285	304,760	445,779	852,027	997,654	932,393	784,645	668,142	543,177	
May	374,388	315,522	270,984	315,663	509,452	915,256	995,891	948,738	815,883	689,368	592,463	
Jun	421,691	348,617	312,527	373,960	567,525	982,583	1,034,254	1,004,627	864,139	734,058	604,230	
Jul	420,546	350,143	333,957	405,685	623,269	1,009,806	1,075,549	1,017,277	885,315	726,808	641,807	
Aug	406,786	335,530	333,043	407,108	657,391	1,016,692	1,083,586	996,461	857,851	705,634	651,363	
Sep	396,442	334,761	318,421	408,747	647,933	1,020,441	1,054,660	970,496	805,956	671,088	590,872	
Oct	386,530	308,592	293,210	397,106	657,992	1,011,375	1,024,589	921,815	780,600	635,322	562,515	
Nov	377,438	316,167	307,972	404,518	685,383	1,003,681	1,053,203	885,263	751,970	599,360	541,833	
Dec	355,730	272,098	286,761	420,071	719,099	1,007,398	1,007,759	866,138	752,836	558,137	514,773	
Average	390,627	329,751	296,256	365,313	572,038	944,608	1,036,461	957,799	819,678	682,703	587,783	544,152

**Florida Labor Force Data - Not Seasonally Adjusted  
Employed Persons**

*(Source: U.S. Department of Labor, Bureau of Labor Statistics)*

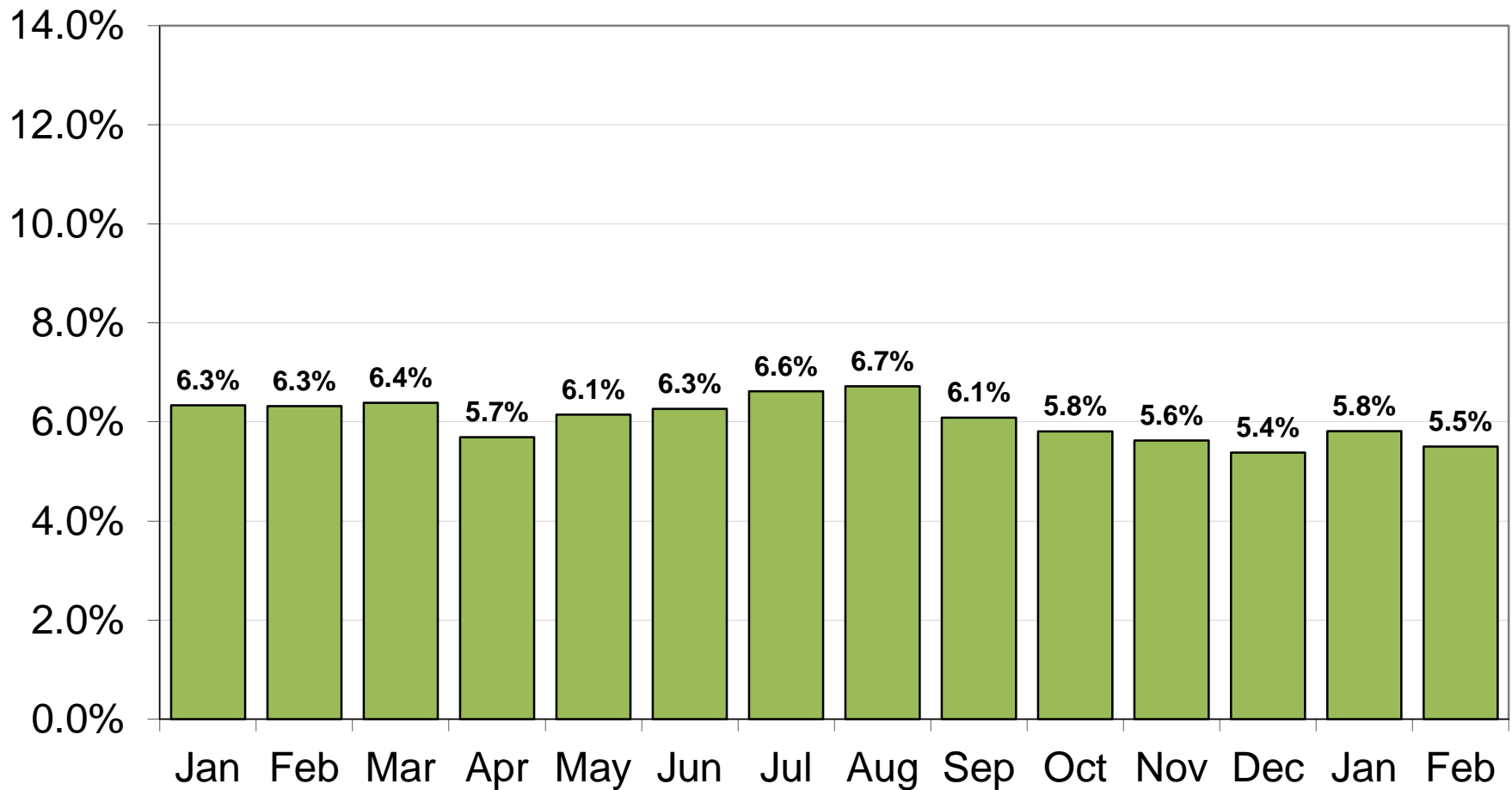
Month	2004	2005	2006	2007	2008	2009	2010	2011	2012	2013	2014	2015
Jan	7,833,400	8,070,482	8,386,874	8,631,353	8,646,784	8,260,783	7,969,443	8,145,950	8,358,127	8,580,363	8,834,402	9,073,904
Feb	7,882,282	8,118,886	8,436,842	8,658,990	8,648,287	8,233,883	8,014,921	8,188,704	8,421,363	8,634,407	8,912,405	9,063,950
Mar	7,920,923	8,173,714	8,512,539	8,728,325	8,688,368	8,216,725	8,072,299	8,259,068	8,486,966	8,681,283	8,964,159	
Apr	7,945,844	8,239,039	8,520,610	8,696,931	8,691,773	8,218,003	8,141,506	8,282,238	8,508,395	8,725,066	8,996,301	
May	7,989,094	8,306,575	8,576,995	8,731,371	8,688,351	8,201,873	8,168,958	8,330,341	8,576,956	8,791,151	9,043,215	
Jun	7,999,473	8,300,849	8,596,562	8,725,383	8,661,268	8,151,777	8,139,522	8,283,387	8,554,139	8,764,386	9,040,034	
Jul	8,055,978	8,370,839	8,618,693	8,738,106	8,671,722	8,153,737	8,163,213	8,307,508	8,562,905	8,790,179	9,052,680	
Aug	8,026,012	8,384,558	8,625,327	8,688,997	8,616,173	8,101,546	8,171,865	8,330,001	8,549,529	8,779,693	9,040,314	
Sep	8,016,476	8,406,133	8,646,002	8,713,639	8,599,967	8,061,053	8,194,653	8,376,247	8,628,482	8,819,422	9,119,877	
Oct	8,078,143	8,436,085	8,690,320	8,707,011	8,586,544	8,047,546	8,186,194	8,401,358	8,660,681	8,780,209	9,118,896	
Nov	8,108,509	8,412,860	8,679,199	8,724,204	8,506,519	8,034,208	8,159,091	8,399,688	8,620,145	8,812,079	9,089,269	
Dec	8,122,290	8,443,353	8,719,178	8,705,005	8,451,695	8,002,647	8,188,523	8,423,122	8,635,690	8,836,818	9,056,232	
Average	7,998,202	8,305,281	8,584,095	8,704,110	8,621,454	8,140,315	8,130,849	8,310,634	8,546,948	8,749,588	9,022,315	9,068,927

**Florida Labor Force Data - Not Seasonally Adjusted  
Labor Force**

*(Source: U.S. Department of Labor, Bureau of Labor Statistics)*

Month	2004	2005	2006	2007	2008	2009	2010	2011	2012	2013	2014	2015
Jan	8,237,666	8,437,096	8,671,927	8,958,375	9,096,782	9,069,695	9,022,470	9,157,986	9,225,340	9,362,666	9,431,792	9,634,127
Feb	8,263,334	8,475,008	8,718,300	8,972,573	9,088,973	9,078,526	9,049,028	9,169,283	9,270,491	9,364,190	9,513,849	9,592,031
Mar	8,313,909	8,507,022	8,781,941	9,033,856	9,148,313	9,079,212	9,095,550	9,216,838	9,307,569	9,373,719	9,575,685	
Apr	8,315,515	8,558,577	8,782,895	9,001,691	9,137,552	9,070,030	9,139,160	9,214,631	9,293,040	9,393,208	9,539,478	
May	8,363,482	8,622,097	8,847,979	9,047,034	9,197,803	9,117,129	9,164,849	9,279,079	9,392,839	9,480,519	9,635,678	
Jun	8,421,164	8,649,466	8,909,089	9,099,343	9,228,793	9,134,360	9,173,776	9,288,014	9,418,278	9,498,444	9,644,264	
Jul	8,476,524	8,720,982	8,952,650	9,143,791	9,294,991	9,163,543	9,238,762	9,324,785	9,448,220	9,516,987	9,694,487	
Aug	8,432,798	8,720,088	8,958,370	9,096,105	9,273,564	9,118,238	9,255,451	9,326,462	9,407,380	9,485,327	9,691,677	
Sep	8,412,918	8,740,894	8,964,423	9,122,386	9,247,900	9,081,494	9,249,313	9,346,743	9,434,438	9,490,510	9,710,749	
Oct	8,464,673	8,744,677	8,983,530	9,104,117	9,244,536	9,058,921	9,210,783	9,323,173	9,441,281	9,415,531	9,681,411	
Nov	8,485,947	8,729,027	8,987,171	9,128,722	9,191,902	9,037,889	9,212,294	9,284,951	9,372,115	9,411,439	9,631,102	
Dec	8,478,020	8,715,451	9,005,939	9,125,076	9,170,794	9,010,045	9,196,282	9,289,260	9,388,526	9,394,955	9,571,005	
Average	8,388,829	8,635,032	8,880,351	9,069,422	9,193,492	9,084,924	9,167,310	9,268,434	9,366,626	9,432,291	9,610,098	9,613,079

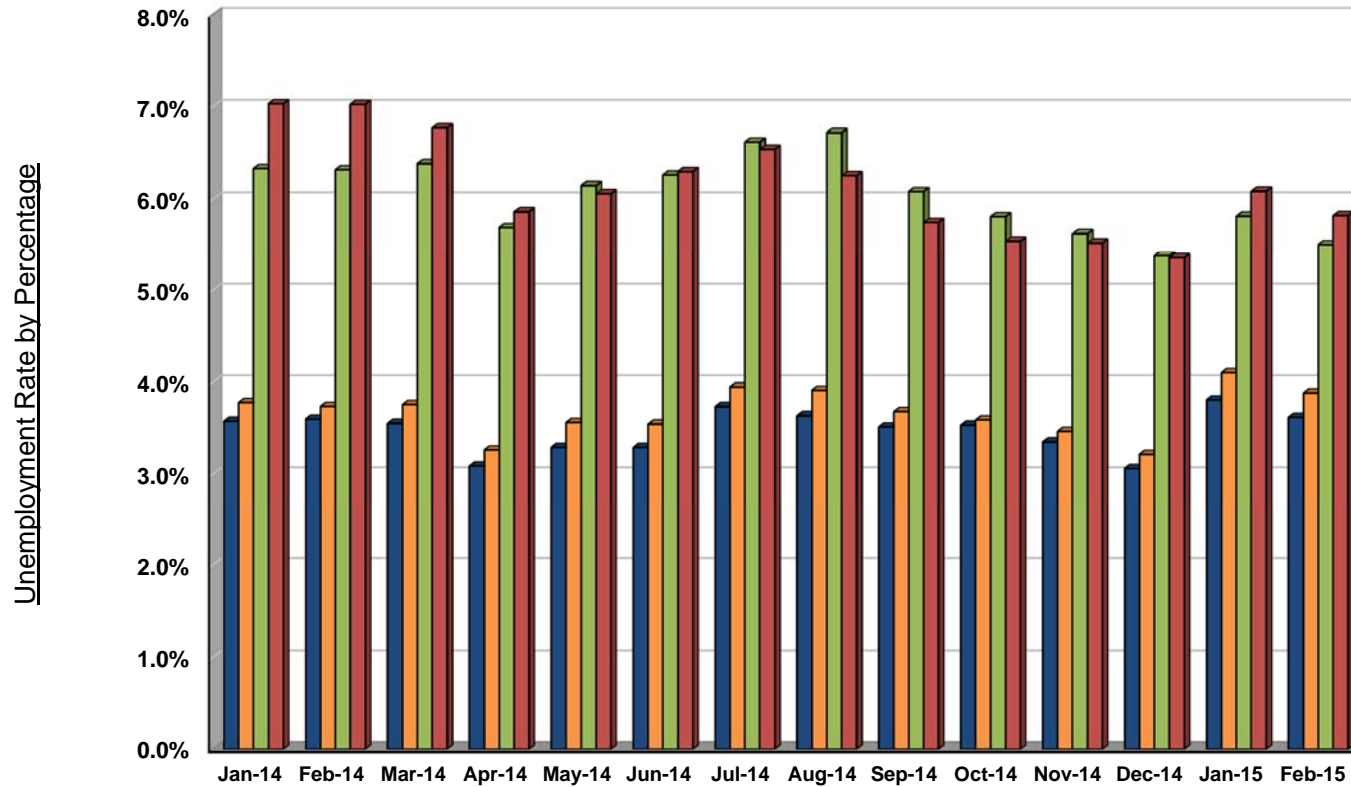
Florida Labor Force Data  
Florida Unemployment Rate  
January 2014 - February 2015



Source: U. S. Bureau of Labor Statistics

Source: US Bureau of Labor Statistics

Comparative Unemployment Rates  
The City of Key West, Monroe County, the State of Florida, and the United States of America  
January 2014 - February 2015 Unemployment Rate



	Jan-14	Feb-14	Mar-14	Apr-14	May-14	Jun-14	Jul-14	Aug-14	Sep-14	Oct-14	Nov-14	Dec-14	Jan-15	Feb-15
■ Key West	3.6%	3.6%	3.6%	3.1%	3.3%	3.3%	3.7%	3.6%	3.5%	3.5%	3.4%	3.1%	3.8%	3.6%
■ Monroe County	3.8%	3.7%	3.8%	3.3%	3.6%	3.5%	3.9%	3.9%	3.7%	3.6%	3.5%	3.2%	4.1%	3.9%
■ Florida	6.3%	6.3%	6.4%	5.7%	6.1%	6.3%	6.6%	6.7%	6.1%	5.8%	5.6%	5.4%	5.8%	5.5%
■ United States	7.0%	7.0%	6.8%	5.9%	6.1%	6.3%	6.5%	6.3%	5.7%	5.5%	5.5%	5.4%	6.1%	5.8%

**Monroe County Sales Tax Data**

**Tourism & Recreation Taxable Sales**

*(Source: Florida Department of Revenue, Florida Sales Tax Receipts)*

Month	2004	2005	2006	2007	2008	2009	2010	2011	2012	2013	2014	2015
Jan	\$ 86,188,387	\$ 90,602,540	\$ 88,732,397	\$ 89,070,267	\$ 93,481,600	\$ 88,325,467	\$ 91,377,441	\$ 93,247,402	\$ 110,159,410	\$ 111,658,057	\$ 144,154,923	\$ 151,565,527
Feb	\$ 96,283,361	\$ 101,062,409	\$ 99,813,589	\$ 101,421,323	\$ 104,137,898	\$ 102,998,205	\$ 97,631,810	\$ 103,533,798	\$ 122,561,677	\$ 140,726,946	\$ 150,102,691	\$ 167,483,951
Mar	\$ 118,426,402	\$ 126,272,456	\$ 114,721,661	\$ 119,870,977	\$ 125,334,875	\$ 105,177,926	\$ 114,102,961	\$ 124,406,400	\$ 137,425,618	\$ 144,390,743	\$ 158,176,948	
Apr	\$ 122,584,502	\$ 145,976,807	\$ 146,654,078	\$ 138,911,818	\$ 143,823,193	\$ 123,066,133	\$ 132,043,850	\$ 150,219,424	\$ 163,268,828	\$ 184,454,771	\$ 185,870,523	
May	\$ 111,496,872	\$ 112,533,535	\$ 117,184,011	\$ 120,116,643	\$ 112,291,415	\$ 110,198,426	\$ 114,428,296	\$ 132,687,376	\$ 134,793,289	\$ 136,181,975	\$ 152,251,994	
Jun	\$ 89,329,465	\$ 98,689,557	\$ 102,951,268	\$ 100,569,588	\$ 103,246,977	\$ 93,689,281	\$ 100,029,219	\$ 109,746,320	\$ 116,685,658	\$ 120,616,483	\$ 135,430,503	
Jul	\$ 88,757,581	\$ 99,752,751	\$ 92,209,009	\$ 96,897,636	\$ 92,554,019	\$ 85,474,653	\$ 87,826,365	\$ 101,954,088	\$ 110,397,361	\$ 116,543,451	\$ 124,454,760	
Aug	\$ 102,483,733	\$ 94,526,187	\$ 95,423,684	\$ 100,003,552	\$ 96,683,847	\$ 94,833,984	\$ 98,512,180	\$ 115,908,565	\$ 121,069,353	\$ 128,469,688	\$ 133,133,461	
Sep	\$ 63,529,263	\$ 67,624,280	\$ 63,933,544	\$ 78,897,482	\$ 77,580,386	\$ 75,838,307	\$ 74,314,689	\$ 89,282,756	\$ 91,980,902	\$ 108,630,213	\$ 119,635,156	
Oct	\$ 40,942,018	\$ 48,879,203	\$ 55,765,410	\$ 59,088,680	\$ 43,139,157	\$ 51,969,300	\$ 55,079,872	\$ 66,880,920	\$ 70,851,645	\$ 74,762,930	\$ 79,710,265	
Nov	\$ 84,577,180	\$ 60,021,519	\$ 80,401,809	\$ 86,252,088	\$ 82,784,311	\$ 86,100,025	\$ 92,517,786	\$ 104,616,523	\$ 112,928,181	\$ 119,246,106	\$ 132,248,757	
Dec	\$ 81,164,224	\$ 75,328,905	\$ 78,435,131	\$ 83,380,761	\$ 77,226,132	\$ 78,161,388	\$ 81,793,228	\$ 97,673,157	\$ 97,007,075	\$ 111,478,544	\$ 120,279,044	
<b>Total</b>	<b>\$ 1,085,762,988</b>	<b>\$ 1,111,270,149</b>	<b>\$ 1,136,225,591</b>	<b>\$ 1,174,480,815</b>	<b>\$ 1,152,283,810</b>	<b>\$ 1,095,833,095</b>	<b>\$ 1,139,657,697</b>	<b>\$ 1,290,156,729</b>	<b>\$ 1,389,128,997</b>	<b>\$ 1,497,159,908</b>	<b>\$ 1,635,449,025</b>	<b>\$ 319,049,479</b>

**Monroe County Sales Tax Data**

**Retail Taxable Sales (Incl Tourism & Recreation)**

*(Source: Florida Department of Revenue, Florida Sales Tax Receipts)*

Month	2004	2005	2006	2007	2008	2009	2010	2011	2012	2013	2014	2015
Jan	\$ 168,124,834	\$ 181,129,655	\$ 192,341,922	\$ 178,477,409	\$ 183,697,026	\$ 163,116,423	\$ 167,493,102	\$ 172,324,117	\$ 200,967,962	\$ 196,426,832	\$ 238,300,309	\$ 251,515,137
Feb	\$ 163,690,632	\$ 179,796,387	\$ 182,218,039	\$ 180,214,798	\$ 179,264,484	\$ 168,612,164	\$ 161,398,661	\$ 172,241,952	\$ 199,479,588	\$ 220,750,053	\$ 233,163,800	\$ 256,023,500
Mar	\$ 194,384,793	\$ 211,926,097	\$ 199,807,548	\$ 204,504,585	\$ 208,531,156	\$ 174,302,438	\$ 183,792,961	\$ 200,224,952	\$ 219,568,125	\$ 228,670,571	\$ 248,086,618	
Apr	\$ 212,552,030	\$ 246,916,600	\$ 248,595,949	\$ 238,829,078	\$ 232,079,792	\$ 202,399,934	\$ 210,386,264	\$ 238,969,628	\$ 260,999,460	\$ 281,842,892	\$ 292,327,196	
May	\$ 191,497,800	\$ 194,260,221	\$ 206,701,764	\$ 205,343,812	\$ 191,644,936	\$ 182,340,782	\$ 187,826,006	\$ 214,848,419	\$ 218,592,889	\$ 220,094,460	\$ 243,810,345	
Jun	\$ 168,472,661	\$ 180,968,173	\$ 187,619,672	\$ 182,991,341	\$ 177,643,137	\$ 166,542,197	\$ 166,300,948	\$ 183,539,279	\$ 197,156,695	\$ 199,315,516	\$ 219,473,658	
Jul	\$ 168,640,111	\$ 172,063,972	\$ 179,460,673	\$ 177,408,214	\$ 167,204,435	\$ 158,346,312	\$ 158,738,146	\$ 179,379,039	\$ 194,786,756	\$ 204,167,878	\$ 217,804,114	
Aug	\$ 180,816,799	\$ 175,595,870	\$ 175,686,948	\$ 181,092,156	\$ 170,547,637	\$ 165,120,090	\$ 168,272,894	\$ 192,789,074	\$ 202,129,699	\$ 210,914,282	\$ 220,645,282	
Sep	\$ 126,266,881	\$ 137,577,851	\$ 132,540,408	\$ 151,574,044	\$ 141,845,172	\$ 138,121,481	\$ 135,113,954	\$ 157,733,183	\$ 164,423,354	\$ 185,589,210	\$ 202,416,725	
Oct	\$ 93,682,988	\$ 110,464,156	\$ 122,229,941	\$ 119,571,117	\$ 97,636,919	\$ 106,357,066	\$ 109,518,017	\$ 129,584,647	\$ 135,651,485	\$ 141,404,277	\$ 149,693,304	
Nov	\$ 155,886,777	\$ 120,775,642	\$ 147,021,271	\$ 151,634,240	\$ 138,835,782	\$ 143,115,659	\$ 149,519,178	\$ 165,164,063	\$ 181,119,854	\$ 192,237,593	\$ 204,042,117	
Dec	\$ 151,107,433	\$ 177,312,656	\$ 151,929,764	\$ 155,048,365	\$ 139,541,068	\$ 140,550,180	\$ 144,512,748	\$ 166,300,084	\$ 169,901,153	\$ 184,081,585	\$ 198,521,883	
<b>Total</b>	<b>\$ 1,975,123,739</b>	<b>\$ 2,088,787,280</b>	<b>\$ 2,126,153,899</b>	<b>\$ 2,126,689,159</b>	<b>\$ 2,028,471,544</b>	<b>\$ 1,908,924,726</b>	<b>\$ 1,942,872,879</b>	<b>\$ 2,173,098,438</b>	<b>\$ 2,344,777,020</b>	<b>\$ 2,465,495,147</b>	<b>\$ 2,668,285,351</b>	<b>\$ 507,538,636</b>

**Monroe County Sales Tax Data**

**Total Monroe County Taxable Sales (Incl Retail and Commercial)**

*(Source: Florida Department of Revenue, Florida Sales Tax Receipts)*

Month	2004	2005	2006	2007	2008	2009	2010	2011	2012	2013	2014	2015
Jan	\$ 202,504,651	\$ 218,533,774	\$ 228,962,177	\$ 217,573,588	\$ 219,148,805	\$ 193,448,969	\$ 198,350,155	\$ 205,027,113	\$ 234,800,304	\$ 229,993,883	\$ 277,717,362	\$ 293,460,025
Feb	\$ 194,206,953	\$ 210,528,702	\$ 222,799,477	\$ 218,808,045	\$ 215,471,199	\$ 198,942,317	\$ 192,600,187	\$ 206,157,399	\$ 233,741,192	\$ 258,101,180	\$ 273,911,127	\$ 299,724,190
Mar	\$ 225,650,642	\$ 243,582,312	\$ 240,583,151	\$ 240,823,102	\$ 243,608,817	\$ 206,034,518	\$ 215,088,661	\$ 233,795,492	\$ 254,622,681	\$ 264,007,531	\$ 287,675,445	
Apr	\$ 245,937,941	\$ 281,922,316	\$ 283,391,590	\$ 278,889,214	\$ 270,964,979	\$ 235,885,554	\$ 246,051,947	\$ 277,209,526	\$ 298,107,902	\$ 321,827,763	\$ 335,334,316	
May	\$ 222,013,930	\$ 227,151,571	\$ 246,658,295	\$ 244,759,783	\$ 227,844,382	\$ 214,950,444	\$ 221,427,757	\$ 250,516,856	\$ 254,364,222	\$ 260,222,368	\$ 285,444,507	
Jun	\$ 197,958,411	\$ 215,620,617	\$ 229,063,429	\$ 219,853,600	\$ 212,233,930	\$ 195,978,522	\$ 198,346,528	\$ 217,509,797	\$ 231,161,069	\$ 235,921,529	\$ 259,285,899	
Jul	\$ 200,848,106	\$ 203,555,584	\$ 219,411,245	\$ 213,111,488	\$ 200,791,133	\$ 189,031,574	\$ 189,879,129	\$ 212,505,861	\$ 228,482,253	\$ 239,760,474	\$ 256,827,561	
Aug	\$ 209,926,691	\$ 206,419,366	\$ 212,394,619	\$ 217,735,667	\$ 205,826,293	\$ 196,656,647	\$ 198,983,485	\$ 225,796,474	\$ 235,418,578	\$ 247,069,349	\$ 266,851,399	
Sep	\$ 153,147,123	\$ 168,740,188	\$ 167,877,665	\$ 186,432,457	\$ 171,196,170	\$ 166,148,780	\$ 163,885,965	\$ 187,724,382	\$ 195,510,295	\$ 219,750,367	\$ 239,983,437	
Oct	\$ 120,545,464	\$ 138,112,978	\$ 159,790,021	\$ 150,927,430	\$ 126,194,543	\$ 133,474,490	\$ 137,746,419	\$ 159,851,286	\$ 163,346,676	\$ 174,620,953	\$ 183,884,657	
Nov	\$ 184,717,485	\$ 150,996,183	\$ 184,366,655	\$ 184,691,156	\$ 169,070,322	\$ 172,947,998	\$ 178,774,698	\$ 195,259,804	\$ 212,879,189	\$ 228,245,529	\$ 242,008,296	
Dec	\$ 180,545,880	\$ 212,942,315	\$ 187,453,225	\$ 188,038,845	\$ 168,041,591	\$ 168,856,149	\$ 175,698,764	\$ 199,324,515	\$ 201,784,164	\$ 221,299,833	\$ 235,114,071	
<b>Total</b>	<b>\$ 2,338,003,277</b>	<b>\$ 2,478,105,906</b>	<b>\$ 2,582,751,549</b>	<b>\$ 2,561,644,375</b>	<b>\$ 2,430,392,164</b>	<b>\$ 2,272,355,962</b>	<b>\$ 2,316,833,695</b>	<b>\$ 2,570,678,506</b>	<b>\$ 2,744,218,525</b>	<b>\$ 2,900,820,760</b>	<b>\$ 3,144,038,076</b>	<b>\$ 593,184,215</b>

**Tourism & Recreation Taxable Sales**

**Percentage Change from Prior Year**

*(Source: Florida Department of Revenue, Florida Sales Tax Receipts)*

Month	2004	2005	2006	2007	2008	2010	2011	2012	2013	2014	2015
Jan	6.6%	5.1%	-2.1%	0.4%	5.0%	3.5%	2.0%	18.1%	1.4%	29.1%	5.1%
Feb	22.8%	5.0%	-1.2%	1.6%	2.7%	-5.2%	6.0%	18.4%	14.8%	6.7%	11.6%
Mar	29.8%	6.6%	-9.1%	4.5%	4.6%	8.5%	9.0%	10.5%	5.1%	9.5%	
Apr	12.9%	19.1%	0.5%	-5.3%	3.5%	7.3%	13.8%	8.7%	13.0%	0.8%	
May	20.1%	0.9%	4.1%	2.5%	-6.5%	3.8%	16.0%	1.6%	1.0%	11.8%	
Jun	9.5%	10.5%	4.3%	-2.3%	2.7%	6.8%	9.7%	6.3%	3.4%	12.3%	
Jul	19.2%	1.1%	2.7%	5.1%	-4.5%	2.8%	16.1%	8.3%	5.6%	6.8%	
Aug	19.9%	-7.8%	0.9%	4.8%	-3.3%	3.9%	17.7%	4.5%	6.1%	3.6%	
Sep	-14.1%	6.4%	-5.5%	23.4%	-1.7%	-2.0%	20.1%	3.0%	18.1%	10.1%	
Oct	-17.8%	19.4%	14.1%	6.0%	-27.0%	6.0%	21.4%	5.9%	5.5%	6.6%	
Nov	3.9%	-29.0%	34.0%	7.3%	-4.0%	7.5%	13.1%	7.9%	5.6%	10.9%	
Dec	4.8%	-7.2%	4.1%	6.3%	-7.4%	4.6%	19.4%	-0.7%	14.9%	7.9%	
	11.2%	2.3%	2.2%	3.4%	-1.9%	4.0%	13.2%	7.7%	7.8%	9.2%	8.4%

**Retail Taxable Sales (Incl Tourism & Recreation)**

**Percentage Change from Prior Year**

*(Source: Florida Department of Revenue, Florida Sales Tax Receipts)*

Month	2004	2005	2006	2007	2008	2010	2011	2012	2013	2014	2015
Jan	2.8%	7.7%	6.2%	-7.2%	2.9%	2.7%	2.9%	16.6%	-2.3%	21.3%	5.5%
Feb	10.8%	9.8%	1.3%	-1.1%	-0.5%	-4.3%	6.7%	15.8%	10.7%	5.6%	9.8%
Mar	20.0%	9.0%	-5.7%	2.4%	2.0%	5.4%	8.9%	9.7%	4.1%	8.5%	
Apr	9.1%	16.2%	0.7%	-3.9%	-2.8%	3.9%	13.6%	9.2%	8.0%	3.7%	
May	-3.3%	1.4%	6.4%	-0.7%	-6.7%	3.0%	14.4%	1.7%	0.7%	10.8%	
Jun	4.5%	7.4%	3.7%	-2.5%	-2.9%	-0.1%	10.4%	7.4%	1.1%	10.1%	
Jul	10.7%	2.0%	4.3%	-1.1%	-5.8%	0.2%	13.0%	8.6%	4.8%	6.7%	
Aug	12.3%	-2.9%	0.1%	3.1%	-5.8%	1.9%	14.6%	4.8%	4.3%	4.6%	
Sep	-14.0%	9.0%	-3.7%	14.4%	-6.4%	-2.2%	16.7%	4.2%	12.9%	9.1%	
Oct	-14.6%	17.9%	10.7%	-2.2%	-18.3%	3.0%	18.3%	4.7%	4.2%	5.9%	
Nov	3.7%	-22.5%	21.7%	3.1%	-8.4%	4.5%	10.5%	9.7%	6.1%	6.1%	
Dec	1.8%	17.3%	-14.3%	2.1%	-10.0%	2.8%	15.1%	2.2%	8.3%	7.8%	
Total	4.2%	5.8%	1.8%	0.0%	-4.6%	1.8%	11.8%	7.9%	5.1%	8.2%	7.7%

**Total Monroe County Taxable Sales (Incl Retail and Commercial)**

**Percentage Change from Prior Year**

*(Source: Florida Department of Revenue, Florida Sales Tax Receipts)*

Month	2004	2005	2006	2007	2008	2010	2011	2012	2013	2014	2015
Jan	7.0%	7.9%	4.8%	-5.0%	0.7%	2.5%	3.4%	14.5%	-2.0%	20.7%	5.7%
Feb	13.9%	8.4%	5.8%	-1.8%	-1.5%	-3.2%	7.0%	13.4%	10.4%	6.1%	9.4%
Mar	22.7%	7.9%	-1.2%	0.1%	1.2%	4.4%	8.7%	8.9%	3.7%	9.0%	
Apr	11.9%	14.6%	0.5%	-1.6%	-2.8%	4.3%	12.7%	7.5%	8.0%	4.2%	
May	12.1%	2.3%	8.6%	-0.8%	-6.9%	3.0%	13.1%	1.5%	2.3%	9.7%	
Jun	6.0%	8.9%	6.2%	-4.0%	-3.5%	1.2%	9.7%	6.3%	2.1%	9.9%	
Jul	13.3%	1.3%	7.8%	-2.9%	-5.8%	0.4%	11.9%	7.5%	4.9%	7.1%	
Aug	12.9%	-1.7%	2.9%	2.5%	-5.5%	1.2%	13.5%	4.3%	4.9%	8.0%	
Sep	-9.5%	10.2%	-0.5%	11.1%	-8.2%	-1.4%	14.5%	4.1%	12.4%	9.2%	
Oct	-13.5%	14.6%	15.7%	-5.5%	-16.4%	3.2%	16.0%	2.2%	6.9%	5.3%	
Nov	1.9%	-18.3%	22.1%	0.2%	-8.5%	3.4%	9.2%	9.0%	7.2%	6.0%	
Dec	2.9%	17.9%	-12.0%	0.3%	-10.6%	4.1%	13.4%	1.2%	9.7%	6.2%	
Total	7.4%	6.0%	4.2%	-0.8%	-5.1%	2.0%	11.0%	6.8%	5.7%	8.4%	7.5%



**Monroe County Sales Tax Data**

**Year-to-Date Tourism & Recreation Taxable Sales**

(Source: Florida Department of Revenue, Florida Sales Tax Receipts)

Month	2004	2005	2006	2007	2008	2009	2010	2011	2012	2013	2014	2015
Jan	\$ 86,188,387	\$ 90,602,540	\$ 88,732,397	\$ 89,070,267	\$ 93,481,600	\$ 88,325,467	\$ 91,377,441	\$ 93,247,402	\$ 110,159,410	\$ 111,658,057	\$ 144,154,923	\$ 151,565,527
Feb	\$ 182,471,748	\$ 191,664,949	\$ 188,545,986	\$ 190,491,590	\$ 197,619,498	\$ 191,323,672	\$ 189,009,251	\$ 196,781,200	\$ 232,721,087	\$ 252,385,004	\$ 294,257,614	\$ 319,049,479
Mar	\$ 300,898,150	\$ 317,937,405	\$ 303,267,647	\$ 310,362,567	\$ 322,954,373	\$ 296,501,598	\$ 303,112,212	\$ 321,187,600	\$ 370,146,705	\$ 396,775,747	\$ 452,434,562	
Apr	\$ 423,482,652	\$ 463,914,212	\$ 449,921,725	\$ 449,274,385	\$ 466,777,566	\$ 419,567,731	\$ 435,156,062	\$ 471,407,024	\$ 533,415,533	\$ 581,230,518	\$ 638,305,085	
May	\$ 534,979,524	\$ 576,447,747	\$ 567,105,736	\$ 569,391,028	\$ 579,068,981	\$ 529,766,157	\$ 549,584,358	\$ 604,094,400	\$ 668,208,822	\$ 717,412,493	\$ 790,557,079	
Jun	\$ 624,308,989	\$ 675,137,304	\$ 670,057,004	\$ 669,960,616	\$ 682,315,958	\$ 623,455,438	\$ 649,613,577	\$ 713,840,720	\$ 784,894,480	\$ 838,028,976	\$ 925,987,582	
Jul	\$ 713,066,570	\$ 764,890,055	\$ 762,266,013	\$ 766,858,252	\$ 774,869,977	\$ 708,930,091	\$ 737,439,942	\$ 815,794,808	\$ 895,291,841	\$ 954,572,427	\$ 1,050,442,342	
Aug	\$ 815,550,303	\$ 859,416,242	\$ 857,689,697	\$ 866,861,804	\$ 871,553,824	\$ 803,764,075	\$ 835,952,122	\$ 931,703,373	\$ 1,016,361,194	\$ 1,083,042,115	\$ 1,183,575,803	
Sep	\$ 879,079,566	\$ 927,040,522	\$ 921,623,241	\$ 945,759,286	\$ 949,134,210	\$ 879,602,382	\$ 910,266,811	\$ 1,020,986,129	\$ 1,108,342,096	\$ 1,191,672,328	\$ 1,303,210,959	
Oct	\$ 920,021,584	\$ 975,919,725	\$ 977,388,651	\$ 1,004,847,966	\$ 992,273,367	\$ 931,571,682	\$ 965,346,683	\$ 1,087,867,049	\$ 1,179,193,741	\$ 1,266,435,258	\$ 1,382,921,224	
Nov	\$ 1,004,598,764	\$ 1,035,941,244	\$ 1,057,790,460	\$ 1,091,100,054	\$ 1,075,057,678	\$ 1,017,671,707	\$ 1,057,864,469	\$ 1,192,483,572	\$ 1,292,121,922	\$ 1,385,681,364	\$ 1,515,169,981	
Dec	\$ 1,085,762,988	\$ 1,111,270,149	\$ 1,136,225,591	\$ 1,174,480,815	\$ 1,152,283,810	\$ 1,095,833,095	\$ 1,139,657,697	\$ 1,290,156,729	\$ 1,389,128,997	\$ 1,497,159,908	\$ 1,635,449,025	

**Retail Taxable Sales (Incl Tourism & Recreation)**

**Year-to-Date Retail Taxable Sales**

(Source: Florida Department of Revenue, Florida Sales Tax Receipts)

Month	2004	2005	2006	2007	2008	2009	2010	2011	2012	2013	2014	2015
Jan	\$ 168,124,834	\$ 181,129,655	\$ 192,341,922	\$ 178,477,409	\$ 183,697,026	\$ 163,116,423	\$ 167,493,102	\$ 172,324,117	\$ 200,967,962	\$ 196,426,832	\$ 238,300,309	\$ 251,515,137
Feb	\$ 331,815,466	\$ 360,926,042	\$ 374,559,961	\$ 358,692,207	\$ 362,961,510	\$ 331,728,587	\$ 328,891,763	\$ 344,566,069	\$ 400,447,550	\$ 417,176,885	\$ 471,464,109	\$ 507,538,636
Mar	\$ 526,200,259	\$ 572,852,139	\$ 574,367,509	\$ 563,196,792	\$ 571,492,666	\$ 506,031,025	\$ 512,684,724	\$ 544,791,021	\$ 620,015,675	\$ 645,847,456	\$ 719,550,726	
Apr	\$ 738,752,289	\$ 819,768,739	\$ 822,963,458	\$ 802,025,870	\$ 803,572,458	\$ 708,430,959	\$ 723,070,988	\$ 783,760,649	\$ 881,015,135	\$ 927,690,347	\$ 1,011,877,923	
May	\$ 930,250,089	\$ 1,014,028,960	\$ 1,029,665,222	\$ 1,007,369,682	\$ 995,217,394	\$ 890,771,741	\$ 910,896,994	\$ 998,609,068	\$ 1,099,608,024	\$ 1,147,784,807	\$ 1,255,688,268	
Jun	\$ 1,098,722,750	\$ 1,194,997,133	\$ 1,217,284,894	\$ 1,190,361,023	\$ 1,172,860,531	\$ 1,057,313,938	\$ 1,077,197,942	\$ 1,182,148,347	\$ 1,296,764,719	\$ 1,347,100,323	\$ 1,475,161,926	
Jul	\$ 1,267,362,861	\$ 1,367,061,105	\$ 1,396,745,567	\$ 1,367,769,237	\$ 1,340,064,966	\$ 1,215,660,250	\$ 1,235,936,088	\$ 1,361,527,386	\$ 1,491,551,475	\$ 1,551,268,201	\$ 1,692,966,040	
Aug	\$ 1,448,179,660	\$ 1,542,656,975	\$ 1,572,432,515	\$ 1,548,861,393	\$ 1,510,612,603	\$ 1,380,780,340	\$ 1,404,208,982	\$ 1,554,316,460	\$ 1,693,681,174	\$ 1,762,182,483	\$ 1,913,611,321	
Sep	\$ 1,574,446,541	\$ 1,680,234,826	\$ 1,704,972,923	\$ 1,700,435,437	\$ 1,652,457,775	\$ 1,518,901,821	\$ 1,539,322,936	\$ 1,712,049,643	\$ 1,858,104,528	\$ 1,947,771,693	\$ 2,116,028,047	
Oct	\$ 1,668,129,529	\$ 1,790,698,982	\$ 1,827,202,864	\$ 1,820,006,554	\$ 1,750,094,694	\$ 1,625,258,887	\$ 1,648,840,953	\$ 1,841,634,290	\$ 1,993,756,013	\$ 2,089,175,970	\$ 2,265,721,351	
Nov	\$ 1,824,016,306	\$ 1,911,474,624	\$ 1,974,224,135	\$ 1,971,640,794	\$ 1,888,930,476	\$ 1,768,374,546	\$ 1,798,360,131	\$ 2,006,798,353	\$ 2,174,875,867	\$ 2,281,413,563	\$ 2,469,763,468	
Dec	\$ 1,975,123,739	\$ 2,088,787,280	\$ 2,126,153,899	\$ 2,126,689,159	\$ 2,028,471,544	\$ 1,908,924,726	\$ 1,942,872,879	\$ 2,173,098,438	\$ 2,344,777,020	\$ 2,465,495,147	\$ 2,668,285,351	

**Total Monroe County Taxable Sales (Incl Retail and Commercial)**

**Year-to-Date Total County Taxable Sales**

(Source: Florida Department of Revenue, Florida Sales Tax Receipts)

Month	2004	2005	2006	2007	2008	2009	2010	2011	2012	2013	2014	2015
Jan	\$ 202,504,651	\$ 218,533,774	\$ 228,962,177	\$ 217,573,588	\$ 219,148,805	\$ 193,448,969	\$ 198,350,155	\$ 205,027,113	\$ 234,800,304	\$ 229,993,883	\$ 277,717,362	\$ 293,460,025
Feb	\$ 396,711,604	\$ 429,062,476	\$ 451,761,654	\$ 436,381,633	\$ 434,620,004	\$ 392,391,286	\$ 390,950,342	\$ 411,184,512	\$ 468,541,496	\$ 488,095,063	\$ 551,628,489	\$ 593,184,215
Mar	\$ 622,362,246	\$ 672,644,788	\$ 692,344,805	\$ 677,204,735	\$ 678,228,821	\$ 598,425,804	\$ 606,039,003	\$ 644,980,004	\$ 723,164,177	\$ 752,102,594	\$ 839,303,934	
Apr	\$ 868,300,187	\$ 954,567,104	\$ 975,736,395	\$ 956,093,949	\$ 949,193,800	\$ 834,311,358	\$ 852,090,950	\$ 922,189,530	\$ 1,021,272,079	\$ 1,073,930,357	\$ 1,174,638,249	
May	\$ 1,090,314,117	\$ 1,181,718,675	\$ 1,222,394,690	\$ 1,200,853,732	\$ 1,177,038,182	\$ 1,049,261,802	\$ 1,073,518,707	\$ 1,172,706,386	\$ 1,275,636,301	\$ 1,334,152,725	\$ 1,460,082,757	
Jun	\$ 1,288,272,528	\$ 1,397,339,292	\$ 1,451,458,119	\$ 1,420,707,332	\$ 1,389,272,112	\$ 1,245,240,324	\$ 1,271,865,235	\$ 1,390,216,183	\$ 1,506,797,370	\$ 1,570,074,255	\$ 1,719,368,656	
Jul	\$ 1,489,120,634	\$ 1,600,894,876	\$ 1,670,869,364	\$ 1,633,818,820	\$ 1,590,063,245	\$ 1,434,271,898	\$ 1,461,744,364	\$ 1,602,722,044	\$ 1,735,279,623	\$ 1,809,834,729	\$ 1,976,196,216	
Aug	\$ 1,699,047,325	\$ 1,807,314,242	\$ 1,883,263,983	\$ 1,851,554,487	\$ 1,795,889,538	\$ 1,630,928,545	\$ 1,660,727,849	\$ 1,828,518,518	\$ 1,970,698,201	\$ 2,056,904,078	\$ 2,243,047,616	
Sep	\$ 1,852,194,448	\$ 1,976,054,430	\$ 2,051,141,648	\$ 2,037,986,944	\$ 1,967,085,708	\$ 1,797,077,325	\$ 1,824,613,814	\$ 2,016,242,900	\$ 2,166,208,496	\$ 2,276,654,445	\$ 2,483,031,052	
Oct	\$ 1,972,739,912	\$ 2,114,167,408	\$ 2,210,931,669	\$ 2,188,914,374	\$ 2,093,280,251	\$ 1,930,551,815	\$ 1,962,360,233	\$ 2,176,094,186	\$ 2,329,555,172	\$ 2,451,275,398	\$ 2,666,915,709	
Nov	\$ 2,157,457,397	\$ 2,265,163,591	\$ 2,395,298,324	\$ 2,373,605,530	\$ 2,262,350,573	\$ 2,103,499,813	\$ 2,141,134,931	\$ 2,371,353,991	\$ 2,542,434,361	\$ 2,679,520,927	\$ 2,908,924,005	
Dec	\$ 2,338,003,277	\$ 2,478,105,906	\$ 2,582,751,549	\$ 2,561,644,375	\$ 2,430,392,164	\$ 2,272,355,962	\$ 2,316,833,695	\$ 2,570,678,506	\$ 2,744,218,525	\$ 2,900,820,760	\$ 3,144,038,076	

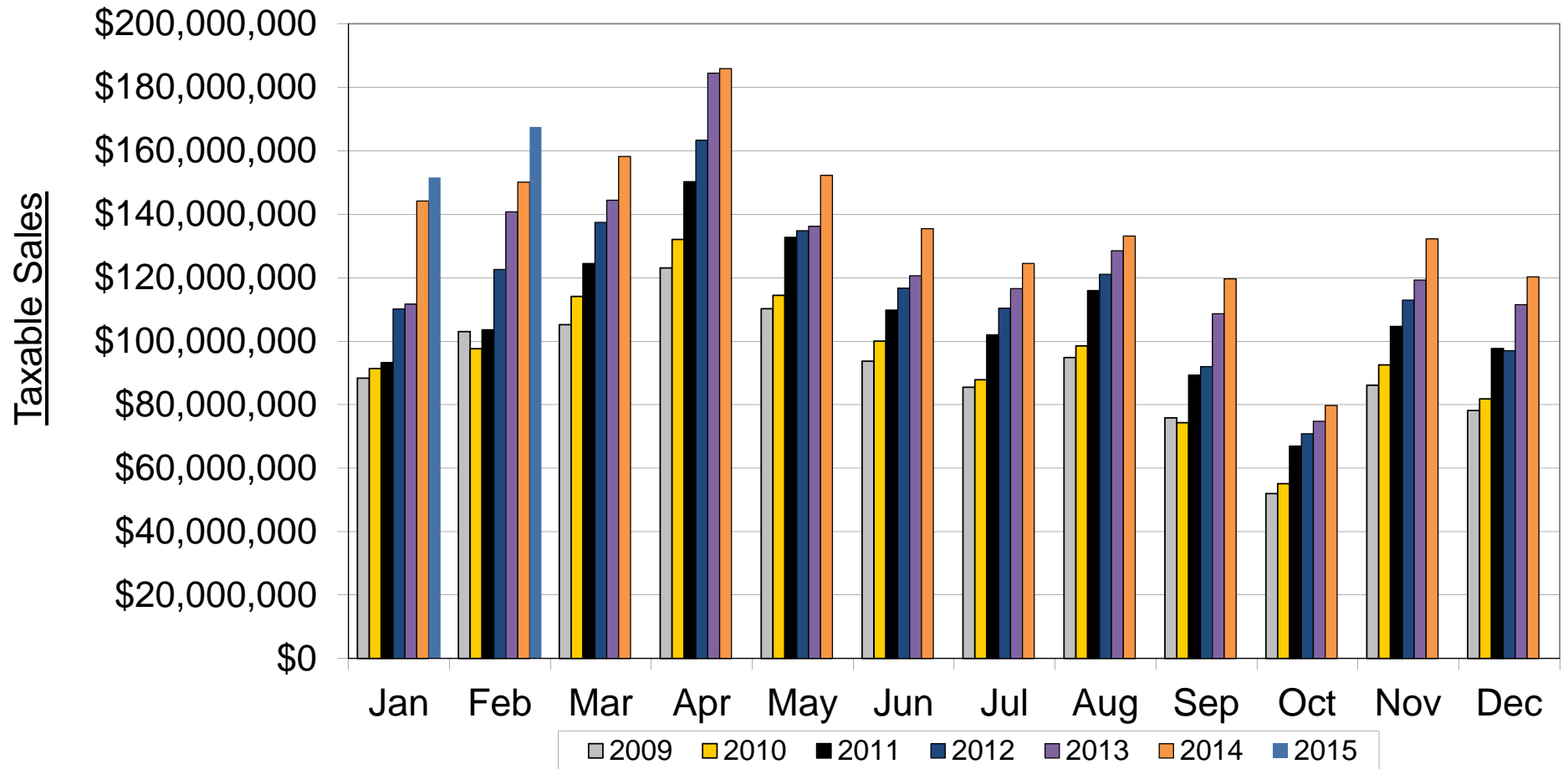
## **Glossary:**

**Tourism & Recreation Taxable Sales:** Restaurants, lunchrooms, Catering Services, Drinking Places (Alcoholic Beverages on Premises), Hotel/Motel Accommodations, Rooming Houses, Camps & Other Lodging, Camera & Photographic Supply Stores, Gifts, Cards, Novelty, Hobby, Crafts & Toy Stores, Admissions, Amusement & Recreation Services, Rental of Tangible Personal Property, Exempt Facilities.

**Retail Taxable Sales:** Food & Beverage Stores, Meat Markets, Poultry, Seafood Dealers, Bakeries, Eating & Drinking Places (not restaurants), Candy, Nut, Confectionary & Dairy Product Stores, Apparel & Accessory Stores, Shoe Stores, Hat Shops, Department Stores, Variety Stores, Drug Stores Jewelry, Leather and Sporting Goods, Farm Implements & Equipment Suppliers, Used Merchandise Stores, Second-Hand Stores, Antique Shops, Sewing, Needlework & Piece Goods Stores, Automotive Dealers (Sale/Lease), Tag Agencies & Tax Collectors, Automotive Accessories & Parts, Gasoline Service Stations, Automobile Repair & Services, Aircraft Dealers, Boat Dealers, Home Furniture, Furnishings, & Equipment, Household Appliances & Accessories, Radio, Television, Consumer Electronics, Computers, Music Stores, Barber Shops, Beauty Shops, and Personal Appearance Services, Book Stores, Tobacco Stores & Stands, Florists, Fuel Dealers, LP Gas Dealers, Itinerant Vendors, Peddlers, Direct Selling Establishments, Laundry, Garment, Linen & Other Cleaning Services, Horse, Cattle and Pet Dealers, News Stands, Social, Fraternal, Commercial Clubs & Associations (All Dues), Pawn Shops, Communication, Telephone, Telegraph, Radio & Television Stations, Repair of Tangible Personal Property, Nurseries, Landscapes, Tree Experts, Vending Machine Operators, Utilities, Electricity, Gas, Water, Sewer, Flea Market Management & Space Providers, Other Professional Services, Taxable Services (per Chapter 212, F.S.), Miscellaneous, Other.

**Commercial Taxable Sales:** Feed & Seed Stores, Retail Nurseries, Paint, Wallpaper & Hardware Dealers, General Miscellaneous Merchandise Stores, Store & Office Equipment, Office Supplies, Building Contractors, Heating & Air Conditioning, Electrical, Plumbing, Well Drilling, Pipes, Decorating, Painting, Papering, Drapery Installation, Lumber & Other Building Material Dealers, Machine Shops, Foundries, Iron Work, Storage & Warehousing, Industrial Machinery, Fabrication & Sales of Cabinets, Windows, Doors, Awning, Septic Tanks, Neon Signs, Plastic, etc., Manufacturing, Bottlers, Transportation, Railroads, Airlines, Bus, Trucking Lines, Graphic Arts, Printing, Publishing, Engraving, Binding, Blueprinting, Insurance, Banking, S&L's, Research Information Services, Income Tax Reports, Sanitary & Industrial Supplies, Advertising, Mining, Drilling, Top Soil, Clay, Sand, Fill Dirt, Importing & Exporting, Medical, Dental, Surgical, Optical & Related Professional Services, Wholesale Dealers, Schools, Colleges, & Educational Services, Lease or Rental of Commercial Real Property, Privately Owned Parking Lots, Boat Docks, & Aircraft Hangers, Veterinary Services, Commercial Fishing.

Monroe County Sales Tax Data  
Tourism & Recreation Taxable Sales  
2009 - 2015



*(Source: Florida Department of Revenue, Florida Sales Tax Receipts)*