

**Key West Cruise Ship Data - Passenger Counts**

**Number of Passenger Arrivals**

*(Source: City of Key West Port Operations Office)*

Month	2000	2001	2002	2003	2004	2005	2006	2007	2008	2009	2010	2011	2012	2013	2014
Jan	73,526	65,528	86,393	109,501	95,356	104,759	96,322	75,714	86,253	71,819	69,747	95,777	76,106	81,799	81,986
Feb	79,033	62,578	81,250	109,767	91,782	97,204	85,508	73,057	81,686	77,595	60,465	82,113	86,879	74,668	80,368
Mar	86,015	71,810	88,441	109,757	108,987	112,234	100,221	93,470	82,145	78,309	79,734	86,921	91,352	89,828	108,883
Apr	56,450	61,165	82,478	103,891	88,213	89,646	89,444	81,119	78,328	72,938	72,484	77,691	73,143	63,134	78,431
May	42,028	37,641	71,832	76,109	75,110	67,704	64,016	46,026	44,222	91,120	60,829	49,793	65,663	55,210	59,210
Jun	39,851	40,240	72,245	76,122	69,907	64,204	62,702	47,437	35,910	79,830	69,457	46,502	59,844	44,073	48,950
Jul	40,502	46,107	83,902	78,078	46,355	63,989	62,566	52,627	45,266	64,231	64,665	54,129	67,874	47,655	47,138
Aug	45,898	42,481	79,527	84,158	62,023	68,728	50,600	69,083	33,517	58,605	71,077	69,442	55,407	50,179	38,059
Sep	37,501	29,999	75,129	65,507	37,725	49,681	41,626	57,233	45,927	61,642	53,067	41,555	49,084	39,458	38,599
Oct	36,332	49,306	80,551	64,237	64,920	38,120	60,080	68,205	50,362	64,745	77,422	64,161	63,268	55,520	49,153
Nov	58,303	80,891	102,590	73,942	78,704	64,312	77,532	60,764	64,957	63,456	80,471	60,217	59,445	65,190	65,022
Dec	69,048	91,242	126,166	116,153	114,988	103,652	97,576	92,184	92,359	75,119	90,852	83,157	65,648	98,418	101,161
<b>Total</b>	<b>664,487</b>	<b>678,988</b>	<b>1,030,504</b>	<b>1,067,222</b>	<b>934,070</b>	<b>924,233</b>	<b>888,193</b>	<b>816,919</b>	<b>740,932</b>	<b>859,409</b>	<b>850,270</b>	<b>811,458</b>	<b>813,713</b>	<b>765,132</b>	<b>796,960</b>

**Key West Cruise Ship Data - Passenger Counts**

**Percentage Change from Prior Year**

*(Source: City of Key West Port Operations Office)*

Month	2000	2001	2002	2003	2004	2005	2006	2007	2008	2009	2010	2011	2012	2013	2014
Jan	20.2%	-10.9%	31.8%	26.7%	-12.9%	9.9%	-8.1%	-21.4%	13.9%	-16.7%	-2.9%	37.3%	-20.5%	7.5%	0.2%
Feb	31.6%	-20.8%	29.8%	35.1%	-16.4%	5.9%	-12.0%	-14.6%	11.8%	-5.0%	-22.1%	35.8%	5.8%	-14.1%	7.6%
Mar	29.0%	-16.5%	23.2%	24.1%	-0.7%	3.0%	-10.7%	-6.7%	-12.1%	-4.7%	1.8%	9.0%	5.1%	-1.7%	21.2%
Apr	-5.7%	8.4%	34.8%	26.0%	-15.1%	1.6%	-0.2%	-9.3%	-3.4%	-6.9%	-0.6%	7.2%	-5.9%	-13.7%	24.2%
May	37.4%	-10.4%	90.8%	6.0%	-1.3%	-9.9%	-5.4%	-28.1%	-3.9%	106.1%	-33.2%	-18.1%	31.9%	-15.9%	7.2%
Jun	-7.1%	1.0%	79.5%	5.4%	-8.2%	-8.2%	-2.3%	-24.3%	-24.3%	122.3%	-13.0%	-33.0%	28.7%	-26.4%	11.1%
Jul	-5.1%	13.8%	82.0%	-6.9%	-40.6%	38.0%	-2.2%	-15.9%	-14.0%	41.9%	0.7%	-16.3%	25.4%	-29.8%	-1.1%
Aug	-15.1%	-7.4%	87.2%	5.8%	-26.3%	10.8%	-26.4%	36.5%	-51.5%	74.9%	21.3%	-2.3%	-20.2%	-9.4%	-24.2%
Sep	-21.5%	-20.0%	150.4%	-12.8%	-42.4%	31.7%	-16.2%	37.5%	-19.8%	34.2%	-13.9%	-21.7%	18.1%	-19.6%	-2.2%
Oct	-5.4%	35.7%	63.4%	-20.3%	1.1%	-41.3%	57.6%	13.5%	-26.2%	28.6%	19.6%	-17.1%	-1.4%	-12.2%	-11.5%
Nov	12.5%	38.7%	26.8%	-27.9%	6.4%	-18.3%	20.6%	-21.6%	6.9%	-2.3%	26.8%	-25.2%	-1.3%	9.7%	-0.3%
Dec	-13.1%	32.1%	38.3%	-7.9%	-1.0%	-9.9%	-5.9%	-5.5%	0.2%	-18.7%	20.9%	-8.5%	-21.1%	49.9%	2.8%
<b>Total</b>	<b>4.6%</b>	<b>2.2%</b>	<b>51.8%</b>	<b>3.6%</b>	<b>-12.5%</b>	<b>-1.1%</b>	<b>-3.9%</b>	<b>-8.0%</b>	<b>-9.3%</b>	<b>16.0%</b>	<b>-1.1%</b>	<b>-4.6%</b>	<b>0.3%</b>	<b>-6.0%</b>	<b>4.2%</b>

**Key West Cruise Ship Data - Port Calls**

**Number of Port Calls**

*(Source: City of Key West Port Operations Office)*

Month	2000	2001	2002	2003	2004	2005	2006	2007	2008	2009	2010	2011	2012	2013	2014
Jan	53	37	49	60	49	52	50	41	46	37	37	45	36	38	37
Feb	53	36	47	56	40	48	44	38	40	39	29	37	39	33	37
Mar	58	37	49	58	54	57	48	48	39	34	35	40	39	39	47
Apr	34	32	43	51	42	51	41	39	37	34	31	34	27	25	32
May	26	19	35	32	36	33	29	21	18	37	24	18	24	20	24
Jun	19	17	32	29	31	28	26	20	14	29	26	16	21	15	16
Jul	19	19	35	27	20	28	26	22	18	23	23	14	22	15	16
Aug	23	18	32	30	28	31	21	28	13	21	26	25	18	16	13
Sep	20	15	30	29	19	24	20	26	20	25	21	16	18	14	14
Oct	21	27	42	29	34	18	29	35	22	28	35	27	23	22	20
Nov	36	48	48	43	46	35	40	31	31	28	36	25	29	30	29
Dec	44	57	78	61	63	55	51	49	46	34	39	36	31	44	51
<b>Total</b>	<b>406</b>	<b>362</b>	<b>520</b>	<b>505</b>	<b>462</b>	<b>460</b>	<b>425</b>	<b>398</b>	<b>344</b>	<b>369</b>	<b>362</b>	<b>333</b>	<b>327</b>	<b>311</b>	<b>336</b>

**Key West Cruise Ship Data - Port Calls**

**Percentage Change from Prior Year**

*(Source: City of Key West Port Operations Office)*

Month	2000	2001	2002	2003	2004	2005	2006	2007	2008	2009	2010	2011	2012	2013	2014
Jan	26.2%	-30.2%	32.4%	22.4%	-18.3%	6.1%	-3.8%	-18.0%	12.2%	-19.6%	0.0%	21.6%	-20.0%	5.6%	-2.6%
Feb	23.3%	-32.1%	30.6%	19.1%	-28.6%	20.0%	-8.3%	-13.6%	5.3%	-2.5%	-25.6%	27.6%	5.4%	-15.4%	12.1%
Mar	28.9%	-36.2%	32.4%	18.4%	-6.9%	5.6%	-15.8%	0.0%	-18.8%	-12.8%	2.9%	14.3%	-2.5%	0.0%	20.5%
Apr	-17.1%	-5.9%	34.4%	18.6%	-17.6%	21.4%	-19.6%	-4.9%	-5.1%	-8.1%	-8.8%	9.7%	-20.6%	-7.4%	28.0%
May	13.0%	-26.9%	84.2%	-8.6%	12.5%	-8.3%	-12.1%	-27.6%	-14.3%	105.6%	-35.1%	-25.0%	33.3%	-16.7%	20.0%
Jun	-20.8%	-10.5%	88.2%	-9.4%	6.9%	-9.7%	-7.1%	-23.1%	-30.0%	107.1%	-10.3%	-38.5%	31.3%	-28.6%	6.7%
Jul	-17.4%	0.0%	84.2%	-22.9%	-25.9%	40.0%	-7.1%	-15.4%	-18.2%	27.8%	0.0%	-39.1%	57.1%	-31.8%	6.7%
Aug	-20.7%	-21.7%	77.8%	-6.3%	-6.7%	10.7%	-32.3%	33.3%	-53.6%	61.5%	23.8%	-3.8%	-28.0%	-11.1%	-18.8%
Sep	-33.3%	-25.0%	100.0%	-3.3%	-34.5%	26.3%	-16.7%	30.0%	-23.1%	25.0%	-16.0%	-23.8%	12.5%	-22.2%	0.0%
Oct	-22.2%	28.6%	55.6%	-31.0%	17.2%	-47.1%	61.1%	20.7%	-37.1%	27.3%	25.0%	-22.9%	-14.8%	-4.3%	-9.1%
Nov	16.1%	33.3%	0.0%	-10.4%	7.0%	-23.9%	14.3%	-22.5%	0.0%	-9.7%	28.6%	-30.6%	16.0%	3.4%	-3.3%
Dec	-17.0%	29.5%	36.8%	-21.8%	3.3%	-12.7%	-7.3%	-3.9%	-6.1%	-26.1%	14.7%	-7.7%	-13.9%	41.9%	15.9%
<b>Total</b>	<b>-1.2%</b>	<b>-10.8%</b>	<b>43.6%</b>	<b>-2.9%</b>	<b>-8.5%</b>	<b>-0.4%</b>	<b>-7.6%</b>	<b>-6.4%</b>	<b>-13.6%</b>	<b>7.3%</b>	<b>-1.9%</b>	<b>-8.0%</b>	<b>-1.8%</b>	<b>-4.9%</b>	<b>8.0%</b>

**Key West Cruise Ship Data - Passenger Counts**

**Year-to-Date Number of Passenger Arrivals**

*(Source: City of Key West Port Operations Office)*

Month	2000	2001	2002	2003	2004	2005	2006	2007	2008	2009	2010	2011	2012	2013	2014
Jan	73,526	65,528	86,393	109,501	95,356	104,759	96,322	75,714	86,253	71,819	69,747	95,777	76,106	81,799	81,986
Feb	152,559	128,106	167,643	219,268	187,138	201,963	181,830	148,771	167,939	149,414	130,212	177,890	162,985	156,467	162,354
Mar	238,574	199,916	256,084	329,025	296,125	314,197	282,051	242,241	250,084	227,723	209,946	264,811	254,337	246,295	271,237
Apr	295,024	261,081	338,562	432,916	384,338	403,843	371,495	323,360	328,412	300,661	282,430	342,502	327,480	309,429	349,668
May	337,052	298,722	410,394	509,025	459,448	471,547	435,511	369,386	372,634	391,781	343,259	392,295	393,143	364,639	408,878
Jun	376,903	338,962	482,639	585,147	529,355	535,751	498,213	416,823	408,544	471,611	412,716	438,797	452,987	408,712	457,828
Jul	417,405	385,069	566,541	663,225	575,710	599,740	560,779	469,450	453,810	535,842	477,381	492,926	520,861	456,367	504,966
Aug	463,303	427,550	646,068	747,383	637,733	668,468	611,379	538,533	487,327	594,447	548,458	562,368	576,268	506,546	543,025
Sep	500,804	457,549	721,197	812,890	675,458	718,149	653,005	595,766	533,254	656,089	601,525	603,923	625,352	546,004	581,624
Oct	537,136	506,855	801,748	877,127	740,378	756,269	713,085	663,971	583,616	720,834	678,947	668,084	688,620	601,524	630,777
Nov	595,439	587,746	904,338	951,069	819,082	820,581	790,617	724,735	648,573	784,290	759,418	728,301	748,065	666,714	695,799
Dec	664,487	678,988	1,030,504	1,067,222	934,070	924,233	888,193	816,919	740,932	859,409	850,270	811,458	813,713	765,132	796,960

**Key West Cruise Ship Data - Passenger Counts**

**Year-to-Date Percentage Change from Prior Year**

*(Source: City of Key West Port Operations Office)*

Month	2000	2001	2002	2003	2004	2005	2006	2007	2008	2009	2010	2011	2012	2013	2014
Jan	20.2%	-10.9%	31.8%	26.7%	-12.9%	9.9%	-8.1%	-21.4%	13.9%	-16.7%	-2.9%	37.3%	-20.5%	7.5%	0.2%
Feb	25.8%	-16.0%	30.9%	30.8%	-14.7%	7.9%	-10.0%	-18.2%	12.9%	-11.0%	-12.9%	36.6%	-8.4%	-4.0%	3.8%
Mar	26.9%	-16.2%	28.1%	28.5%	-10.0%	6.1%	-10.2%	-14.1%	3.2%	-8.9%	-7.8%	26.1%	-4.0%	-3.2%	10.1%
Apr	19.1%	-11.5%	29.7%	27.9%	-11.2%	5.1%	-8.0%	-13.0%	1.6%	-8.5%	-6.1%	21.3%	-4.4%	-5.5%	13.0%
May	21.1%	-11.4%	37.4%	24.0%	-9.7%	2.6%	-7.6%	-15.2%	0.9%	5.1%	-12.4%	14.3%	0.2%	-7.3%	12.1%
Jun	17.3%	-10.1%	42.4%	21.2%	-9.5%	1.2%	-7.0%	-16.3%	-2.0%	15.4%	-12.5%	6.3%	3.2%	-9.8%	12.0%
Jul	14.7%	-7.7%	47.1%	17.1%	-13.2%	4.2%	-6.5%	-16.3%	-3.3%	18.1%	-10.9%	3.3%	5.7%	-12.4%	10.6%
Aug	10.8%	-7.7%	51.1%	15.7%	-14.7%	4.8%	-8.5%	-11.9%	-9.5%	22.0%	-7.7%	2.5%	2.5%	-12.1%	7.2%
Sep	7.5%	-8.6%	57.6%	12.7%	-16.9%	6.3%	-9.1%	-8.8%	-10.5%	23.0%	-8.3%	0.4%	3.5%	-12.7%	6.5%
Oct	6.5%	-5.6%	58.2%	9.4%	-15.6%	2.1%	-5.7%	-6.9%	-12.1%	23.5%	-5.8%	-1.6%	3.1%	-12.6%	4.9%
Nov	7.1%	-1.3%	53.9%	5.2%	-13.9%	0.2%	-3.7%	-8.3%	-10.5%	20.9%	-3.2%	-4.1%	2.7%	-10.9%	4.4%
Dec	4.6%	2.2%	51.8%	3.6%	-12.5%	-1.1%	-3.9%	-8.0%	-9.3%	16.0%	-1.1%	-4.6%	0.3%	-6.0%	4.2%

**Key West Cruise Ship Data - Port Calls**

**Year-to-Date Number of Port Calls**

*(Source: City of Key West Port Operations Office)*

Month	2000	2001	2002	2003	2004	2005	2006	2007	2008	2009	2010	2011	2012	2013	2014
Jan	53	37	49	60	49	52	50	41	46	37	37	45	36	38	37
Feb	106	73	96	116	89	100	94	79	86	76	66	82	75	71	74
Mar	164	110	145	174	143	157	142	127	125	110	101	122	114	110	121
Apr	198	142	188	225	185	208	183	166	162	144	132	156	141	135	153
May	224	161	223	257	221	241	212	187	180	181	156	174	165	155	177
Jun	243	178	255	286	252	269	238	207	194	210	182	190	186	170	193
Jul	262	197	290	313	272	297	264	229	212	233	205	204	208	185	209
Aug	285	215	322	343	300	328	285	257	225	254	231	229	226	201	222
Sep	305	230	352	372	319	352	305	283	245	279	252	245	244	215	236
Oct	326	257	394	401	353	370	334	318	267	307	287	272	267	237	256
Nov	362	305	442	444	399	405	374	349	298	335	323	297	296	267	285
Dec	406	362	520	505	462	460	425	398	344	369	362	333	327	311	336

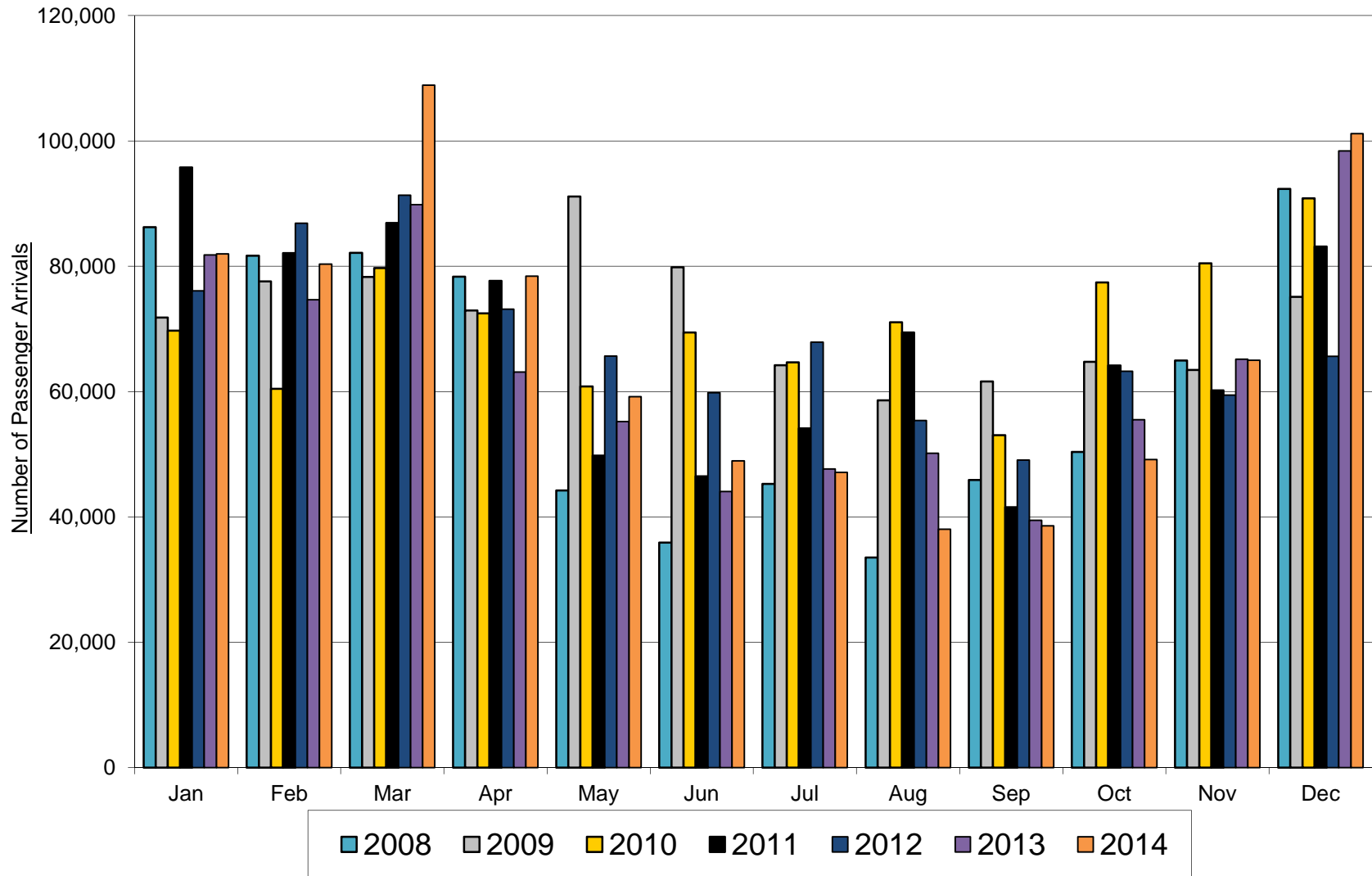
**Key West Cruise Ship Data - Port Calls**

**Year-to-Date Percentage Change from Prior Year**

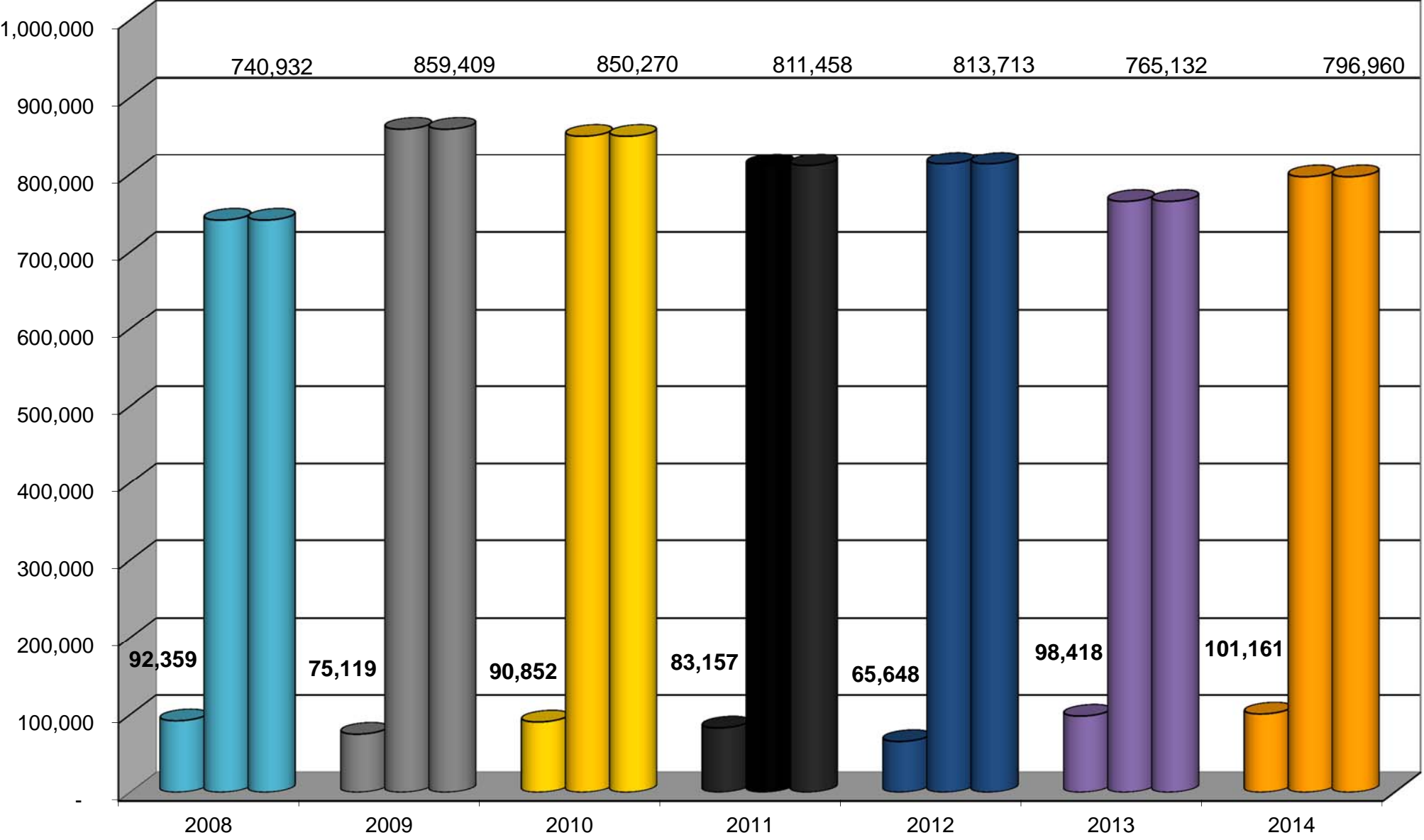
*(Source: City of Key West Port Operations Office)*

Month	2000	2001	2002	2003	2004	2005	2006	2007	2008	2009	2010	2011	2012	2013	2014
Jan	26.2%	-30.2%	32.4%	22.4%	-18.3%	6.1%	-3.8%	-18.0%	12.2%	-19.6%	0.0%	21.6%	-20.0%	5.6%	-2.6%
Feb	24.7%	-31.1%	31.5%	20.8%	-23.3%	12.4%	-6.0%	-16.0%	8.9%	-11.6%	-13.2%	24.2%	-8.5%	-5.3%	4.2%
Mar	26.2%	-32.9%	31.8%	20.0%	-17.8%	9.8%	-9.6%	-10.6%	-1.6%	-12.0%	-8.2%	20.8%	-6.6%	-3.5%	10.0%
Apr	15.8%	-28.3%	32.4%	19.7%	-17.8%	12.4%	-12.0%	-9.3%	-2.4%	-11.1%	-8.3%	18.2%	-9.6%	-4.3%	13.3%
May	15.5%	-28.1%	38.5%	15.2%	-14.0%	9.0%	-12.0%	-11.8%	-3.7%	0.6%	-13.8%	11.5%	-5.2%	-6.1%	14.2%
Jun	11.5%	-26.7%	43.3%	12.2%	-11.9%	6.7%	-11.5%	-13.0%	-6.3%	8.2%	-13.3%	4.4%	-2.1%	-8.6%	13.5%
Jul	8.7%	-24.8%	47.2%	7.9%	-13.1%	9.2%	-11.1%	-13.3%	-7.4%	9.9%	-12.0%	-0.5%	2.0%	-11.1%	13.0%
Aug	5.6%	-24.6%	49.8%	6.5%	-12.5%	9.3%	-13.1%	-9.8%	-12.5%	12.9%	-9.1%	-0.9%	-1.3%	-11.1%	10.4%
Sep	1.7%	-24.6%	53.0%	5.7%	-14.2%	10.3%	-13.4%	-7.2%	-13.4%	13.9%	-9.7%	-2.8%	-0.4%	-11.9%	9.8%
Oct	-0.3%	-21.2%	53.3%	1.8%	-12.0%	4.8%	-9.7%	-4.8%	-16.0%	15.0%	-6.5%	-5.2%	-1.8%	-11.2%	8.0%
Nov	1.1%	-15.7%	44.9%	0.5%	-10.1%	1.5%	-7.7%	-6.7%	-14.6%	12.4%	-3.6%	-8.0%	-0.3%	-9.8%	6.7%
Dec	-1.2%	-10.8%	43.6%	-2.9%	-8.5%	-0.4%	-7.6%	-6.4%	-13.6%	7.3%	-1.9%	-8.0%	-1.8%	-4.9%	8.0%

Key West Port Operations  
Key West Cruise Ship Data - Passenger Counts  
Number of Passenger Arrivals 2008-2014



Port of Key West  
Cruise Ship Passenger Arrivals  
December Month, Year-to-Date & Full Calendar Year Totals for 2008 - 2014



**Key West Ferry Data - Passenger Counts**

**Number of Passenger Arrivals (Assumed at 1/2 In/Out Volume)**

*(Source: City of Key West - Historic Seaport/Marinas Dept.)*

Month	2007	2008	2009	2010	2011	2012	2013	2014
Jan	7,510	6,838	6,448	5,421	5,815	6,746	7,444	7,326
Feb	10,323	12,065	9,817	7,629	10,624	11,281	10,772	12,046
Mar	15,582	13,424	11,633	10,992	14,276	13,653	11,650	13,247
Apr	11,038	9,129	8,140	9,111	9,289	7,330	8,722	8,896
May	9,037	6,548	5,983	6,465	6,503	5,932	6,038	6,854
Jun	8,049	5,974	5,289	5,491	5,028	4,334	4,395	5,293
Jul	8,552	6,379	6,265	5,416	5,668	5,258	5,124	5,104
Aug	6,358	4,350	4,460	4,260	3,938	3,305	4,772	5,164
Sep	4,490	2,229	3,067	3,267	3,404	960	4,129	4,106
Oct	5,759	4,367	4,510	5,092	5,032	2,728	5,598	5,911
Nov	5,444	3,912	4,537	3,982	4,467	3,950	4,121	5,124
Dec	6,951	4,772	4,652	3,793	5,175	4,648	5,585	6,903
Total	99,090	79,985	74,801	70,919	79,219	70,125	78,348	85,973

**Key West Ferry Data - Passenger Counts**

**Year-to-Date Passenger Arrivals (Assumed at 1/2 In/Out Volume)**

*(Source: City of Key West - Historic Seaport/Marinas Dept.)*

Month	2007	2008	2009	2010	2011	2012	2013	2014
Jan	7,510	6,838	6,448	5,421	5,815	6,746	7,444	7,326
Feb	17,832	18,903	16,265	13,050	16,439	18,027	18,216	19,372
Mar	33,414	32,327	27,898	24,042	30,715	31,680	29,866	32,619
Apr	44,452	41,456	36,038	33,153	40,004	39,010	38,588	41,515
May	53,488	48,003	42,021	39,618	46,507	44,942	44,626	48,368
Jun	61,537	53,977	47,310	45,109	51,535	49,276	49,020	53,661
Jul	70,088	60,355	53,575	50,525	57,203	54,534	54,144	58,765
Aug	76,446	64,705	58,035	54,785	61,141	57,839	58,916	63,929
Sep	80,936	66,934	61,102	58,052	64,545	58,799	63,044	68,035
Oct	86,695	71,301	65,612	63,144	69,577	61,527	68,642	73,946
Nov	92,139	75,213	70,149	67,126	74,044	65,477	72,763	79,070
Dec	99,090	79,985	74,801	70,919	79,219	70,125	78,348	85,973

**Key West Ferry Data - Passenger Counts**

**Percentage Change from Prior Year**

*(Source: City of Key West - Historic Seaport/Marinas Dept.)*

Month	2007	2008	2009	2010	2011	2012	2013	2014
Jan	25.5%	-8.9%	-5.7%	-15.9%	7.3%	16.0%	10.3%	-1.6%
Feb	13.0%	16.9%	-18.6%	-22.3%	39.3%	6.2%	-4.5%	11.8%
Mar	17.8%	-13.8%	-13.3%	-5.5%	29.9%	-4.4%	-14.7%	13.7%
Apr	6.5%	-17.3%	-10.8%	11.9%	2.0%	-21.1%	19.0%	2.0%
May	2.5%	-27.5%	-8.6%	8.1%	0.6%	-8.8%	1.8%	13.5%
Jun	9.6%	-25.8%	-11.5%	3.8%	-8.4%	-13.8%	1.4%	20.4%
Jul	3.6%	-25.4%	-1.8%	-13.6%	4.7%	-7.2%	-2.6%	-0.4%
Aug	28.7%	-31.6%	2.5%	-4.5%	-7.6%	-16.1%	44.4%	8.2%
Sep	12.6%	-50.4%	37.6%	6.5%	4.2%	-71.8%	330.1%	-0.5%
Oct	-3.1%	-24.2%	3.3%	12.9%	-1.2%	-45.8%	105.2%	5.6%
Nov	0.2%	-28.2%	16.0%	-12.2%	12.2%	-11.6%	4.3%	24.3%
Dec	34.6%	-31.3%	-2.5%	-18.5%	36.4%	-10.2%	20.2%	23.6%
Total	10.4%	-18.4%	-6.5%	-5.2%	11.7%	-11.5%	11.7%	9.7%

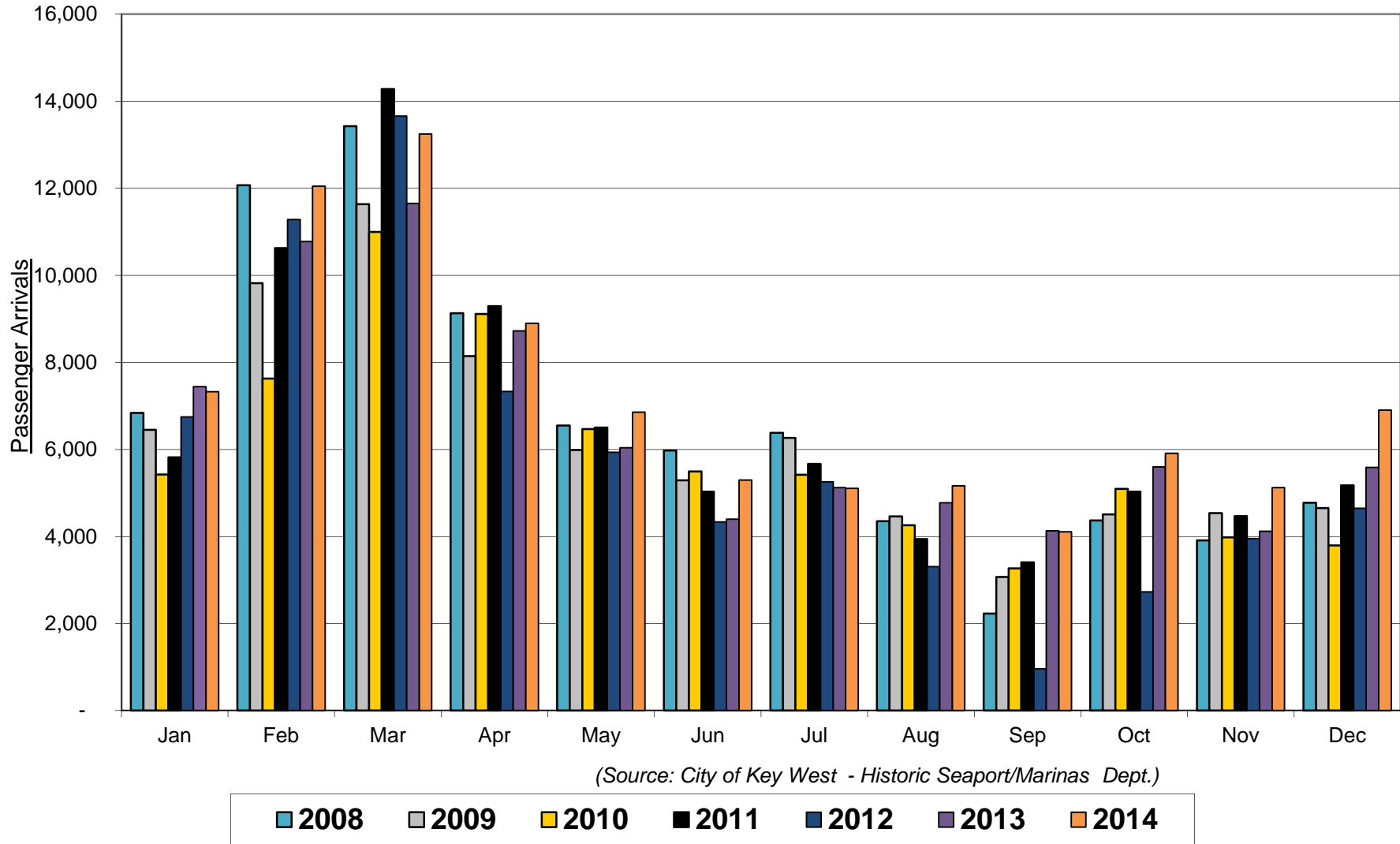
**Key West Ferry Data - Passenger Counts**

**Year-to-Date Percentage Change from Prior Year**

*(Source: City of Key West - Historic Seaport/Marinas Dept.)*

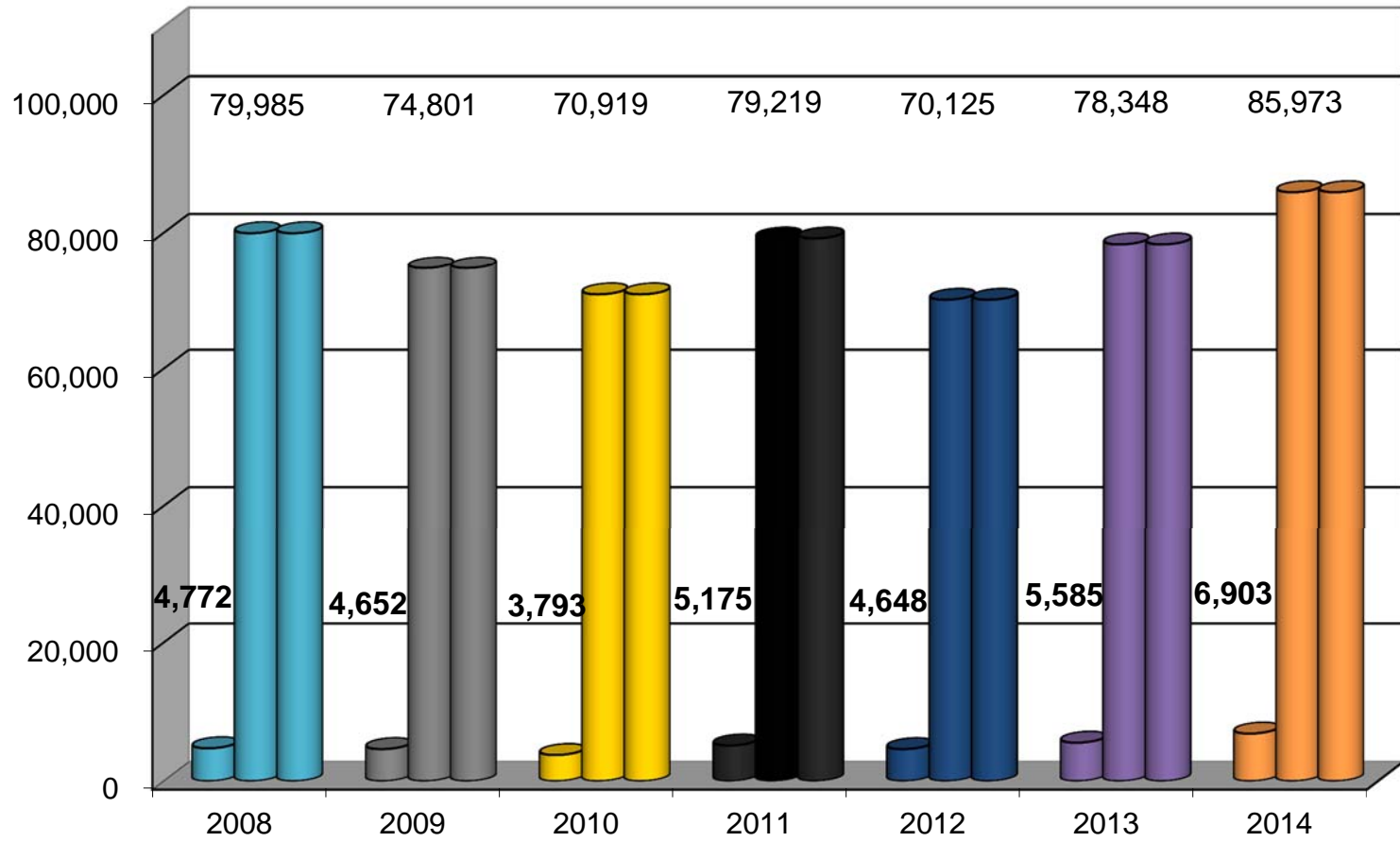
Month	2007	2008	2009	2010	2011	2012	2013	2014
Jan	25.5%	-8.9%	-5.7%	-15.9%	7.3%	16.0%	10.3%	-1.6%
Feb	17.9%	6.0%	-14.0%	-19.8%	26.0%	9.7%	1.0%	6.3%
Mar	17.9%	-3.3%	-13.7%	-13.8%	27.8%	3.1%	-5.7%	9.2%
Apr	14.8%	-6.7%	-13.1%	-8.0%	20.7%	-2.5%	-1.1%	7.6%
May	12.6%	-10.3%	-12.5%	-5.7%	17.4%	-3.4%	-0.7%	8.4%
Jun	12.2%	-12.3%	-12.4%	-4.7%	14.2%	-4.4%	-0.5%	9.5%
Jul	11.0%	-13.9%	-11.2%	-5.7%	13.2%	-4.7%	-0.7%	8.5%
Aug	12.3%	-15.4%	-10.3%	-5.6%	11.6%	-5.4%	1.9%	8.5%
Sep	12.3%	-17.3%	-8.7%	-5.0%	11.2%	-8.9%	7.2%	7.9%
Oct	11.1%	-17.8%	-8.0%	-3.8%	10.2%	-11.6%	11.6%	7.7%
Nov	10.4%	-18.4%	-6.7%	-4.3%	10.3%	-11.6%	11.1%	8.7%
Dec	11.8%	-19.3%	-6.5%	-5.2%	11.7%	-11.5%	11.7%	9.7%

Key West Port Operations  
Key West Ferry Data - Passenger Counts  
Number of Passenger Arrivals 2008 - 2014





Key West Port Operations  
Ferry Passenger Arrivals  
December Month, Year-to-Date & Full Calendar Year Results 2008 - 2014



**Key West Airport Data - Passenger Counts**

**Number of Passenger Arrivals by Plane**

*(Source: Key West International Airport)*

Month	1999	2000	2001	2002	2003	2004	2005	2006	2007	2008	2009	2010	2011	2012	2013	2014
Jan	21,640	23,613	25,138	20,671	22,862	25,582	25,972	26,897	24,721	22,050	20,528	24,460	26,756	32,536	33,541	37,639
Feb	25,183	26,053	26,113	24,436	27,407	27,998	32,350	27,724	25,187	24,767	21,780	26,581	27,928	34,528	33,973	37,075
Mar	28,179	29,082	28,644	28,343	30,113	30,412	37,193	31,128	29,356	26,692	25,435	29,734	35,593	37,422	41,670	45,381
Apr	26,226	24,152	26,144	23,651	26,923	28,372	33,918	26,676	26,116	22,645	24,184	25,910	34,901	33,133	35,119	39,496
May	26,914	24,741	25,889	23,321	25,285	26,323	29,352	26,282	24,998	21,016	19,625	22,434	28,299	31,248	33,454	37,284
Jun	20,676	21,676	20,397	20,157	21,923	23,171	25,470	22,536	20,254	16,724	17,928	19,658	26,308	29,294	30,985	24,859
Jul	20,517	20,374	19,035	18,999	22,725	23,924	22,054	20,796	19,958	15,697	17,510	19,046	26,898	30,428	30,060	23,579
Aug	18,032	19,249	19,149	18,168	20,878	19,272	19,573	15,297	17,280	12,671	14,781	18,800	24,012	25,305	28,652	21,509
Sep	15,862	15,876	10,809	12,823	15,682	11,874	16,639	13,565	13,060	8,004	11,162	16,800	20,157	23,382	22,533	18,298
Oct	21,289	23,001	18,059	21,487	24,081	24,026	15,394	20,176	20,126	15,243	16,776	22,959	24,261	28,809	30,377	22,835
Nov	24,483	24,222	17,249	23,797	23,885	25,231	29,195	22,419	21,643	17,538	17,545	24,449	27,688	27,826	30,628	23,267
Dec	19,939	23,347	19,224	23,461	25,069	25,316	26,759	22,658	21,089	19,151	22,059	27,135	31,177	33,704	38,002	28,946
<b>Total</b>	<b>268,940</b>	<b>275,386</b>	<b>255,850</b>	<b>259,314</b>	<b>286,833</b>	<b>291,501</b>	<b>313,869</b>	<b>276,154</b>	<b>263,788</b>	<b>222,198</b>	<b>229,313</b>	<b>277,966</b>	<b>333,978</b>	<b>367,615</b>	<b>388,994</b>	<b>360,168</b>

**Key West Airport Data - Passenger Counts**

**Percentage Change from Prior Year**

*(Source: Key West International Airport)*

Month	1999	2000	2001	2002	2003	2004	2005	2006	2007	2008	2009	2010	2011	2012	2013	2014
Jan	-8.6%	9.1%	6.5%	-17.8%	10.6%	11.9%	1.5%	3.6%	-8.1%	-10.8%	-6.9%	19.2%	9.4%	21.6%	3.1%	12.2%
Feb	-2.5%	3.5%	0.2%	-6.4%	12.2%	2.2%	15.5%	-14.3%	-9.2%	-1.7%	-12.1%	22.0%	5.1%	23.6%	-1.6%	9.1%
Mar	3.2%	3.2%	-1.5%	-1.1%	6.2%	1.0%	22.3%	-16.3%	-5.7%	-9.1%	-4.7%	16.9%	19.7%	5.1%	11.4%	8.9%
Apr	7.8%	-7.9%	8.2%	-9.5%	13.8%	5.4%	19.5%	-21.4%	-2.1%	-13.3%	6.8%	7.1%	34.7%	-5.1%	6.0%	12.5%
May	11.4%	-8.1%	4.6%	-9.9%	8.4%	4.1%	11.5%	-10.5%	-4.9%	-15.9%	-6.6%	14.3%	26.1%	10.4%	7.1%	11.4%
Jun	-2.2%	4.8%	-5.9%	-1.2%	8.8%	5.7%	9.9%	-11.5%	-10.1%	-17.4%	7.2%	9.6%	33.8%	11.4%	5.8%	-19.8%
Jul	7.1%	-0.7%	-6.6%	-0.2%	19.6%	5.3%	-7.8%	-5.7%	-4.0%	-21.3%	11.5%	8.8%	41.2%	13.1%	-1.2%	-21.6%
Aug	-0.9%	6.7%	-0.5%	-5.1%	14.9%	-7.7%	1.6%	-21.8%	13.0%	-26.7%	16.7%	27.2%	27.7%	5.4%	13.2%	-24.9%
Sep	18.2%	0.1%	-31.9%	18.6%	22.3%	-24.3%	40.1%	-18.5%	-3.7%	-38.7%	39.5%	50.5%	20.0%	16.0%	-3.6%	-18.8%
Oct	14.9%	8.0%	-21.5%	19.0%	12.1%	-0.2%	-35.9%	31.1%	-0.2%	-24.3%	10.1%	36.9%	5.7%	18.7%	5.4%	-24.8%
Nov	21.3%	-1.1%	-28.8%	38.0%	0.4%	5.6%	15.7%	-23.2%	-3.5%	-19.0%	0.0%	39.4%	13.2%	0.5%	10.1%	-24.0%
Dec	-8.0%	17.1%	-17.7%	22.0%	6.9%	1.0%	5.7%	-15.3%	-6.9%	-9.2%	15.2%	23.0%	14.9%	8.1%	12.8%	-23.8%
<b>Total</b>	<b>4.4%</b>	<b>2.4%</b>	<b>-7.1%</b>	<b>1.4%</b>	<b>10.6%</b>	<b>1.6%</b>	<b>7.7%</b>	<b>-12.0%</b>	<b>-4.5%</b>	<b>-15.8%</b>	<b>3.2%</b>	<b>21.2%</b>	<b>20.2%</b>	<b>10.1%</b>	<b>5.8%</b>	<b>-7.4%</b>

**Key West Airport Data - Passenger Counts**

**Year-to-Date Number of Passenger Arrivals by Plane**

*(Source: Key West International Airport)*

Month	1999	2000	2001	2002	2003	2004	2005	2006	2007	2008	2009	2010	2011	2012	2013	2014
Jan	21,640	23,613	25,138	20,671	22,862	25,582	25,972	26,897	24,721	22,050	20,528	24,460	26,756	32,536	33,541	37,639
Feb	46,823	49,666	51,251	45,107	50,269	53,580	58,322	54,621	49,908	46,817	42,308	51,041	54,684	67,064	67,514	74,714
Mar	75,002	78,748	79,895	73,450	80,382	83,992	95,515	85,749	79,264	73,509	67,743	80,775	90,277	104,486	109,184	120,095
Apr	101,228	102,900	106,039	97,101	107,305	112,364	129,433	112,425	105,380	96,154	91,927	106,685	125,178	137,619	144,303	159,591
May	128,142	127,641	131,928	120,422	132,590	138,687	158,785	138,707	130,378	117,170	111,552	129,119	153,477	168,867	177,757	196,875
Jun	148,818	149,317	152,325	140,579	154,513	161,858	184,255	161,243	150,632	133,894	129,480	148,777	179,785	198,161	208,742	221,734
Jul	169,335	169,691	171,360	159,578	177,238	185,782	206,309	182,039	170,590	149,591	146,990	167,823	206,683	228,589	238,802	245,313
Aug	187,367	188,940	190,509	177,746	198,116	205,054	225,882	197,336	187,870	162,262	161,771	186,623	230,695	253,894	267,454	266,822
Sep	203,229	204,816	201,318	190,569	213,798	216,928	242,521	210,901	200,930	170,266	172,933	203,423	250,852	277,276	289,987	285,120
Oct	224,518	227,817	219,377	212,056	237,879	240,954	257,915	231,077	221,056	185,509	189,709	226,382	275,113	306,085	320,364	307,955
Nov	249,001	252,039	236,626	235,853	261,764	266,185	287,110	253,496	242,699	203,047	207,254	250,831	302,801	333,911	350,992	331,222
Dec	268,940	275,386	255,850	259,314	286,833	291,501	313,869	276,154	263,788	222,198	229,313	277,966	333,978	367,615	388,994	360,168

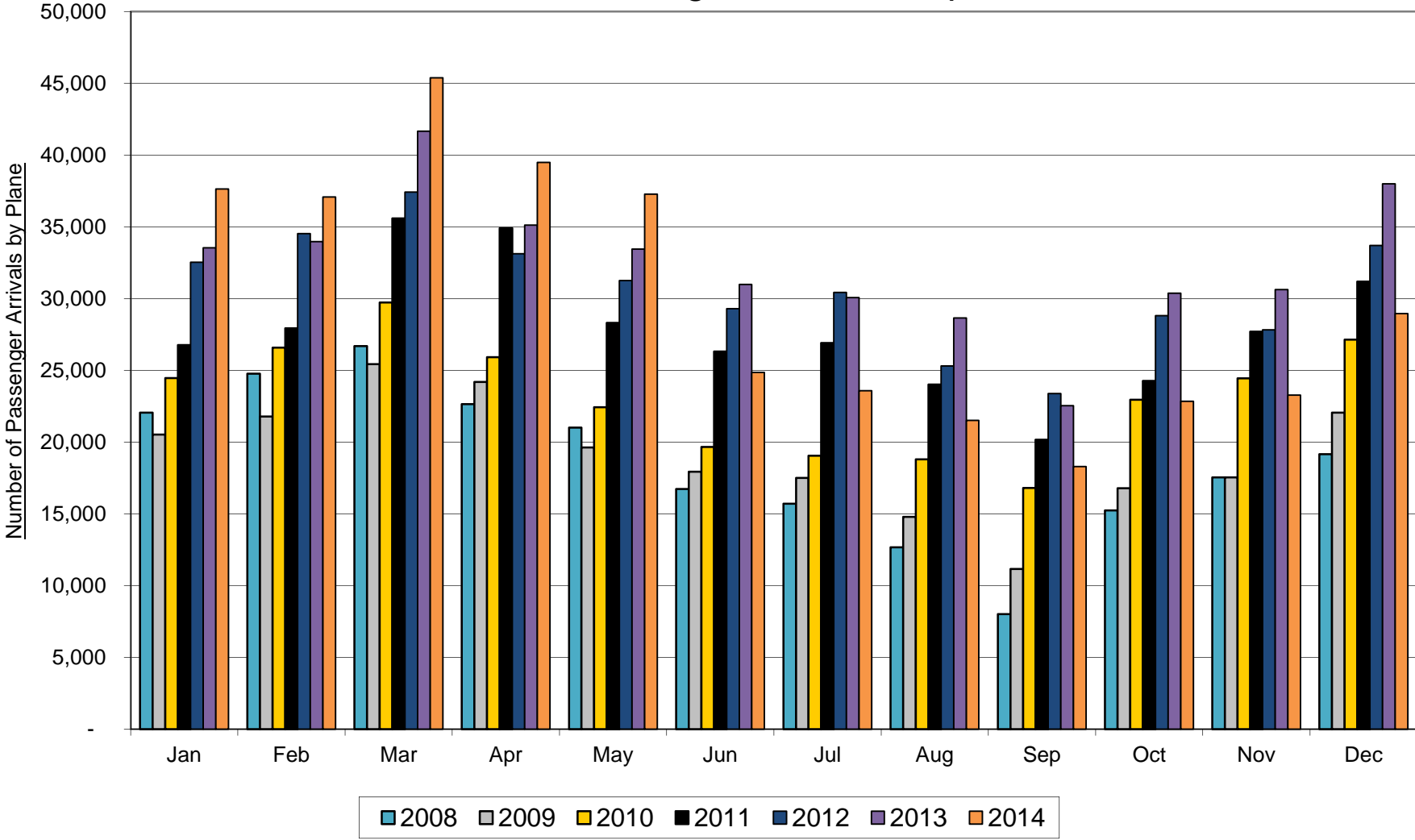
**Key West Airport Data - Passenger Counts**

**Year-to-Date Percentage Change from Prior Year**

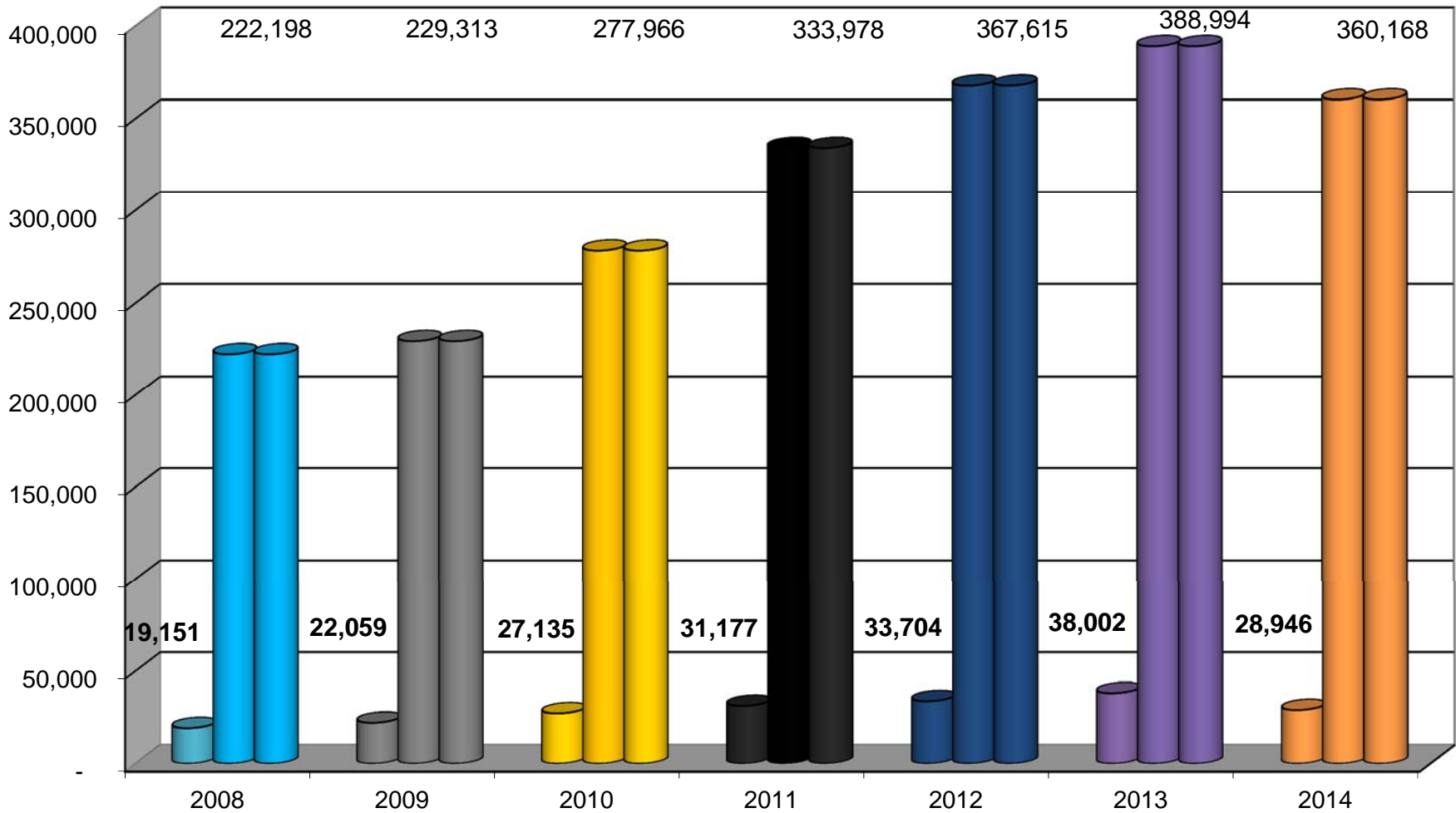
*(Source: Key West International Airport)*

Month	1999	2000	2001	2002	2003	2004	2005	2006	2007	2008	2009	2010	2011	2012	2013	2014
Jan	-8.6%	9.1%	6.5%	-17.8%	10.6%	11.9%	1.5%	3.6%	-8.1%	-10.8%	-6.9%	19.2%	9.4%	21.6%	3.1%	12.2%
Feb	-5.4%	6.1%	3.2%	-12.0%	11.4%	6.6%	8.9%	-6.3%	-8.6%	-6.2%	-9.6%	20.6%	7.1%	22.6%	0.7%	10.7%
Mar	-2.3%	5.0%	1.5%	-8.1%	9.4%	4.5%	13.7%	-10.2%	-7.6%	-7.3%	-7.8%	19.2%	11.8%	15.7%	4.5%	10.0%
Apr	0.1%	1.7%	3.1%	-8.4%	10.5%	4.7%	15.2%	-13.1%	-6.3%	-8.8%	-4.4%	16.1%	17.3%	9.9%	4.9%	10.6%
May	2.3%	-0.4%	3.4%	-8.7%	10.1%	4.6%	14.5%	-12.6%	-6.0%	-10.1%	-4.8%	15.7%	18.9%	10.0%	5.3%	10.8%
Jun	1.6%	0.3%	2.0%	-7.7%	9.9%	4.8%	13.8%	-12.5%	-6.6%	-11.1%	-3.3%	14.9%	20.8%	10.2%	5.3%	6.2%
Jul	2.3%	0.2%	1.0%	-6.9%	11.1%	4.8%	11.0%	-11.8%	-6.3%	-12.3%	-1.7%	14.2%	23.2%	10.6%	4.5%	2.7%
Aug	2.0%	0.8%	0.8%	-6.7%	11.5%	3.5%	10.2%	-12.6%	-4.8%	-13.6%	-0.3%	15.4%	23.6%	10.1%	5.3%	-0.2%
Sep	3.1%	0.8%	-1.7%	-5.3%	12.2%	1.5%	11.8%	-13.0%	-4.7%	-15.3%	1.6%	17.6%	23.3%	10.5%	4.6%	-1.7%
Oct	4.1%	1.5%	-3.7%	-3.3%	12.2%	1.3%	7.0%	-10.4%	-4.3%	-16.1%	2.3%	19.3%	21.5%	11.3%	4.7%	-3.9%
Nov	5.6%	1.2%	-6.1%	-0.3%	11.0%	1.7%	7.9%	-11.7%	-4.3%	-16.3%	2.1%	21.0%	20.7%	10.3%	5.1%	-5.6%
Dec	4.4%	2.4%	-7.1%	1.4%	10.6%	1.6%	7.7%	-12.0%	-4.5%	-15.8%	3.2%	21.2%	20.2%	10.1%	5.8%	-7.4%

Key West International Airport  
Number of Passenger Arrivals per Month  
2008 - 2014 Passenger Count Comparison



Key West International Airport - Passenger Arrivals  
December Month, Year-to-Date & Full Calendar Year  
2008 - 2014



**Key West Bed Tax Data - Four Penny Collection of Bed Tax** (See Note Below)

**Bed Tax Collected**

(Source: Monroe County Tax Collector's Office)

Month	2000	2001	2002	2003	2004	2005	2006	2007	2008	2009	2010	2011	2012	2013	2014
Jan	\$ 642,613	\$ 686,975	\$ 598,955	\$ 632,436	\$ 719,802	\$ 752,960	\$ 764,678	\$ 753,349	\$ 817,090	\$ 785,983	\$ 1,083,058	\$ 1,145,675	\$ 1,375,989	\$ 1,527,313	\$ 1,737,534
Feb	\$ 734,980	\$ 760,032	\$ 746,450	\$ 756,310	\$ 890,024	\$ 872,964	\$ 835,180	\$ 860,734	\$ 968,999	\$ 866,176	\$ 1,272,590	\$ 1,380,202	\$ 1,607,297	\$ 1,691,438	\$ 1,889,755
Mar	\$ 818,651	\$ 880,902	\$ 909,000	\$ 877,046	\$ 942,690	\$ 1,057,758	\$ 967,498	\$ 985,397	\$ 1,103,404	\$ 958,232	\$ 1,483,771	\$ 1,704,052	\$ 1,915,278	\$ 2,046,344	\$ 2,156,622
Apr	\$ 599,621	\$ 636,381	\$ 603,332	\$ 651,585	\$ 737,040	\$ 748,230	\$ 779,778	\$ 796,705	\$ 816,302	\$ 808,724	\$ 1,192,659	\$ 1,405,623	\$ 1,431,512	\$ 1,496,474	\$ 1,667,567
May	\$ 493,623	\$ 548,426	\$ 525,462	\$ 595,808	\$ 590,594	\$ 640,488	\$ 666,900	\$ 658,212	\$ 724,698	\$ 678,054	\$ 992,116	\$ 1,124,586	\$ 1,229,340	\$ 1,328,473	\$ 1,500,299
Jun	\$ 401,214	\$ 455,134	\$ 429,148	\$ 448,366	\$ 510,515	\$ 567,089	\$ 564,056	\$ 574,856	\$ 582,443	\$ 749,657	\$ 789,439	\$ 964,425	\$ 1,088,132	\$ 1,148,264	\$ 1,215,650
Jul	\$ 432,309	\$ 492,120	\$ 475,633	\$ 528,302	\$ 608,040	\$ 533,725	\$ 586,050	\$ 588,030	\$ 634,553	\$ 828,830	\$ 854,038	\$ 1,106,614	\$ 1,174,147	\$ 1,245,932	\$ 1,296,708
Aug	\$ 358,022	\$ 415,603	\$ 411,632	\$ 468,752	\$ 386,955	\$ 400,262	\$ 357,942	\$ 467,980	\$ 485,705	\$ 675,302	\$ 654,353	\$ 842,738	\$ 884,046	\$ 1,054,522	\$ 1,167,976
Sep	\$ 310,134	\$ 263,946	\$ 282,570	\$ 299,847	\$ 237,016	\$ 302,582	\$ 323,366	\$ 386,574	\$ 263,462	\$ 491,509	\$ 526,867	\$ 669,914	\$ 729,566	\$ 765,583	\$ 810,563
Oct	\$ 432,974	\$ 422,911	\$ 457,442	\$ 525,671	\$ 530,944	\$ 252,984	\$ 472,715	\$ 534,464	\$ 542,332	\$ 758,370	\$ 817,899	\$ 987,873	\$ 1,069,560	\$ 1,182,778	\$ 1,264,623
Nov	\$ 481,417	\$ 373,147	\$ 449,808	\$ 496,357	\$ 539,555	\$ 488,967	\$ 517,258	\$ 602,065	\$ 557,221	\$ 815,867	\$ 855,692	\$ 1,073,227	\$ 1,118,319	\$ 1,243,851	\$ 1,329,048
Dec	\$ 522,618	\$ 489,537	\$ 530,250	\$ 569,840	\$ 578,197	\$ 602,177	\$ 586,154	\$ 686,112	\$ 675,493	\$ 974,022	\$ 970,308	\$ 1,169,583	\$ 1,254,977	\$ 1,487,642	\$ 1,628,408
<b>Total</b>	<b>\$ 6,228,176</b>	<b>\$ 6,425,114</b>	<b>\$ 6,419,684</b>	<b>\$ 6,850,321</b>	<b>\$ 7,271,371</b>	<b>\$ 7,220,187</b>	<b>\$ 7,421,576</b>	<b>\$ 7,894,480</b>	<b>\$ 8,171,702</b>	<b>\$ 9,390,726</b>	<b>\$ 11,492,790</b>	<b>\$ 13,574,510</b>	<b>\$ 14,878,163</b>	<b>\$ 16,218,614</b>	<b>\$ 17,664,753</b>

(Note : Monroe County Three-Penny Bed Tax increased to Four Pennies as of June 1, 2009)

**Key West Bed Tax Data - Four Penny Collection of Bed Tax** (See Note Above)

**Percentage Change from Prior Year**

(Source: Monroe County Tax Collector's Office)

Month	2000	2001	2002	2003	2004	2005	2006	2007	2008	2009	2010	2011	2012	2013	2014
Jan	8.9%	6.9%	-12.8%	5.6%	13.8%	4.6%	1.6%	-1.5%	8.5%	-3.8%	37.8%	5.8%	20.1%	11.0%	13.8%
Feb	12.8%	3.4%	-1.8%	1.3%	17.7%	-1.9%	-4.3%	3.1%	12.6%	-10.6%	46.9%	8.5%	16.5%	5.2%	11.7%
Mar	9.6%	7.6%	3.2%	-3.5%	7.5%	12.2%	-8.5%	1.9%	12.0%	-13.2%	54.8%	14.8%	12.4%	6.8%	5.4%
Apr	1.9%	6.1%	-5.2%	8.0%	13.1%	1.5%	4.2%	2.2%	2.5%	-0.9%	47.5%	17.9%	1.8%	4.5%	11.4%
May	2.3%	11.1%	-4.2%	13.4%	-0.9%	8.4%	4.1%	-1.3%	10.1%	-6.4%	46.3%	13.4%	9.3%	8.1%	12.9%
Jun	4.9%	13.4%	-5.7%	4.5%	13.9%	11.1%	-0.5%	1.9%	1.3%	28.7%	5.3%	22.2%	12.8%	5.5%	5.9%
Jul	1.1%	13.8%	-3.4%	11.1%	15.1%	-12.2%	9.8%	0.3%	7.9%	30.6%	3.0%	29.6%	6.1%	6.1%	4.1%
Aug	-7.5%	16.1%	-1.0%	13.9%	-17.4%	3.4%	-10.6%	30.7%	3.8%	39.0%	-3.1%	28.8%	4.9%	19.3%	10.8%
Sep	6.9%	-14.9%	7.1%	6.1%	-21.0%	27.7%	6.9%	19.5%	-31.8%	86.6%	7.2%	27.2%	8.9%	4.9%	5.9%
Oct	6.8%	-2.3%	8.2%	14.9%	1.0%	-52.4%	86.9%	13.1%	1.5%	39.8%	7.8%	20.8%	8.3%	10.6%	6.9%
Nov	9.1%	-22.5%	20.5%	10.3%	8.7%	-9.4%	5.8%	16.4%	-7.4%	46.4%	4.9%	25.4%	4.2%	11.2%	6.8%
Dec	12.3%	-6.3%	8.3%	7.5%	1.5%	4.1%	-2.7%	17.1%	-1.5%	44.2%	-0.4%	20.5%	7.3%	18.5%	9.5%
<b>Total</b>	<b>6.3%</b>	<b>3.2%</b>	<b>-0.1%</b>	<b>6.7%</b>	<b>6.1%</b>	<b>-0.7%</b>	<b>2.8%</b>	<b>6.4%</b>	<b>3.5%</b>	<b>14.9%</b>	<b>22.4%</b>	<b>18.1%</b>	<b>9.6%</b>	<b>9.0%</b>	<b>8.9%</b>

**Key West Bed Tax Data - Four Penny Collection of Bed Tax** (See Note Below)

**Year-to-Date Bed Tax Collected**

(Source: Monroe County Tax Collector's Office)

Month	2000	2001	2002	2003	2004	2005	2006	2007	2008	2009	2010	2011	2012	2013	2014
Jan	\$ 642,613	\$ 686,975	\$ 598,955	\$ 632,436	\$ 719,802	\$ 752,960	\$ 764,678	\$ 753,349	\$ 817,090	\$ 785,983	\$ 1,083,058	\$ 1,145,675	\$ 1,375,989	\$ 1,527,313	\$ 1,737,534
Feb	\$ 1,377,593	\$ 1,447,007	\$ 1,345,405	\$ 1,388,746	\$ 1,609,826	\$ 1,625,924	\$ 1,599,859	\$ 1,614,084	\$ 1,786,089	\$ 1,652,159	\$ 2,355,648	\$ 2,525,876	\$ 2,983,286	\$ 3,218,751	\$ 3,627,289
Mar	\$ 2,196,244	\$ 2,327,909	\$ 2,254,405	\$ 2,265,792	\$ 2,552,516	\$ 2,683,683	\$ 2,567,356	\$ 2,599,481	\$ 2,889,493	\$ 2,610,391	\$ 3,839,419	\$ 4,229,928	\$ 4,898,564	\$ 5,265,096	\$ 5,783,911
Apr	\$ 2,795,865	\$ 2,964,291	\$ 2,857,737	\$ 2,917,377	\$ 3,289,555	\$ 3,431,913	\$ 3,347,134	\$ 3,396,186	\$ 3,705,795	\$ 3,419,115	\$ 5,032,079	\$ 5,635,551	\$ 6,330,075	\$ 6,761,570	\$ 7,451,479
May	\$ 3,289,488	\$ 3,512,717	\$ 3,383,199	\$ 3,513,185	\$ 3,880,149	\$ 4,072,401	\$ 4,014,034	\$ 4,054,398	\$ 4,430,492	\$ 4,097,169	\$ 6,024,195	\$ 6,760,136	\$ 7,559,416	\$ 8,090,043	\$ 8,951,778
Jun	\$ 3,690,702	\$ 3,967,851	\$ 3,812,348	\$ 3,961,551	\$ 4,390,664	\$ 4,639,490	\$ 4,578,091	\$ 4,629,254	\$ 5,012,935	\$ 4,846,827	\$ 6,813,633	\$ 7,724,561	\$ 8,647,548	\$ 9,238,307	\$ 10,167,427
Jul	\$ 4,123,011	\$ 4,459,970	\$ 4,287,981	\$ 4,489,853	\$ 4,998,704	\$ 5,173,216	\$ 5,164,141	\$ 5,217,285	\$ 5,647,488	\$ 5,675,657	\$ 7,667,671	\$ 8,831,176	\$ 9,821,695	\$ 10,484,239	\$ 11,464,136
Aug	\$ 4,481,033	\$ 4,875,574	\$ 4,699,613	\$ 4,958,605	\$ 5,385,659	\$ 5,573,477	\$ 5,522,083	\$ 5,685,265	\$ 6,133,194	\$ 6,350,959	\$ 8,322,024	\$ 9,673,914	\$ 10,705,741	\$ 11,538,761	\$ 12,632,112
Sep	\$ 4,791,167	\$ 5,139,519	\$ 4,982,183	\$ 5,258,452	\$ 5,622,675	\$ 5,876,059	\$ 5,845,448	\$ 6,071,839	\$ 6,396,655	\$ 6,842,468	\$ 8,848,892	\$ 10,343,827	\$ 11,435,307	\$ 12,304,343	\$ 13,442,675
Oct	\$ 5,224,141	\$ 5,562,430	\$ 5,439,625	\$ 5,784,124	\$ 6,153,619	\$ 6,129,044	\$ 6,318,164	\$ 6,606,303	\$ 6,938,988	\$ 7,600,838	\$ 9,666,790	\$ 11,331,700	\$ 12,504,867	\$ 13,487,121	\$ 14,707,297
Nov	\$ 5,705,558	\$ 5,935,577	\$ 5,889,434	\$ 6,280,481	\$ 6,693,174	\$ 6,618,010	\$ 6,835,422	\$ 7,208,368	\$ 7,496,209	\$ 8,416,705	\$ 10,522,482	\$ 12,404,927	\$ 13,623,186	\$ 14,730,972	\$ 16,036,346
Dec	\$ 6,228,176	\$ 6,425,114	\$ 6,419,684	\$ 6,850,321	\$ 7,271,371	\$ 7,220,187	\$ 7,421,576	\$ 7,894,480	\$ 8,171,702	\$ 9,390,726	\$ 11,492,790	\$ 13,574,510	\$ 14,878,163	\$ 16,218,614	\$ 17,664,753

(Note: Monroe County Three-Penny Bed Tax increased to Four Pennies as of June 1, 2009)

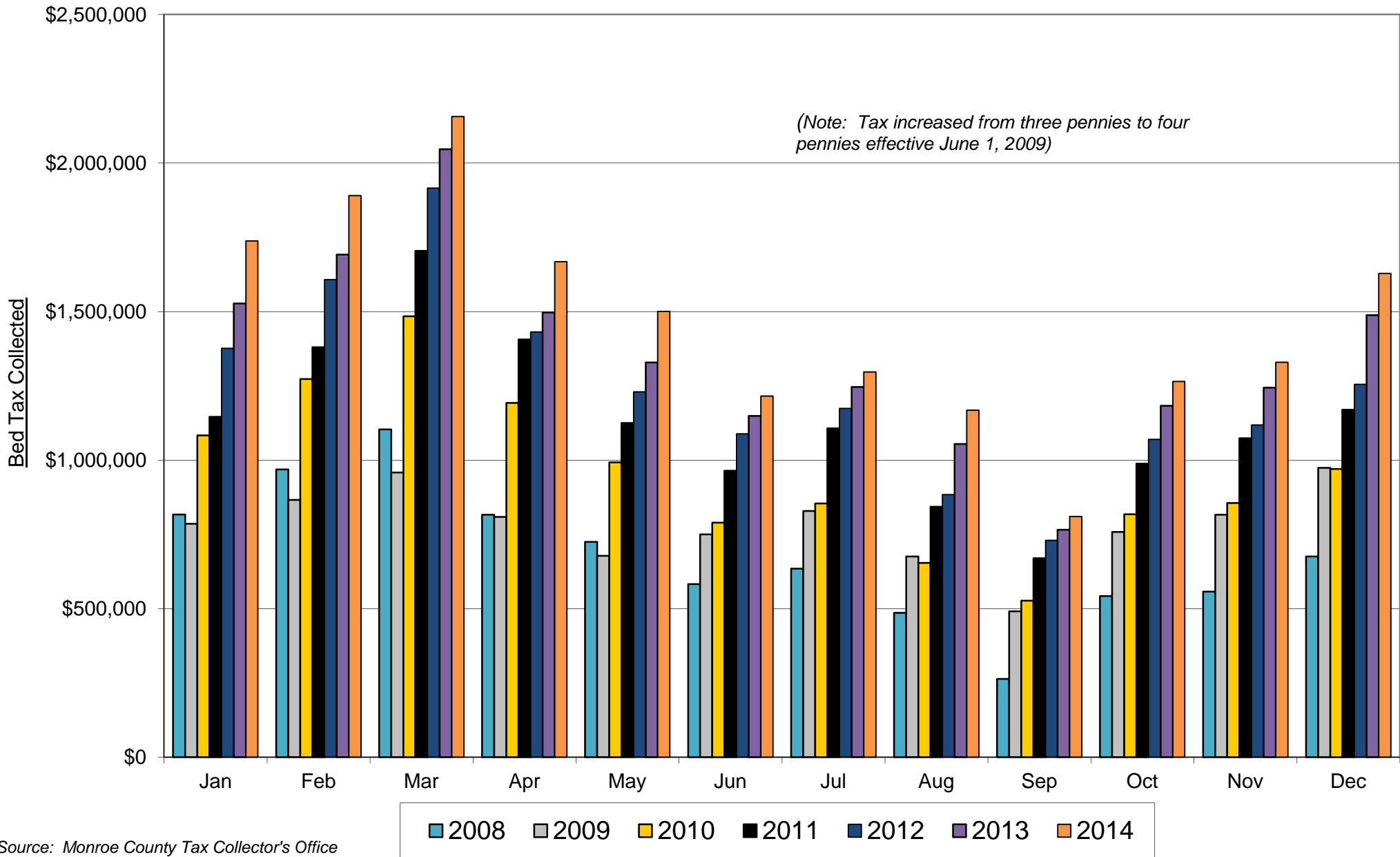
**Key West Bed Tax Data - Four Penny Collection of Bed Tax** (See Note Above)

**Year-to-Date Percentage Change from Prior Year**

(Source: Monroe County Tax Collector's Office)

Month	2000	2001	2002	2003	2004	2005	2006	2007	2008	2009	2010	2011	2012	2013	2014
Jan	8.9%	6.9%	-12.8%	5.6%	13.8%	4.6%	1.6%	-1.5%	8.5%	-3.8%	37.8%	5.8%	20.1%	11.0%	13.8%
Feb	10.9%	5.0%	-7.0%	3.2%	15.9%	1.0%	-1.6%	0.9%	10.7%	-7.5%	42.6%	7.2%	18.1%	7.9%	12.7%
Mar	10.5%	6.0%	-3.2%	0.5%	12.7%	5.1%	-4.3%	1.3%	11.2%	-9.7%	47.1%	10.2%	15.8%	7.5%	9.9%
Apr	8.5%	6.0%	-3.6%	2.1%	12.8%	4.3%	-2.5%	1.5%	9.1%	-7.7%	47.2%	12.0%	12.3%	6.8%	10.2%
May	7.5%	6.8%	-3.7%	3.8%	10.4%	5.0%	-1.4%	1.0%	9.3%	-7.5%	47.0%	12.2%	11.8%	7.0%	10.7%
Jun	7.2%	7.5%	-3.9%	3.9%	10.8%	5.7%	-1.3%	1.1%	8.3%	-3.3%	40.6%	13.4%	11.9%	6.8%	10.1%
Jul	6.6%	8.2%	-3.9%	4.7%	11.3%	3.5%	-0.2%	1.0%	8.2%	0.5%	35.1%	15.2%	11.2%	6.7%	9.3%
Aug	5.3%	8.8%	-3.6%	5.5%	8.6%	3.5%	-0.9%	3.0%	7.9%	3.6%	31.0%	16.2%	10.7%	7.8%	9.5%
Sep	5.4%	7.3%	-3.1%	5.5%	6.9%	4.5%	-0.5%	3.9%	5.3%	7.0%	29.3%	16.9%	10.6%	7.6%	9.3%
Oct	5.5%	6.5%	-2.2%	6.3%	6.4%	-0.4%	3.1%	4.6%	5.0%	9.5%	27.2%	17.2%	10.4%	7.9%	9.0%
Nov	5.8%	4.0%	-0.8%	6.6%	6.6%	-1.1%	3.3%	5.5%	4.0%	12.3%	25.0%	17.9%	9.8%	8.1%	8.9%
Dec	6.3%	3.2%	-0.1%	6.7%	6.1%	-0.7%	2.8%	6.4%	3.5%	14.9%	22.4%	18.1%	9.6%	9.0%	8.9%

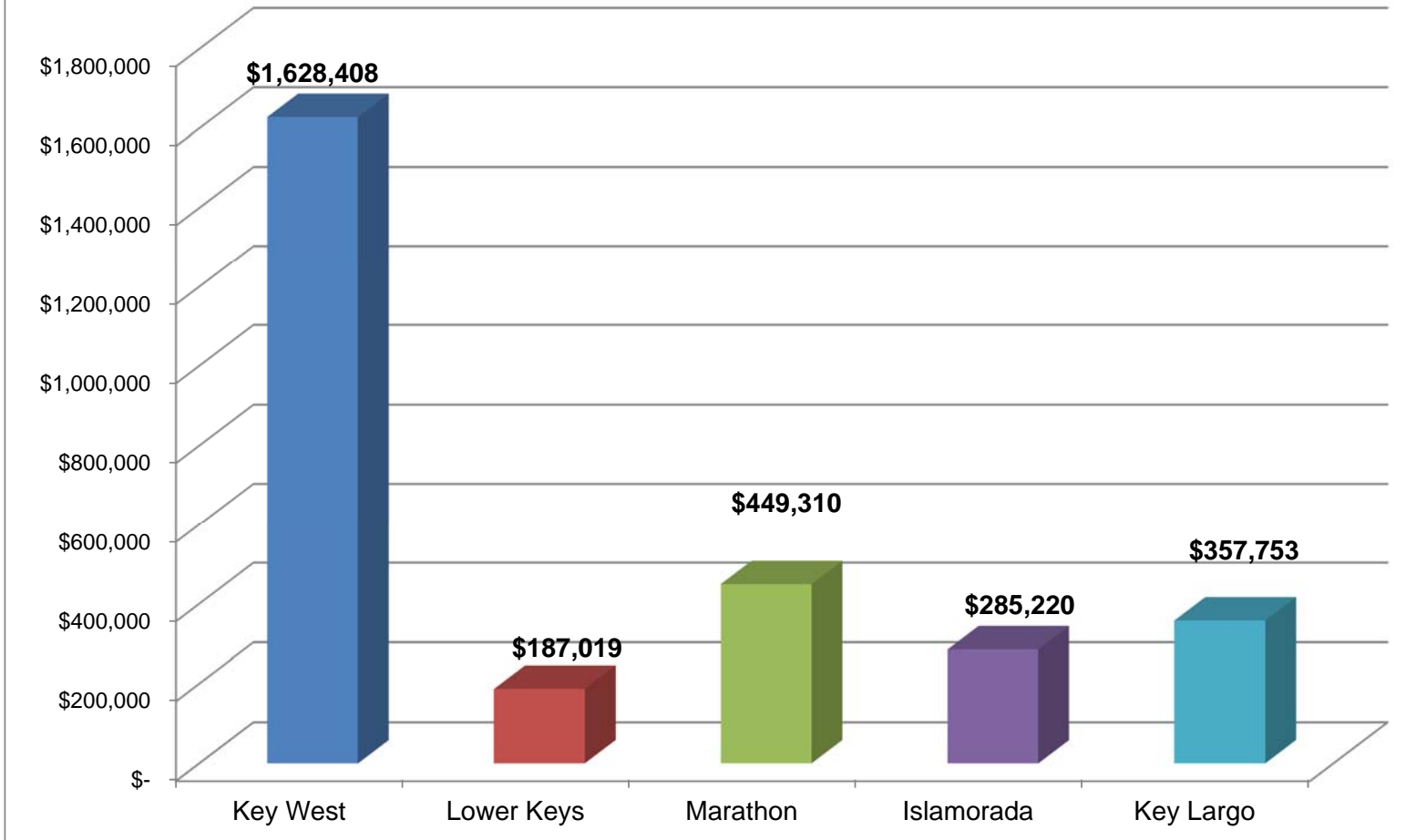
**Key West Bed Tax Data**  
**Four Penny Collection of Bed Tax per Month**  
**Comparison of Bed Tax Collected 2008 - 2014**



Source: Monroe County Tax Collector's Office



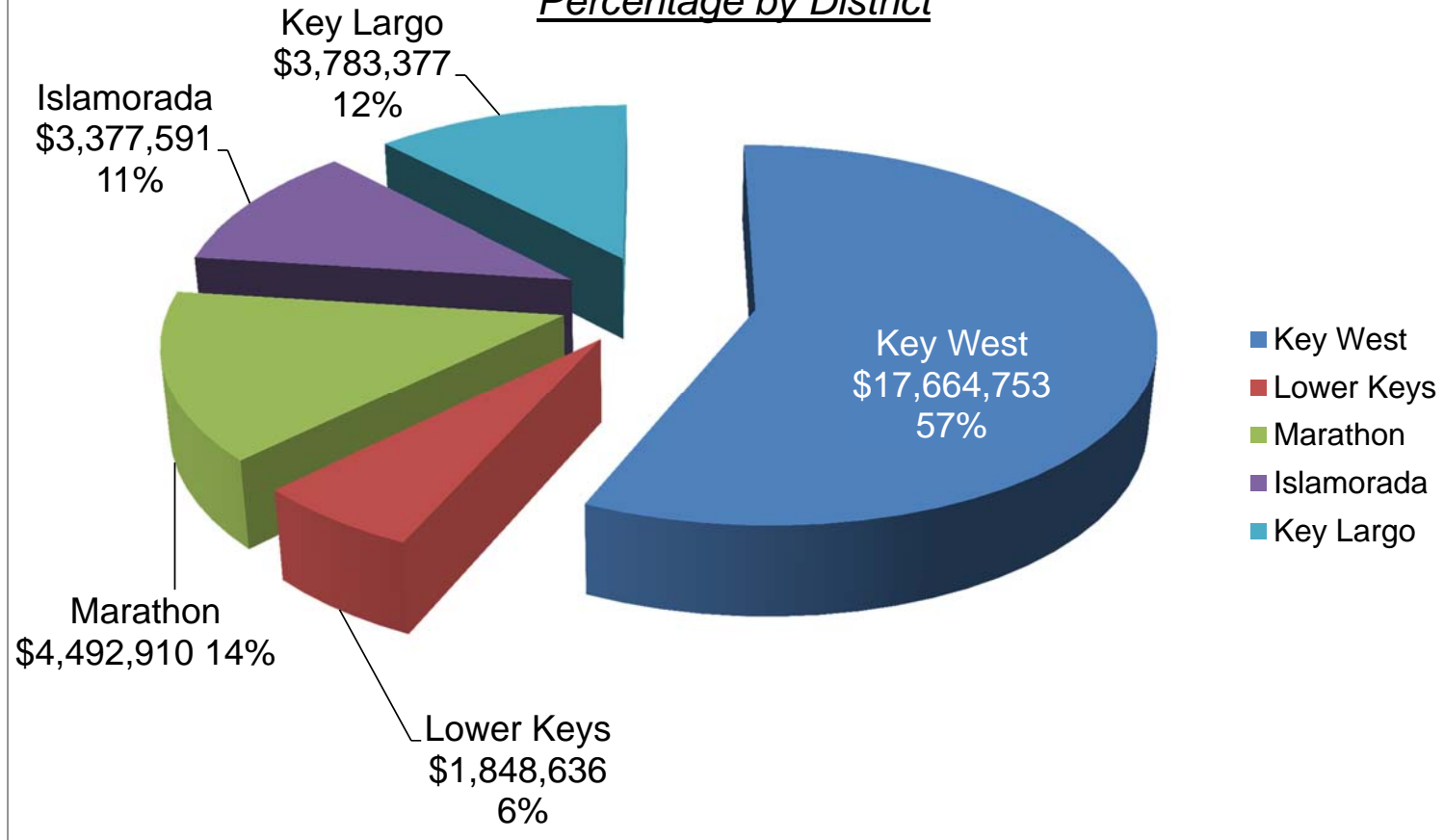
All DACs - Four Penny Bed Tax  
Collections for December 2014  
Total by District



Source: Monroe County Tax Collector

	<u>Key West</u>	<u>Lower Keys</u>	<u>Marathon</u>	<u>Islamorada</u>	<u>Key Largo</u>	<u>Total</u>
December-14	\$ 1,628,407.77	\$ 187,018.52	\$ 449,309.56	\$ 285,219.50	\$ 357,753.30	\$ 2,907,708.65

All DACs - Four Penny Bed Tax  
Collections for January - December 2014  
Percentage by District



Source: Monroe County Tax Collector

	<u>Key West</u>	<u>Lower Keys</u>	<u>Marathon</u>	<u>Islamorada</u>	<u>Key Largo</u>	<u>Total</u>
Y-T-D	\$ 17,664,753.41	\$ 1,848,636.24	\$ 4,492,910.09	\$ 3,377,591.47	\$ 3,783,376.92	\$ 31,167,268.13
	56.7%	5.9%	14.4%	10.8%	12.1%	100%

**Key West Labor Force Data - Not Seasonally Adjusted**  
**Unemployment Rate**

*(Source: U.S. Department of Labor, Bureau of Labor Statistics)*

Month	1998	1999	2000	2001	2002	2003	2004	2005	2006	2007	2008	2009	2010	2011	2012	2013	2014
Jan	3.0%	2.9%	2.6%	2.7%	4.1%	3.3%	2.8%	2.5%	2.2%	2.4%	2.7%	5.9%	6.9%	5.7%	5.1%	4.4%	3.6%
Feb	2.9%	2.8%	2.5%	2.6%	3.8%	3.1%	2.6%	2.4%	2.1%	2.3%	2.7%	6.2%	6.6%	5.7%	4.9%	4.0%	3.6%
Mar	2.7%	2.6%	2.4%	2.5%	3.6%	2.8%	2.7%	2.3%	2.1%	2.1%	2.8%	6.1%	6.3%	5.4%	4.5%	3.8%	3.6%
Apr	2.4%	2.3%	2.3%	2.5%	3.6%	2.8%	2.5%	2.1%	1.9%	2.0%	2.9%	6.4%	6.1%	5.4%	4.4%	3.8%	3.1%
May	2.4%	2.1%	2.5%	2.4%	3.4%	2.7%	2.5%	2.1%	2.0%	2.0%	3.2%	6.5%	5.5%	5.6%	4.5%	4.0%	3.3%
Jun	2.5%	2.0%	2.6%	2.7%	3.6%	3.1%	2.8%	2.3%	2.1%	2.4%	3.5%	6.9%	6.1%	6.0%	4.6%	4.1%	3.3%
Jul	2.3%	2.1%	2.5%	2.6%	3.4%	2.9%	2.7%	2.3%	2.2%	2.6%	3.9%	7.0%	6.4%	6.2%	4.8%	4.0%	3.7%
Aug	2.1%	2.1%	2.7%	2.9%	3.6%	2.9%	2.6%	2.3%	2.3%	2.6%	4.2%	6.9%	6.6%	6.0%	4.7%	3.9%	3.6%
Sep	2.2%	2.4%	2.7%	2.7%	3.5%	3.0%	2.7%	2.5%	2.5%	2.6%	4.7%	7.0%	7.1%	5.9%	4.8%	3.8%	3.5%
Oct	4.4%	2.3%	2.4%	3.9%	3.2%	2.8%	2.6%	2.1%	2.2%	2.5%	4.6%	7.0%	6.7%	5.3%	4.3%	3.7%	3.5%
Nov	3.1%	2.4%	2.5%	4.1%	3.3%	2.9%	2.6%	3.2%	2.2%	2.5%	4.6%	7.1%	6.5%	5.9%	4.5%	3.7%	3.4%
Dec	2.6%	2.0%	2.3%	4.0%	3.2%	2.6%	2.5%	2.1%	2.0%	2.4%	5.1%	6.9%	5.9%	5.8%	4.2%	3.3%	3.1%
Average	2.7%	2.3%	2.5%	3.0%	3.5%	2.9%	2.6%	2.4%	2.2%	2.4%	3.7%	6.7%	6.4%	5.8%	4.6%	3.9%	3.4%

**Key West Labor Force Data - Not Seasonally Adjusted**  
**Unemployed Persons**

*(Source: U.S. Department of Labor, Bureau of Labor Statistics)*

Month	1998	1999	2000	2001	2002	2003	2004	2005	2006	2007	2008	2009	2010	2011	2012	2013	2014
Jan	452	447	382	419	628	506	430	367	317	334	401	859	1,106	933	846	742	619
Feb	442	435	371	405	584	486	401	361	308	322	409	906	1,069	936	820	689	636
Mar	424	413	361	404	565	446	412	339	303	304	430	900	1,026	899	758	649	633
Apr	375	364	338	395	552	433	381	316	276	278	442	936	993	886	732	655	548
May	373	332	370	369	526	425	384	318	297	283	486	963	897	931	758	695	589
Jun	393	318	396	418	565	482	429	348	309	344	534	1,011	979	994	774	714	577
Jul	366	319	382	408	532	450	411	347	319	373	600	1,028	1,045	1,016	825	686	651
Aug	333	316	403	448	553	455	401	344	329	369	630	1,006	1,056	990	799	673	638
Sep	338	365	408	415	529	452	400	363	352	379	688	1,011	1,146	962	797	655	606
Oct	674	349	364	578	491	426	385	307	307	359	667	998	1,076	867	719	622	607
Nov	477	359	368	611	498	440	394	458	305	362	675	1,022	1,042	877	743	630	574
Dec	407	312	341	606	488	395	370	303	283	355	752	998	951	848	709	562	525
Average	421	361	374	456	543	450	400	348	309	339	560	970	1,032	928	773	664	600

**Key West Labor Force Data - Not Seasonally Adjusted**

**Employed Persons**

*(Source: U.S. Department of Labor, Bureau of Labor Statistics)*

Month	1998	1999	2000	2001	2002	2003	2004	2005	2006	2007	2008	2009	2010	2011	2012	2013	2014
Jan	14,856	15,221	14,499	15,151	14,623	15,055	14,869	14,559	14,107	13,812	14,694	13,639	15,024	15,343	15,784	16,310	16,691
Feb	14,996	15,340	14,566	15,195	14,859	15,248	14,965	14,643	14,239	13,921	14,809	13,721	15,154	15,514	15,915	16,341	17,025
Mar	15,207	15,457	14,737	15,466	14,954	15,456	15,036	14,723	14,379	14,083	14,975	13,813	15,362	15,644	16,102	16,543	17,179
Apr	15,061	15,286	14,630	15,247	14,903	15,212	14,916	14,572	14,189	13,929	14,825	13,793	15,321	15,629	16,053	16,610	17,193
May	15,138	15,274	14,539	15,249	14,909	15,209	14,866	14,517	14,208	14,009	14,805	13,748	15,271	15,571	16,197	16,688	17,295
Jun	15,153	15,228	14,802	15,119	14,915	15,186	14,942	14,534	14,119	14,058	14,675	13,685	15,187	15,466	16,200	16,701	16,958
Jul	15,238	15,118	14,644	15,063	14,941	15,088	15,004	14,543	14,048	14,034	14,632	13,634	15,193	15,478	16,249	16,618	16,778
Aug	15,238	14,937	14,490	14,908	14,909	14,978	14,788	14,485	13,860	14,058	14,366	13,616	15,057	15,446	16,098	16,708	16,902
Sep	14,932	14,816	14,486	14,835	14,778	14,755	14,203	14,179	13,571	14,007	14,041	13,386	14,929	15,288	15,882	16,472	16,627
Oct	14,675	14,546	14,496	14,403	14,778	14,791	14,461	14,105	13,591	13,984	13,959	13,296	14,894	15,397	15,900	16,393	16,569
Nov	15,003	14,793	14,649	14,371	14,781	14,783	14,551	13,891	13,734	14,252	14,042	13,368	15,043	15,584	15,937	16,546	16,556
Dec	15,127	14,924	14,750	14,533	14,882	14,868	14,607	14,092	13,853	14,463	13,981	13,451	15,208	15,748	16,062	16,723	16,622
Average	15,052	15,078	14,607	14,962	14,853	15,052	14,767	14,404	13,992	14,051	14,484	13,596	15,137	15,509	16,032	16,554	16,866

**Key West Labor Force Data - Not Seasonally Adjusted**

**Labor Force**

*(Source: U.S. Department of Labor, Bureau of Labor Statistics)*

Month	1998	1999	2000	2001	2002	2003	2004	2005	2006	2007	2008	2009	2010	2011	2012	2013	2014
Jan	15,308	15,668	14,881	15,570	15,251	15,561	15,299	14,926	14,424	14,146	15,095	14,498	16,130	16,276	16,630	17,052	17,310
Feb	15,438	15,775	14,937	15,600	15,443	15,734	15,366	15,004	14,547	14,243	15,218	14,627	16,223	16,450	16,735	17,030	17,661
Mar	15,631	15,870	15,098	15,870	15,519	15,902	15,448	15,062	14,682	14,387	15,405	14,713	16,388	16,543	16,860	17,192	17,812
Apr	15,436	15,650	14,968	15,642	15,455	15,645	15,297	14,888	14,465	14,207	15,267	14,729	16,314	16,515	16,785	17,265	17,741
May	15,511	15,606	14,909	15,618	15,435	15,634	15,250	14,835	14,505	14,292	15,291	14,711	16,168	16,502	16,955	17,383	17,884
Jun	15,546	15,546	15,198	15,537	15,480	15,668	15,371	14,882	14,428	14,402	15,209	14,696	16,166	16,460	16,974	17,415	17,535
Jul	15,604	15,437	15,026	15,471	15,473	15,538	15,415	14,890	14,367	14,407	15,232	14,662	16,238	16,494	17,074	17,304	17,429
Aug	15,571	15,253	14,893	15,356	15,462	15,433	15,189	14,829	14,189	14,427	14,996	14,622	16,113	16,436	16,897	17,381	17,540
Sep	15,270	15,181	14,894	15,250	15,307	15,207	14,603	14,542	13,923	14,386	14,729	14,397	16,075	16,250	16,679	17,127	17,233
Oct	15,349	14,895	14,860	14,981	15,269	15,217	14,846	14,412	13,898	14,343	14,626	14,294	15,970	16,264	16,619	17,015	17,176
Nov	15,480	15,152	15,017	14,982	15,279	15,223	14,945	14,349	14,039	14,614	14,717	14,390	16,085	16,461	16,680	17,176	17,130
Dec	15,534	15,236	15,091	15,139	15,370	15,263	14,977	14,395	14,136	14,818	14,733	14,449	16,159	16,596	16,771	17,285	17,147
Average	15,473	15,439	14,981	15,418	15,395	15,502	15,167	14,751	14,300	14,389	15,043	14,566	16,169	16,437	16,805	17,219	17,467

## **Glossary:**

**Seasonal Adjustment:** A statistical technique which eliminates the influences of weather, holidays, the opening and closing of schools, and other recurring seasonal events from economic time-series. This permits easier observation and analysis of cyclical, trend and other nonseasonal movements in the data. By eliminating seasonal fluctuations the series becomes smoother, and it is easier to compare data from month to month.

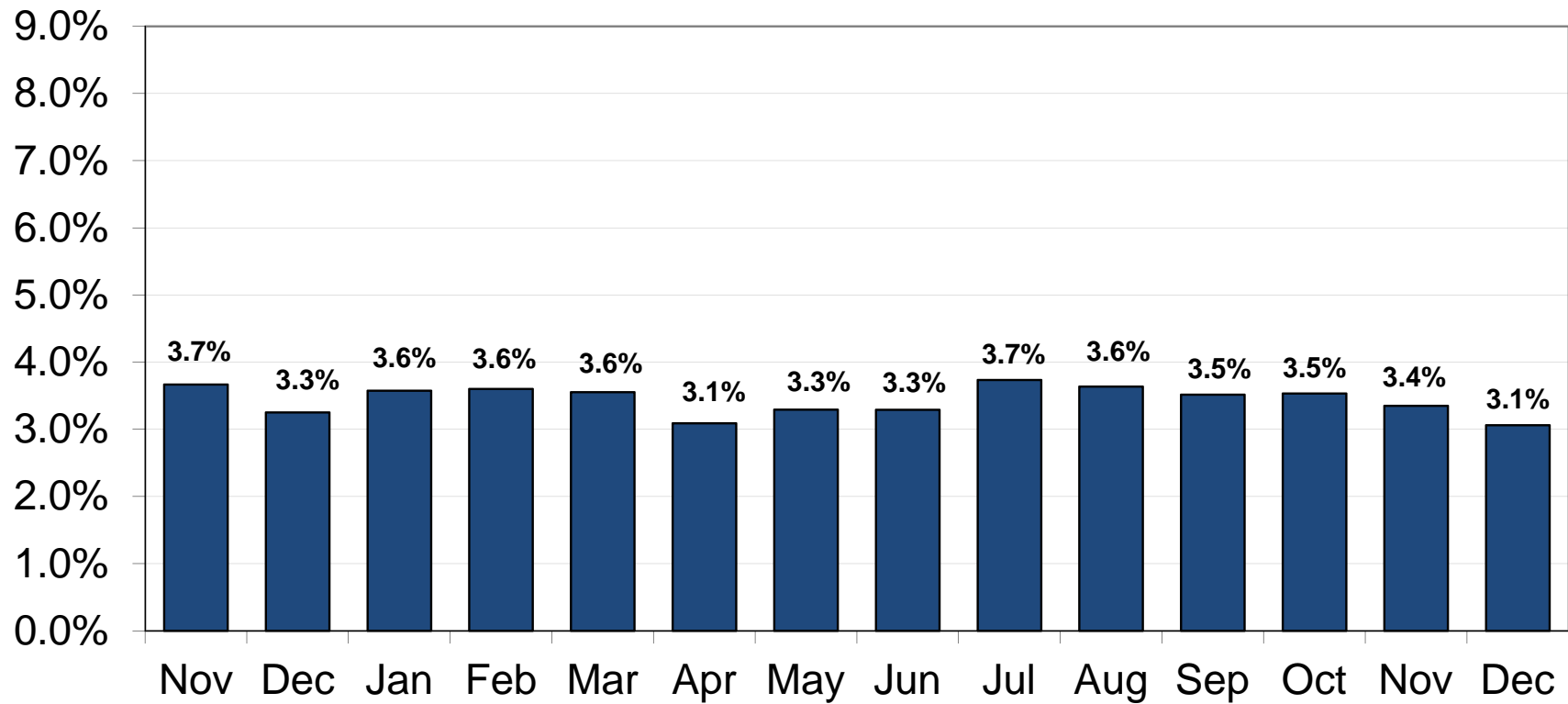
**Unemployment Rate:** The ratio of unemployed to the civilian labor force expressed as a percentage (unemployed/labor force).

**Unemployed Persons:** All persons who had no employment during the reference week, were available for work, except for temporary illness, and had made specific efforts to find employment some time during the four-week period ending with the reference week. Persons who were waiting to be recalled to a job from which they had been laid off need not have been looking for work to be classified as unemployed.

**Employed Persons:** All persons who, during the reference week (week including the twelfth day of the month), (a) did any work as paid employees, worked in their own business or profession or on their own farm, or worked 15 hours or more as unpaid workers in an enterprise operated by a member of their family, or (b) were not working but who had jobs from which they were temporarily absent. Each employed person is counted only once, even if he or she holds more than one job.

**Labor Force:** All persons in the civilian noninstitutional population classified

Key West Labor Force Data  
Key West Unemployment Rate  
November 2013 - December 2014



Source: U. S. Bureau of Labor Statistics

**Monroe County Labor Force Data - Not Seasonally Adjusted**

**Unemployment Rate**

*(Source: U.S. Department of Labor, Bureau of Labor Statistics)*

Month	1997	1998	1999	2000	2001	2002	2003	2004	2005	2006	2007	2008	2009	2010	2011	2012	2013	2014
Jan	2.9%	3.0%	2.9%	2.9%	3.1%	4.7%	3.7%	3.2%	2.9%	2.6%	2.6%	3.0%	6.1%	7.4%	6.9%	5.6%	4.9%	3.8%
Feb	2.9%	2.9%	2.8%	2.8%	3.0%	4.3%	3.5%	3.0%	2.8%	2.4%	2.5%	2.9%	6.4%	7.1%	6.6%	5.4%	4.5%	3.7%
Mar	2.5%	2.7%	2.6%	2.7%	2.9%	4.2%	3.2%	3.1%	2.6%	2.3%	2.4%	3.1%	6.2%	6.9%	6.3%	5.1%	4.2%	3.8%
Apr	2.3%	2.4%	2.3%	2.6%	2.9%	4.1%	3.2%	2.9%	2.4%	2.2%	2.3%	3.0%	6.0%	6.7%	6.1%	4.9%	4.0%	3.3%
May	2.1%	2.4%	2.1%	2.8%	2.7%	3.9%	3.1%	2.9%	2.5%	2.3%	2.3%	3.4%	6.4%	6.6%	6.1%	5.0%	4.2%	3.6%
Jun	2.3%	2.5%	2.0%	3.0%	3.1%	4.2%	3.5%	3.2%	2.7%	2.5%	2.6%	3.8%	6.8%	6.9%	6.4%	5.1%	4.3%	3.5%
Jul	2.1%	2.3%	2.1%	2.9%	3.0%	3.9%	3.3%	3.0%	2.6%	2.7%	2.9%	4.2%	6.9%	7.1%	6.4%	5.3%	4.4%	3.9%
Aug	2.2%	2.1%	2.1%	3.1%	3.3%	4.1%	3.4%	3.0%	2.5%	2.7%	2.8%	4.5%	6.9%	7.4%	6.4%	5.2%	4.1%	3.9%
Sep	2.5%	2.2%	2.4%	3.1%	3.1%	3.9%	3.4%	3.1%	2.8%	2.6%	2.9%	4.8%	7.2%	7.5%	6.4%	5.1%	4.1%	3.7%
Oct	2.4%	4.4%	2.3%	2.8%	4.4%	3.7%	3.2%	3.0%	2.5%	2.4%	2.8%	5.0%	7.3%	7.2%	6.4%	4.9%	4.0%	3.6%
Nov	2.3%	3.1%	2.4%	2.8%	4.7%	3.7%	3.3%	3.0%	3.4%	2.5%	2.8%	5.1%	7.3%	7.4%	6.4%	4.8%	3.8%	3.5%
Dec	2.4%	2.6%	2.0%	2.6%	4.6%	3.6%	3.0%	2.8%	2.5%	2.2%	2.8%	5.4%	7.2%	6.8%	6.2%	4.7%	3.5%	3.2%
Average	2.4%	2.7%	2.3%	2.9%	3.4%	4.0%	3.3%	3.0%	2.7%	2.4%	2.6%	4.0%	6.7%	7.1%	6.4%	5.1%	4.2%	3.6%

**Monroe County Labor Force Data - Not Seasonally Adjusted**

**Unemployed Persons**

*(Source: U.S. Department of Labor, Bureau of Labor Statistics)*

Month	1997	1998	1999	2000	2001	2002	2003	2004	2005	2006	2007	2008	2009	2010	2011	2012	2013	2014
Jan	1,363	1,403	1,388	1,316	1,444	2,164	1,747	1,486	1,313	1,147	1,134	1,392	2,770	3,392	3,211	2,679	2,392	1,875
Feb	1,389	1,372	1,350	1,278	1,396	2,014	1,673	1,385	1,274	1,067	1,081	1,387	2,903	3,295	3,102	2,591	2,189	1,891
Mar	1,223	1,315	1,280	1,243	1,392	1,948	1,538	1,422	1,186	1,039	1,052	1,460	2,848	3,235	2,984	2,499	2,049	1,918
Apr	1,108	1,161	1,133	1,166	1,362	1,904	1,490	1,314	1,096	995	997	1,400	2,734	3,147	2,861	2,349	1,975	1,659
May	1,010	1,156	1,030	1,276	1,271	1,812	1,465	1,328	1,126	1,015	1,018	1,610	2,926	3,045	2,887	2,453	2,092	1,828
Jun	1,089	1,217	987	1,366	1,442	1,948	1,661	1,476	1,210	1,109	1,179	1,785	3,128	3,173	3,025	2,483	2,168	1,783
Jul	988	1,137	988	1,317	1,406	1,835	1,553	1,416	1,186	1,180	1,271	2,004	3,157	3,305	3,028	2,618	2,185	1,973
Aug	1,052	1,035	979	1,388	1,546	1,906	1,567	1,383	1,152	1,169	1,249	2,094	3,161	3,415	3,018	2,541	2,065	1,969
Sep	1,170	1,051	1,134	1,407	1,429	1,822	1,559	1,374	1,227	1,128	1,294	2,204	3,250	3,450	2,967	2,438	2,035	1,817
Oct	1,100	2,093	1,086	1,254	1,994	1,694	1,469	1,326	1,090	1,035	1,248	2,250	3,249	3,263	2,778	2,330	1,936	1,765
Nov	1,064	1,480	1,113	1,269	2,106	1,718	1,516	1,357	1,499	1,072	1,272	2,320	3,299	3,433	2,794	2,320	1,886	1,700
Dec	1,154	1,262	969	1,175	2,090	1,681	1,362	1,276	1,097	966	1,279	2,465	3,270	3,168	2,695	2,290	1,730	1,580
Average	1,143	1,307	1,120	1,288	1,573	1,871	1,550	1,379	1,205	1,077	1,173	1,864	3,058	3,277	2,946	2,466	2,059	1,813

**Monroe County Labor Force Data - Not Seasonally Adjusted  
Employed Persons**

*(Source: U.S. Department of Labor, Bureau of Labor Statistics)*

Month	1997	1998	1999	2000	2001	2002	2003	2004	2005	2006	2007	2008	2009	2010	2011	2012	2013	2014
Jan	45,368	46,145	47,275	43,497	45,453	43,870	45,164	44,610	44,407	43,342	42,638	45,388	42,469	42,676	43,591	45,136	46,641	47,729
Feb	46,052	46,580	47,646	43,698	45,586	44,576	45,743	44,898	44,661	43,748	42,974	45,743	42,729	43,045	44,077	45,510	46,729	48,684
Mar	46,951	47,236	48,007	44,212	46,398	44,861	46,368	45,108	44,907	44,178	43,473	46,256	43,008	43,636	44,445	46,047	47,308	49,124
Apr	46,071	46,781	47,478	43,889	45,740	44,708	45,635	44,751	44,446	43,596	42,998	45,792	42,945	43,520	44,404	45,906	47,499	49,164
May	46,309	47,018	47,442	43,618	45,746	44,728	45,628	44,598	44,277	43,654	43,246	45,732	42,808	43,377	44,237	46,317	47,720	49,456
Jun	46,414	47,066	47,301	44,405	45,356	44,745	45,560	44,824	44,331	43,381	43,397	45,331	42,616	43,139	43,941	46,326	47,759	48,493
Jul	46,570	47,331	46,957	43,933	45,188	44,824	45,265	45,012	44,356	43,161	43,323	45,196	42,457	43,155	43,974	46,465	47,521	47,980
Aug	46,572	47,330	46,396	43,471	44,724	44,727	44,935	44,362	44,180	42,583	43,396	44,376	42,402	42,770	43,884	46,034	47,778	48,333
Sep	45,608	46,379	46,018	43,457	44,505	44,333	44,264	42,611	43,248	41,697	43,237	43,371	41,682	42,407	43,435	45,416	47,103	47,548
Oct	45,533	45,579	45,180	43,489	43,208	44,364	44,374	43,381	43,021	41,756	43,168	43,112	41,404	42,307	43,745	45,467	46,878	47,382
Nov	46,019	46,598	45,950	43,946	43,114	44,343	44,348	43,652	42,367	42,198	43,994	43,374	41,629	42,729	44,276	45,574	47,316	47,344
Dec	46,274	46,988	46,352	44,250	43,598	44,647	44,604	43,819	42,983	42,561	44,645	43,186	41,887	43,199	44,742	45,930	47,821	47,532
Average	46,145	46,753	46,834	43,822	44,885	44,561	45,157	44,302	43,932	42,988	43,374	44,738	42,336	42,997	44,063	45,844	47,339	48,231

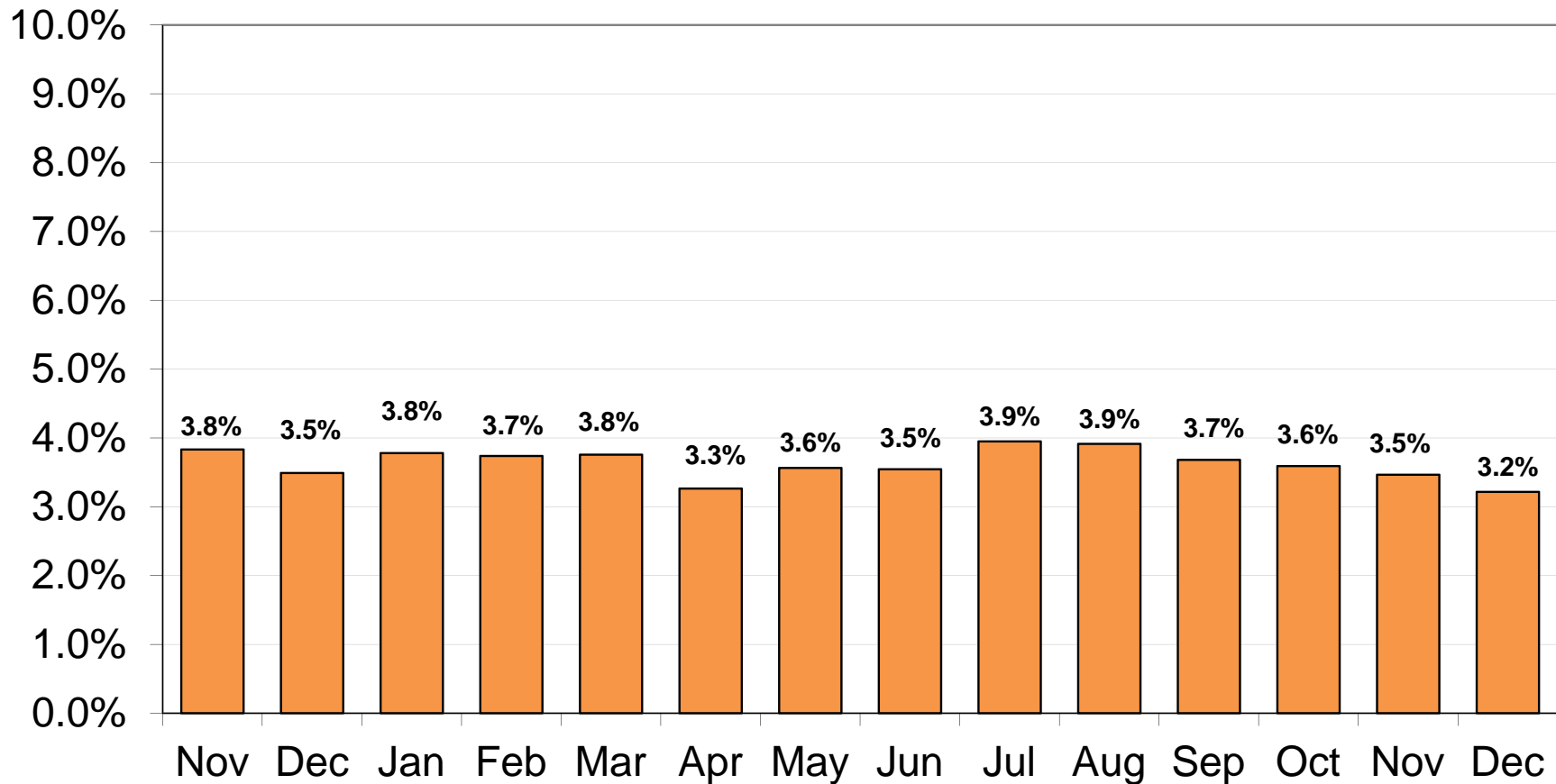
**Monroe County Labor Force Data - Not Seasonally Adjusted  
Labor Force**

*(Source: U.S. Department of Labor, Bureau of Labor Statistics)*

Month	1997	1998	1999	2000	2001	2002	2003	2004	2005	2006	2007	2008	2009	2010	2011	2012	2013	2014
Jan	46,731	47,548	48,663	44,813	46,897	46,034	46,911	46,096	45,720	44,489	43,772	46,780	45,239	46,068	46,802	47,815	49,033	49,604
Feb	47,441	47,952	48,996	44,976	46,982	46,590	47,416	46,283	45,935	44,815	44,055	47,130	45,632	46,340	47,179	48,101	48,918	50,575
Mar	48,174	48,551	49,287	45,455	47,790	46,809	47,906	46,530	46,093	45,217	44,525	47,716	45,856	46,871	47,429	48,546	49,357	51,042
Apr	47,179	47,942	48,611	45,055	47,102	46,612	47,125	46,065	45,542	44,591	43,995	47,192	45,679	46,667	47,265	48,255	49,474	50,823
May	47,319	48,174	48,472	44,894	47,017	46,540	47,093	45,926	45,403	44,669	44,264	47,342	45,734	46,422	47,124	48,770	49,812	51,284
Jun	47,503	48,283	48,288	45,771	46,798	46,693	47,221	46,300	45,541	44,490	44,576	47,116	45,744	46,312	46,966	48,809	49,927	50,276
Jul	47,558	48,468	47,945	45,250	46,594	46,659	46,818	46,428	45,542	44,341	44,594	47,200	45,614	46,460	47,002	49,083	49,706	49,953
Aug	47,624	48,365	47,375	44,859	46,270	46,633	46,502	45,745	45,332	43,752	44,645	46,470	45,563	46,185	46,902	48,575	49,843	50,302
Sep	46,778	47,430	47,152	44,864	45,934	46,155	45,823	43,985	44,475	42,825	44,531	45,575	44,932	45,857	46,402	47,854	49,138	49,365
Oct	46,633	47,672	46,266	44,743	45,202	46,058	45,843	44,707	44,111	42,791	44,416	45,362	44,653	45,570	46,523	47,797	48,814	49,147
Nov	47,083	48,078	47,063	45,215	45,220	46,061	45,864	45,009	43,866	43,270	45,266	45,694	44,928	46,162	47,070	47,894	49,202	49,044
Dec	47,428	48,250	47,321	45,425	45,688	46,328	45,966	45,095	44,080	43,527	45,924	45,651	45,157	46,367	47,437	48,220	49,551	49,112
Average	47,288	48,059	47,953	45,110	46,458	46,431	46,707	45,681	45,137	44,065	44,547	46,602	45,394	46,273	47,008	48,310	49,398	50,044



Monroe County Labor Force Data  
Monroe County Unemployment Rate  
November 2013 - December 2014



Source: U. S. Bureau of Labor Statistics

**Florida Labor Force Data - Not Seasonally Adjusted**

**Unemployment Rate**

*(Source: U.S. Department of Labor, Bureau of Labor Statistics)*

Month	1997	1998	1999	2000	2001	2002	2003	2004	2005	2006	2007	2008	2009	2010	2011	2012	2013	2014
Jan	5.5%	4.9%	4.3%	3.8%	4.1%	6.1%	5.6%	4.9%	4.3%	3.3%	3.7%	4.9%	8.9%	11.7%	11.1%	9.4%	8.4%	6.3%
Feb	5.1%	4.6%	4.2%	3.7%	3.8%	5.8%	5.3%	4.6%	4.2%	3.2%	3.5%	4.8%	9.3%	11.4%	10.7%	9.2%	7.8%	6.3%
Mar	5.0%	4.6%	3.9%	3.7%	3.9%	5.7%	5.2%	4.7%	3.9%	3.1%	3.4%	5.0%	9.5%	11.3%	10.4%	8.8%	7.4%	6.4%
Apr	4.8%	4.2%	4.0%	3.5%	4.1%	5.7%	5.1%	4.4%	3.7%	3.0%	3.4%	4.9%	9.4%	10.9%	10.1%	8.4%	7.1%	5.7%
May	4.8%	4.3%	3.8%	3.7%	3.9%	5.5%	5.2%	4.5%	3.7%	3.1%	3.5%	5.5%	10.0%	10.9%	10.5%	8.7%	7.3%	6.1%
Jun	5.3%	4.8%	4.1%	4.2%	4.5%	6.0%	5.9%	5.0%	4.0%	3.5%	4.1%	6.1%	10.8%	11.3%	11.1%	9.2%	7.7%	6.3%
Jul	5.2%	4.9%	4.3%	4.1%	4.5%	5.9%	5.6%	5.0%	4.0%	3.7%	4.4%	6.7%	11.0%	11.6%	10.9%	9.4%	7.6%	6.6%
Aug	5.3%	4.8%	4.4%	4.2%	4.9%	5.9%	5.6%	4.8%	3.8%	3.7%	4.5%	7.1%	11.2%	11.7%	11.0%	9.1%	7.4%	6.7%
Sep	5.2%	4.7%	4.2%	4.0%	4.8%	5.6%	5.4%	4.7%	3.8%	3.6%	4.5%	7.0%	11.2%	11.4%	10.4%	8.5%	7.1%	6.1%
Oct	4.6%	4.4%	3.9%	3.7%	5.9%	5.4%	5.0%	4.6%	3.5%	3.3%	4.4%	7.1%	11.2%	11.1%	9.9%	8.3%	6.7%	5.8%
Nov	4.5%	4.1%	3.8%	3.6%	5.9%	5.5%	5.0%	4.4%	3.6%	3.4%	4.4%	7.5%	11.1%	11.4%	9.8%	8.0%	6.4%	5.6%
Dec	4.4%	3.6%	3.4%	3.4%	5.8%	5.3%	4.5%	4.2%	3.1%	3.2%	4.6%	7.8%	11.2%	11.0%	9.7%	8.0%	5.9%	5.4%
Average	5.0%	4.5%	4.0%	3.8%	4.7%	5.7%	5.3%	4.7%	3.8%	3.3%	4.0%	6.2%	10.4%	11.3%	10.5%	8.8%	7.2%	6.1%

**Florida Labor Force Data - Not Seasonally Adjusted**

**Unemployed Persons**

*(Source: U.S. Department of Labor, Bureau of Labor Statistics)*

Month	1997	1998	1999	2000	2001	2002	2003	2004	2005	2006	2007	2008	2009	2010	2011	2012	2013	2014
Jan	395,451	367,964	323,888	298,401	322,027	483,409	456,732	404,266	366,614	285,053	327,022	449,998	808,912	1,053,027	1,012,036	867,213	782,303	597,390
Feb	368,011	341,534	318,114	287,749	306,331	463,547	432,736	381,052	356,122	281,458	313,583	440,686	844,643	1,034,107	980,579	849,128	729,783	601,444
Mar	367,873	348,457	296,250	288,119	314,723	458,207	422,849	392,986	333,308	269,402	305,531	459,945	862,487	1,023,251	957,770	820,603	692,436	611,526
Apr	354,355	312,108	302,920	274,434	322,701	456,635	415,910	369,671	319,538	262,285	304,760	445,779	852,027	997,654	932,393	784,645	668,142	543,177
May	357,295	321,924	292,145	293,130	309,968	441,763	424,158	374,388	315,522	270,984	315,663	509,452	915,256	995,891	948,738	815,883	689,368	592,463
Jun	397,635	366,765	319,244	328,633	361,278	486,247	484,557	421,691	348,617	312,527	373,960	567,525	982,583	1,034,254	1,004,627	864,139	734,058	604,230
Jul	389,353	371,273	335,451	325,634	360,734	480,017	465,136	420,546	350,143	333,957	405,685	623,269	1,009,806	1,075,549	1,017,277	885,315	726,808	641,807
Aug	393,657	366,904	336,704	335,698	389,327	482,393	461,075	406,786	335,530	333,043	407,108	657,391	1,016,692	1,083,586	996,461	857,851	705,634	651,363
Sep	387,458	356,155	327,165	318,646	384,701	455,861	442,952	396,442	334,761	318,421	408,747	647,933	1,020,441	1,054,660	970,496	805,956	671,088	590,872
Oct	345,484	339,546	304,515	294,956	472,560	439,908	411,791	386,530	308,592	293,210	397,106	657,992	1,011,375	1,024,589	921,815	780,600	635,322	562,515
Nov	335,194	313,768	295,136	285,472	471,713	442,128	409,308	377,438	316,167	307,972	404,518	685,383	1,003,681	1,053,203	885,263	751,970	599,360	541,833
Dec	326,661	277,039	260,416	272,537	464,061	427,844	371,834	355,730	272,098	286,761	420,071	719,099	1,007,398	1,007,759	866,138	752,836	558,137	514,773
Average	368,202	340,286	309,329	300,284	373,344	459,830	433,253	390,627	329,751	296,256	365,313	572,038	944,608	1,036,461	957,799	819,678	682,703	587,783

**Florida Labor Force Data - Not Seasonally Adjusted**

**Employed Persons**

*(Source: U.S. Department of Labor, Bureau of Labor Statistics)*

Month	1997	1998	1999	2000	2001	2002	2003	2004	2005	2006	2007	2008	2009	2010	2011	2012	2013	2014
Jan	6,847,409	7,070,029	7,280,458	7,460,372	7,627,158	7,455,754	7,666,809	7,833,400	8,070,482	8,386,874	8,631,353	8,646,784	8,260,783	7,969,443	8,145,950	8,358,127	8,580,363	8,834,402
Feb	6,888,775	7,127,675	7,309,095	7,487,885	7,676,982	7,540,534	7,718,455	7,882,282	8,118,886	8,436,842	8,658,990	8,648,287	8,233,883	8,014,921	8,188,704	8,421,363	8,634,407	8,912,405
Mar	6,980,549	7,187,375	7,366,024	7,531,547	7,740,809	7,577,001	7,760,291	7,920,923	8,173,714	8,512,539	8,728,325	8,688,368	8,216,725	8,072,299	8,259,068	8,486,966	8,681,283	8,964,159
Apr	6,975,638	7,169,976	7,342,798	7,545,530	7,604,668	7,567,816	7,754,211	7,945,844	8,239,039	8,520,610	8,696,931	8,691,773	8,218,003	8,141,506	8,282,238	8,508,395	8,725,066	8,996,301
May	7,056,612	7,232,395	7,422,214	7,555,951	7,644,248	7,630,089	7,779,133	7,989,094	8,306,575	8,576,995	8,731,371	8,688,351	8,201,873	8,168,958	8,330,341	8,576,956	8,791,151	9,043,215
Jun	7,052,207	7,228,446	7,437,370	7,562,778	7,639,557	7,611,245	7,773,208	7,999,473	8,300,849	8,596,562	8,725,383	8,661,268	8,151,777	8,139,522	8,283,387	8,554,139	8,764,386	9,040,034
Jul	7,109,568	7,265,028	7,429,746	7,584,000	7,679,532	7,641,974	7,786,219	8,055,978	8,370,839	8,618,693	8,738,106	8,671,722	8,153,737	8,163,213	8,307,508	8,562,905	8,790,179	9,052,680
Aug	7,104,338	7,244,057	7,391,278	7,577,431	7,633,001	7,641,051	7,783,242	8,026,012	8,384,558	8,625,327	8,688,997	8,616,173	8,101,546	8,171,865	8,330,001	8,549,529	8,779,693	9,040,314
Sep	7,081,870	7,271,251	7,407,585	7,582,159	7,671,110	7,700,014	7,816,498	8,016,476	8,406,133	8,646,002	8,713,639	8,599,967	8,061,053	8,194,653	8,376,247	8,628,482	8,819,422	9,119,877
Oct	7,108,413	7,302,594	7,449,326	7,620,005	7,528,896	7,693,583	7,851,616	8,078,143	8,436,085	8,690,320	8,707,011	8,586,544	8,047,546	8,186,194	8,401,358	8,660,681	8,780,209	9,118,896
Nov	7,132,620	7,324,773	7,474,521	7,635,881	7,515,997	7,664,459	7,856,654	8,108,509	8,412,860	8,679,199	8,724,204	8,506,519	8,034,208	8,159,091	8,399,688	8,620,145	8,812,079	9,089,269
Dec	7,149,923	7,364,546	7,509,487	7,689,330	7,534,658	7,685,607	7,880,224	8,122,290	8,443,353	8,719,178	8,705,005	8,451,695	8,002,647	8,188,523	8,423,122	8,635,690	8,836,818	9,056,232
Average	7,040,660	7,232,345	7,401,659	7,569,406	7,624,718	7,617,427	7,785,547	7,998,202	8,305,281	8,584,095	8,704,110	8,621,454	8,140,315	8,130,849	8,310,634	8,546,948	8,749,588	9,022,315

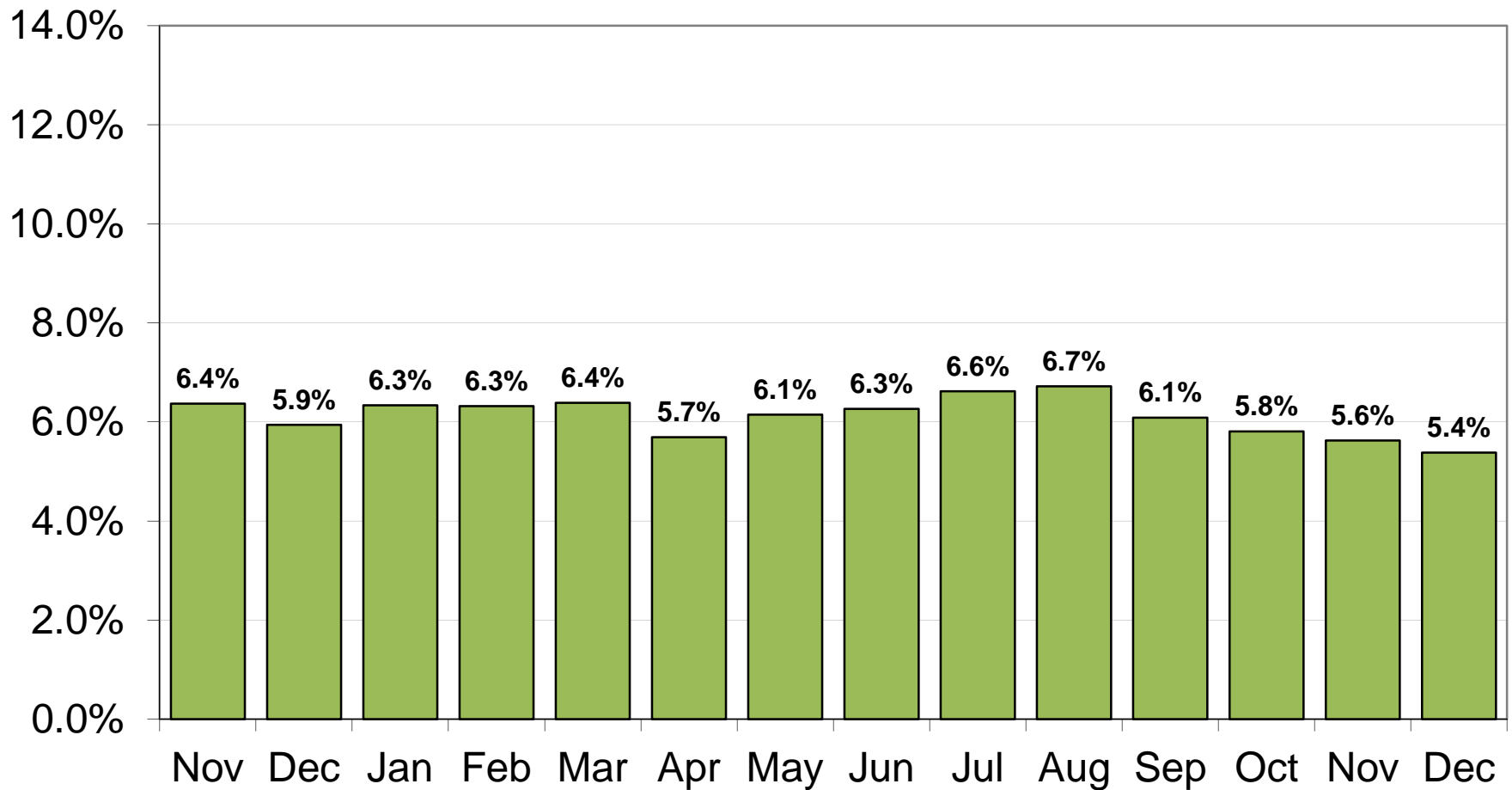
**Florida Labor Force Data - Not Seasonally Adjusted**

**Labor Force**

*(Source: U.S. Department of Labor, Bureau of Labor Statistics)*

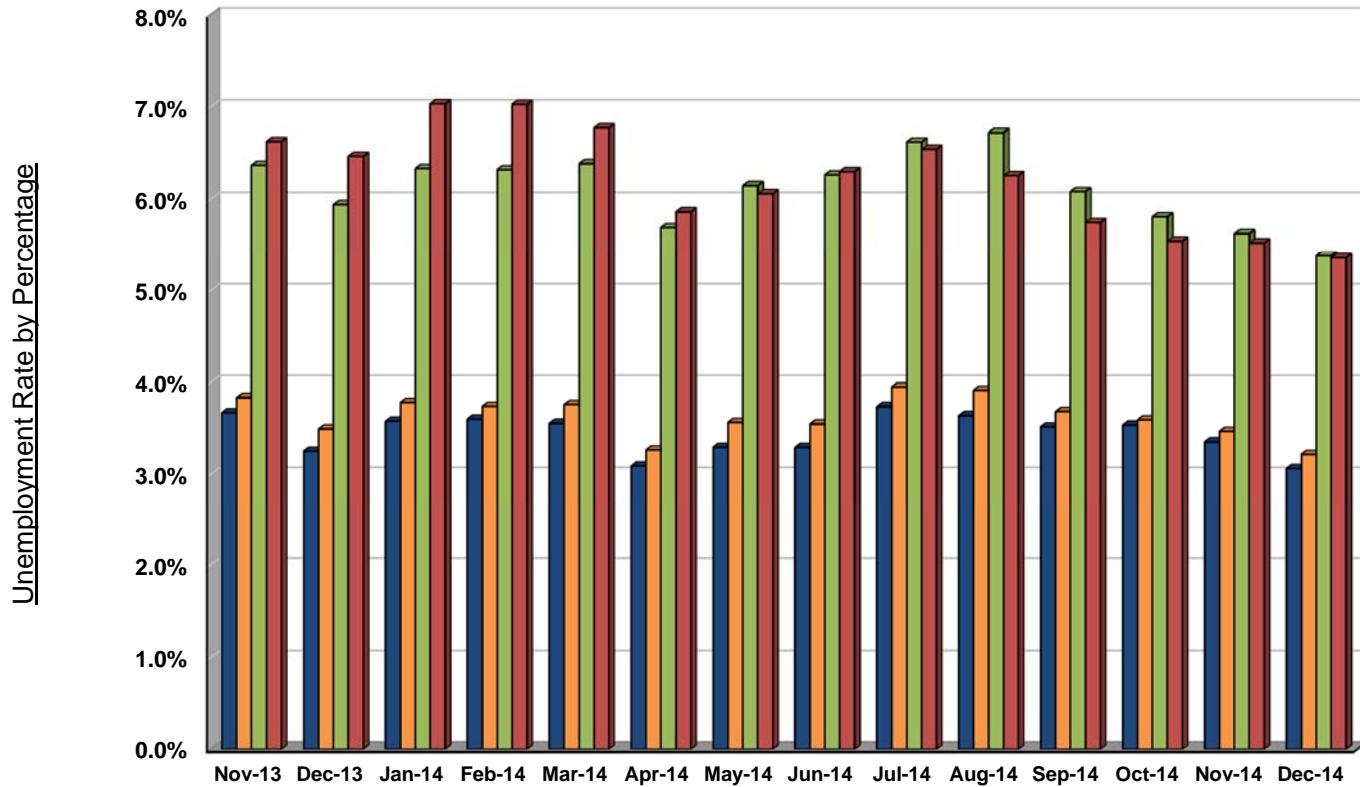
Month	1997	1998	1999	2000	2001	2002	2003	2004	2005	2006	2007	2008	2009	2010	2011	2012	2013	2014
Jan	7,242,860	7,437,993	7,604,346	7,758,773	7,949,185	7,939,163	8,123,541	8,237,666	8,437,096	8,671,927	8,958,375	9,096,782	9,069,695	9,022,470	9,157,986	9,225,340	9,362,666	9,431,792
Feb	7,256,786	7,469,209	7,627,209	7,775,634	7,983,313	8,004,081	8,151,191	8,263,334	8,475,008	8,718,300	8,972,573	9,088,973	9,078,526	9,049,028	9,169,283	9,270,491	9,364,190	9,513,849
Mar	7,348,422	7,535,832	7,662,274	7,819,666	8,055,532	8,035,208	8,183,140	8,313,909	8,507,022	8,781,941	9,033,856	9,148,313	9,079,212	9,095,550	9,216,838	9,307,569	9,373,719	9,575,685
Apr	7,329,993	7,482,084	7,645,718	7,819,964	7,927,369	8,024,451	8,170,121	8,315,515	8,558,577	8,782,895	9,001,691	9,137,552	9,070,030	9,139,160	9,214,631	9,293,040	9,393,208	9,539,478
May	7,413,907	7,554,319	7,714,359	7,849,081	7,954,216	8,071,852	8,203,291	8,363,482	8,622,097	8,847,979	9,047,034	9,197,803	9,117,129	9,164,849	9,279,079	9,392,839	9,480,519	9,635,678
Jun	7,449,842	7,595,211	7,756,614	7,891,411	8,000,835	8,097,492	8,257,765	8,421,164	8,649,466	8,909,089	9,099,343	9,228,793	9,134,360	9,173,776	9,288,014	9,418,278	9,498,444	9,644,264
Jul	7,498,921	7,636,301	7,765,197	7,909,634	8,040,266	8,121,991	8,251,355	8,476,524	8,720,982	8,952,650	9,143,791	9,294,991	9,163,543	9,238,762	9,324,785	9,448,220	9,516,987	9,694,487
Aug	7,497,995	7,610,961	7,727,982	7,913,129	8,022,328	8,123,444	8,244,317	8,432,798	8,720,088	8,958,370	9,096,105	9,273,564	9,118,238	9,255,451	9,326,462	9,407,380	9,485,327	9,691,677
Sep	7,469,328	7,627,406	7,734,750	7,900,805	8,055,811	8,155,875	8,259,450	8,412,918	8,740,894	8,964,423	9,122,386	9,247,900	9,081,494	9,249,313	9,346,743	9,434,438	9,490,510	9,710,749
Oct	7,453,897	7,642,140	7,753,841	7,914,961	8,001,456	8,133,491	8,263,407	8,464,673	8,744,677	8,983,530	9,104,117	9,244,536	9,058,921	9,210,783	9,323,173	9,441,281	9,415,531	9,681,411
Nov	7,467,814	7,638,541	7,769,657	7,921,353	7,987,710	8,106,587	8,265,962	8,485,947	8,729,027	8,987,171	9,128,722	9,191,902	9,037,889	9,212,294	9,284,951	9,372,115	9,411,439	9,631,102
Dec	7,476,584	7,641,585	7,769,903	7,961,867	7,998,719	8,113,451	8,252,058	8,478,020	8,715,451	9,005,939	9,125,076	9,170,794	9,010,045	9,196,282	9,289,260	9,388,526	9,394,955	9,571,005
Average	7,408,862	7,572,632	7,710,988	7,869,690	7,998,062	8,077,257	8,218,800	8,388,829	8,635,032	8,880,351	9,069,422	9,193,492	9,084,924	9,167,310	9,268,434	9,366,626	9,432,291	9,610,098

Florida Labor Force Data  
Florida Unemployment Rate  
November 2013 - December 2014



Source: U. S. Bureau of Labor Statistics

Comparative Unemployment Rates  
The City of Key West, Monroe County, the State of Florida, and the United States of America  
November 2013 - December 2014 Unemployment Rate



	Nov-13	Dec-13	Jan-14	Feb-14	Mar-14	Apr-14	May-14	Jun-14	Jul-14	Aug-14	Sep-14	Oct-14	Nov-14	Dec-14
■ Key West	3.7%	3.3%	3.6%	3.6%	3.6%	3.1%	3.3%	3.3%	3.7%	3.6%	3.5%	3.5%	3.4%	3.1%
■ Monroe County	3.8%	3.5%	3.8%	3.7%	3.8%	3.3%	3.6%	3.5%	3.9%	3.9%	3.7%	3.6%	3.5%	3.2%
■ Florida	6.4%	5.9%	6.3%	6.3%	6.4%	5.7%	6.1%	6.3%	6.6%	6.7%	6.1%	5.8%	5.6%	5.4%
■ United States	6.6%	6.5%	7.0%	7.0%	6.8%	5.9%	6.1%	6.3%	6.5%	6.3%	5.7%	5.5%	5.5%	5.4%

**Monroe County Sales Tax Data**  
**Tourism & Recreation Taxable Sales**

(Source: Florida Department of Revenue, Florida Sales Tax Receipts)

Month	2007	2008	2009	2010	2011	2012	2013	2014	Average
Jan	\$89,070,267	\$93,481,600	\$88,325,467	\$91,377,441	\$93,247,402	\$110,159,410	\$111,658,057	\$144,154,923	\$102,684,321
Feb	\$101,421,323	\$104,137,898	\$102,998,205	\$97,631,810	\$103,533,798	\$122,561,677	\$140,726,946	\$150,102,691	\$115,389,294
Mar	\$119,870,977	\$125,334,875	\$105,177,926	\$114,102,961	\$124,406,400	\$137,425,618	\$144,390,743	\$158,176,948	\$128,610,806
Apr	\$138,911,818	\$143,823,193	\$123,066,133	\$132,043,850	\$150,219,424	\$163,268,828	\$184,454,771	\$185,870,523	\$152,707,318
May	\$120,116,643	\$112,291,415	\$110,198,426	\$114,428,296	\$132,687,376	\$134,793,289	\$136,181,975	\$152,251,994	\$126,618,677
Jun	\$100,569,588	\$103,246,977	\$93,689,281	\$100,029,219	\$109,746,320	\$116,685,658	\$120,616,483	\$135,430,503	\$110,001,754
Jul	\$96,897,636	\$92,554,019	\$85,474,653	\$87,826,365	\$101,954,088	\$110,397,361	\$116,543,451	\$124,454,760	\$102,012,792
Aug	\$100,003,552	\$96,683,847	\$94,833,984	\$98,512,180	\$115,908,565	\$121,069,353	\$128,469,688	\$133,133,461	\$111,076,829
Sep	\$78,897,482	\$77,580,386	\$75,838,307	\$74,314,689	\$89,282,756	\$91,980,902	\$108,630,213	\$119,635,156	\$89,519,986
Oct	\$59,088,680	\$43,139,157	\$51,969,300	\$55,079,872	\$66,880,920	\$70,851,645	\$74,762,930	\$79,710,265	\$62,685,346
Nov	\$86,252,088	\$82,784,311	\$86,100,025	\$92,517,786	\$104,616,523	\$112,928,181	\$119,246,106	\$132,248,757	\$102,086,722
Dec	\$83,380,761	\$77,226,132	\$78,161,388	\$81,793,228	\$97,673,157	\$97,007,075	\$111,478,544	\$120,279,044	\$93,374,916
<b>Total</b>	<b>\$1,174,480,815</b>	<b>\$1,152,283,810</b>	<b>\$1,095,833,095</b>	<b>\$1,139,657,697</b>	<b>\$1,290,156,729</b>	<b>\$1,389,128,997</b>	<b>\$1,497,159,908</b>	<b>\$1,635,449,025</b>	<b>\$1,296,768,760</b>

**Monroe County Sales Tax Data**  
**Retail Taxable Sales (Incl Tourism & Recreation)**

(Source: Florida Department of Revenue, Florida Sales Tax Receipts)

Month	2007	2008	2009	2010	2011	2012	2013	2014	Average
Jan	\$178,477,409	\$183,697,026	\$163,116,423	\$167,493,102	\$172,324,117	\$200,967,962	\$196,426,832	\$238,300,309	\$187,600,397
Feb	\$180,214,798	\$179,264,484	\$168,612,164	\$161,398,661	\$172,241,952	\$199,479,588	\$220,750,053	\$233,163,800	\$189,390,688
Mar	\$204,504,585	\$208,531,156	\$174,302,438	\$183,792,961	\$200,224,952	\$219,568,125	\$228,670,571	\$248,086,618	\$208,460,176
Apr	\$238,829,078	\$232,079,792	\$202,399,934	\$210,386,264	\$238,969,628	\$260,999,460	\$281,842,892	\$292,327,196	\$244,729,280
May	\$205,343,812	\$191,644,936	\$182,340,782	\$187,826,006	\$214,848,419	\$218,592,889	\$220,094,460	\$243,810,345	\$208,062,706
Jun	\$182,991,341	\$177,643,137	\$166,542,197	\$166,300,948	\$183,539,279	\$197,156,695	\$199,315,516	\$219,473,658	\$186,620,346
Jul	\$177,408,214	\$167,204,435	\$158,346,312	\$158,738,146	\$179,379,039	\$194,786,756	\$204,167,878	\$217,804,114	\$182,229,362
Aug	\$181,092,156	\$170,547,637	\$165,120,090	\$168,272,894	\$192,789,074	\$202,129,699	\$210,914,282	\$220,645,282	\$188,938,889
Sep	\$151,574,044	\$141,845,172	\$138,121,481	\$135,113,954	\$157,733,183	\$164,423,354	\$185,589,210	\$202,416,725	\$159,602,140
Oct	\$119,571,117	\$97,636,919	\$106,357,066	\$109,518,017	\$129,584,647	\$135,651,485	\$141,404,277	\$149,693,304	\$123,677,104
Nov	\$151,634,240	\$138,835,782	\$143,115,659	\$149,519,178	\$165,164,063	\$181,119,854	\$192,237,593	\$204,042,117	\$165,708,561
Dec	\$155,048,365	\$139,541,068	\$140,550,180	\$144,512,748	\$166,300,084	\$169,901,153	\$184,081,585	\$198,521,883	\$162,307,133
<b>Total</b>	<b>\$2,126,689,159</b>	<b>\$2,028,471,544</b>	<b>\$1,908,924,726</b>	<b>\$1,942,872,879</b>	<b>\$2,173,098,438</b>	<b>\$2,344,777,020</b>	<b>\$2,465,495,147</b>	<b>\$2,668,285,351</b>	<b>\$2,207,326,783</b>

**Monroe County Sales Tax Data**  
**Total Monroe County Taxable Sales (Incl Retail and Commercial)**

(Source: Florida Department of Revenue, Florida Sales Tax Receipts)

Month	2007	2008	2009	2010	2011	2012	2013	2014	Average
Jan	\$217,573,588	\$219,148,805	\$193,448,969	\$198,350,155	\$205,027,113	\$234,800,304	\$229,993,883	\$277,717,362	\$222,007,522
Feb	\$218,808,045	\$215,471,199	\$198,942,317	\$192,600,187	\$206,157,399	\$233,741,192	\$258,101,180	\$273,911,127	\$224,716,581
Mar	\$240,823,102	\$243,608,817	\$206,034,518	\$215,088,661	\$233,795,492	\$254,622,681	\$264,007,531	\$287,675,445	\$243,207,031
Apr	\$278,889,214	\$270,964,979	\$235,885,554	\$246,051,947	\$277,209,526	\$298,107,902	\$321,827,763	\$335,334,316	\$283,033,900
May	\$244,759,783	\$227,844,382	\$214,950,444	\$221,427,757	\$250,516,856	\$254,364,222	\$260,222,368	\$285,444,507	\$244,941,290
Jun	\$219,853,600	\$212,233,930	\$195,978,522	\$198,346,528	\$217,509,797	\$231,161,069	\$235,921,529	\$259,285,899	\$221,286,359
Jul	\$213,111,488	\$200,791,133	\$189,031,574	\$189,879,129	\$212,505,861	\$228,482,253	\$239,760,474	\$256,827,561	\$216,298,684
Aug	\$217,735,667	\$205,826,293	\$196,656,647	\$198,983,485	\$225,796,474	\$235,418,578	\$247,069,349	\$266,851,399	\$224,292,237
Sep	\$186,432,457	\$171,196,170	\$166,148,780	\$163,885,965	\$187,724,382	\$195,510,295	\$219,750,367	\$239,983,437	\$191,328,982
Oct	\$150,927,430	\$126,194,543	\$133,474,490	\$137,746,419	\$159,851,286	\$163,346,676	\$174,620,953	\$183,884,657	\$153,755,807
Nov	\$184,691,156	\$169,070,322	\$172,947,998	\$178,774,698	\$195,259,804	\$212,879,189	\$228,245,529	\$242,008,296	\$197,984,624
Dec	\$188,038,845	\$168,041,591	\$168,856,149	\$175,698,764	\$199,324,515	\$201,784,164	\$221,299,833	\$235,114,071	\$194,769,742
<b>Total</b>	<b>\$2,561,644,375</b>	<b>\$2,430,392,164</b>	<b>\$2,272,355,962</b>	<b>\$2,316,833,695</b>	<b>\$2,570,678,506</b>	<b>\$2,744,218,525</b>	<b>\$2,900,820,760</b>	<b>\$3,144,038,076</b>	<b>\$2,617,622,758</b>

**Tourism & Recreation Taxable Sales**

**Percentage Change from Prior Year**

(Source: Florida Department of Revenue, Florida Sales Tax Receipts)

Month	2007	2008	2010	2011	2012	2013	2014
Jan	0.4%	5.0%	3.5%	2.0%	18.1%	1.4%	29.1%
Feb	1.6%	2.7%	-5.2%	6.0%	18.4%	14.8%	6.7%
Mar	4.5%	4.6%	8.5%	9.0%	10.5%	5.1%	9.5%
Apr	-5.3%	3.5%	7.3%	13.8%	8.7%	13.0%	0.8%
May	2.5%	-6.5%	3.8%	16.0%	1.6%	1.0%	11.8%
Jun	-2.3%	2.7%	6.8%	9.7%	6.3%	3.4%	12.3%
Jul	5.1%	-4.5%	2.8%	16.1%	8.3%	5.6%	6.8%
Aug	4.8%	-3.3%	3.9%	17.7%	4.5%	6.1%	3.6%
Sep	23.4%	-1.7%	-2.0%	20.1%	3.0%	18.1%	10.1%
Oct	6.0%	-27.0%	6.0%	21.4%	5.9%	5.5%	6.6%
Nov	7.3%	-4.0%	7.5%	13.1%	7.9%	5.6%	10.9%
Dec	6.3%	-7.4%	4.6%	19.4%	-0.7%	14.9%	7.9%
Total	3.4%	-1.9%	4.0%	13.2%	7.7%	7.8%	9.2%

**Monroe County Sales Tax Data**

**Year-to-Date Tourism & Recreation Taxable Sales**

(Source: Florida Department of Revenue, Florida Sales Tax Receipts)

Month	2007	2008	2009	2010	2011	2012	2013	2014
Jan	\$89,070,267	\$93,481,600	\$88,325,467	\$91,377,441	\$93,247,402	\$110,159,410	\$111,658,057	\$144,154,923
Feb	\$190,491,590	\$197,619,498	\$191,323,672	\$189,009,251	\$196,781,200	\$232,721,087	\$252,385,004	\$294,257,614
Mar	\$310,362,567	\$322,954,373	\$296,501,598	\$303,112,212	\$321,187,600	\$370,146,705	\$396,775,747	\$452,434,562
Apr	\$449,274,385	\$466,777,566	\$419,567,731	\$435,156,062	\$471,407,024	\$533,415,533	\$581,230,518	\$638,305,085
May	\$569,391,028	\$579,068,981	\$529,766,157	\$549,584,358	\$604,094,400	\$668,208,822	\$717,412,493	\$790,557,079
Jun	\$669,960,616	\$682,315,958	\$623,455,438	\$649,613,577	\$713,840,720	\$784,894,480	\$838,028,976	\$925,987,582
Jul	\$766,858,252	\$774,869,977	\$708,930,091	\$737,439,942	\$815,794,808	\$895,291,841	\$954,572,427	\$1,050,442,342
Aug	\$866,861,804	\$871,553,824	\$803,764,075	\$835,952,122	\$931,703,373	\$1,016,361,194	\$1,083,042,115	\$1,183,575,803
Sep	\$945,759,286	\$949,134,210	\$879,602,382	\$910,266,811	\$1,020,986,129	\$1,108,342,096	\$1,191,672,328	\$1,303,210,959
Oct	\$1,004,847,966	\$992,273,367	\$931,571,682	\$965,346,683	\$1,087,867,049	\$1,179,193,741	\$1,266,435,258	\$1,382,921,224
Nov	\$1,091,100,054	\$1,075,057,678	\$1,017,671,707	\$1,057,864,469	\$1,192,483,572	\$1,292,121,922	\$1,385,681,364	\$1,515,169,981
Dec	\$1,174,480,815	\$1,152,283,810	\$1,095,833,095	\$1,139,657,697	\$1,290,156,729	\$1,389,128,997	\$1,497,159,908	\$1,635,449,025

**Retail Taxable Sales (Incl Tourism & Recreation)**

**Percentage Change from Prior Year**

(Source: Florida Department of Revenue, Florida Sales Tax Receipts)

Month	2007	2008	2010	2011	2012	2013	2014
Jan	-7.2%	2.9%	2.7%	2.9%	16.6%	-2.3%	21.3%
Feb	-1.1%	-0.5%	-4.3%	6.7%	15.8%	10.7%	5.6%
Mar	2.4%	2.0%	5.4%	8.9%	9.7%	4.1%	8.5%
Apr	-3.9%	-2.8%	3.9%	13.6%	9.2%	8.0%	3.7%
May	-0.7%	-6.7%	3.0%	14.4%	1.7%	0.7%	10.8%
Jun	-2.5%	-2.9%	-0.1%	10.4%	7.4%	1.1%	10.1%
Jul	-1.1%	-5.8%	0.2%	13.0%	8.6%	4.8%	6.7%
Aug	3.1%	-5.8%	1.9%	14.6%	4.8%	4.3%	4.6%
Sep	14.4%	-6.4%	-2.2%	16.7%	4.2%	12.9%	9.1%
Oct	-2.2%	-18.3%	3.0%	18.3%	4.7%	4.2%	5.9%
Nov	3.1%	-8.4%	4.5%	10.5%	9.7%	6.1%	6.1%
Dec	2.1%	-10.0%	2.8%	15.1%	2.2%	8.3%	7.8%
Total	0.0%	-4.6%	1.8%	11.8%	7.9%	5.1%	8.2%

**Retail Taxable Sales (Incl Tourism & Recreation)**

**Year-to-Date Retail Taxable Sales**

(Source: Florida Department of Revenue, Florida Sales Tax Receipts)

Month	2007	2008	2009	2010	2011	2012	2013	2014
Jan	\$178,477,409	\$183,697,026	\$163,116,423	\$167,493,102	\$172,324,117	\$200,967,962	\$196,426,832	\$238,300,309
Feb	\$358,692,207	\$362,961,510	\$331,728,587	\$328,891,763	\$344,566,069	\$400,447,550	\$417,176,885	\$471,464,109
Mar	\$563,196,792	\$571,492,666	\$506,031,025	\$512,684,724	\$544,791,021	\$620,015,675	\$645,847,456	\$719,550,726
Apr	\$802,025,870	\$803,572,458	\$708,430,959	\$723,070,988	\$783,760,649	\$881,015,135	\$927,690,347	\$1,011,877,923
May	\$1,007,369,682	\$995,217,394	\$890,771,741	\$910,896,994	\$998,609,068	\$1,099,608,024	\$1,147,784,807	\$1,255,688,268
Jun	\$1,190,361,023	\$1,172,860,531	\$1,057,313,938	\$1,077,197,942	\$1,182,148,347	\$1,296,764,719	\$1,347,100,323	\$1,475,161,926
Jul	\$1,367,769,237	\$1,340,064,966	\$1,215,660,250	\$1,235,936,088	\$1,361,527,386	\$1,491,551,475	\$1,551,268,201	\$1,692,966,040
Aug	\$1,548,861,393	\$1,510,612,603	\$1,380,780,340	\$1,404,208,982	\$1,554,316,460	\$1,693,681,174	\$1,762,182,483	\$1,913,611,321
Sep	\$1,700,435,437	\$1,652,457,775	\$1,518,901,821	\$1,539,322,936	\$1,712,049,643	\$1,858,104,528	\$1,947,771,693	\$2,116,028,047
Oct	\$1,820,006,554	\$1,750,094,694	\$1,625,258,887	\$1,648,840,953	\$1,841,634,290	\$1,993,756,013	\$2,089,175,970	\$2,265,721,351
Nov	\$1,971,640,794	\$1,888,930,476	\$1,768,374,546	\$1,798,360,131	\$2,006,798,353	\$2,174,875,867	\$2,281,413,563	\$2,469,763,468
Dec	\$2,126,689,159	\$2,028,471,544	\$1,908,924,726	\$1,942,872,879	\$2,173,098,438	\$2,344,777,020	\$2,465,495,147	\$2,668,285,351

**Total Monroe County Taxable Sales (Incl Retail and Commercial)**

**Percentage Change from Prior Year**

(Source: Florida Department of Revenue, Florida Sales Tax Receipts)

Month	2007	2008	2010	2011	2012	2013	2014
Jan	-5.0%	0.7%	2.5%	3.4%	14.5%	-2.0%	20.7%
Feb	-1.8%	-1.5%	-3.2%	7.0%	13.4%	10.4%	6.1%
Mar	0.1%	1.2%	4.4%	8.7%	8.9%	3.7%	9.0%
Apr	-1.6%	-2.8%	4.3%	12.7%	7.5%	8.0%	4.2%
May	-0.8%	-6.9%	3.0%	13.1%	1.5%	2.3%	9.7%
Jun	-4.0%	-3.5%	1.2%	9.7%	6.3%	2.1%	9.9%
Jul	-2.9%	-5.8%	0.4%	11.9%	7.5%	4.9%	7.1%
Aug	2.5%	-5.5%	1.2%	13.5%	4.3%	4.9%	8.0%
Sep	11.1%	-8.2%	-1.4%	14.5%	4.1%	12.4%	9.2%
Oct	-5.5%	-16.4%	3.2%	16.0%	2.2%	6.9%	5.3%
Nov	0.2%	-8.5%	3.4%	9.2%	9.0%	7.2%	6.0%
Dec	0.3%	-10.6%	4.1%	13.4%	1.2%	9.7%	6.2%
Total	-0.8%	-5.1%	2.0%	11.0%	6.8%	5.7%	8.4%

**Total Monroe County Taxable Sales (Incl Retail and Commercial)**

**Year-to-Date Total County Taxable Sales**

(Source: Florida Department of Revenue, Florida Sales Tax Receipts)

Month	2007	2008	2009	2010	2011	2012	2013	2014
Jan	\$217,573,588	\$219,148,805	\$193,448,969	\$198,350,155	\$205,027,113	\$234,800,304	\$229,993,883	\$277,717,362
Feb	\$436,381,633	\$434,620,004	\$392,391,286	\$390,950,342	\$411,184,512	\$468,541,496	\$488,095,063	\$551,628,489
Mar	\$677,204,735	\$678,228,821	\$598,425,804	\$606,039,003	\$644,980,004	\$723,164,177	\$752,102,594	\$839,303,934
Apr	\$956,093,949	\$949,193,800	\$834,311,358	\$852,090,950	\$922,189,530	\$1,021,272,079	\$1,073,930,357	\$1,174,638,249
May	\$1,200,853,732	\$1,177,038,182	\$1,049,261,802	\$1,073,518,707	\$1,172,706,386	\$1,275,636,301	\$1,334,152,725	\$1,460,082,757
Jun	\$1,420,707,332	\$1,389,272,112	\$1,245,240,324	\$1,271,865,235	\$1,390,216,183	\$1,506,797,370	\$1,570,074,255	\$1,719,368,656
Jul	\$1,633,818,820	\$1,590,063,245	\$1,434,271,898	\$1,461,744,364	\$1,602,722,044	\$1,735,279,623	\$1,809,834,729	\$1,976,196,216
Aug	\$1,851,554,487	\$1,795,889,538	\$1,630,928,545	\$1,660,727,849	\$1,828,518,518	\$1,970,698,201	\$2,056,904,078	\$2,243,047,616
Sep	\$2,037,986,944	\$1,967,085,708	\$1,797,077,325	\$1,824,613,814	\$2,016,242,900	\$2,166,208,496	\$2,276,654,445	\$2,483,031,052
Oct	\$2,188,914,374	\$2,093,280,251	\$1,930,551,815	\$1,962,360,233	\$2,176,094,186	\$2,329,555,172	\$2,451,275,398	\$2,666,915,709
Nov	\$2,373,605,530	\$2,262,350,573	\$2,103,499,813	\$2,141,134,931	\$2,371,353,991	\$2,542,434,361	\$2,679,520,927	\$2,908,924,005
Dec	\$2,561,644,375	\$2,430,392,164	\$2,272,355,962	\$2,316,833,695	\$2,570,678,506	\$2,744,218,525	\$2,900,820,760	\$3,144,038,076

**Glossary:**

**Tourism & Recreation Taxable Sales:** Restaurants, lunchrooms, Catering Services, Drinking Places (Alcoholic Beverages on Premises), Hotel/Motel Accommodations, Rooming Houses, Camps & Other Lodging, Camera & Photographic Supply Stores, Gifts, Cards, Novelty, Hobby, Crafts & Toy Stores, Admissions, Amusement & Recreation Services, Rental of Tangible Personal Property, Exempt Facilities.

**Retail Taxable Sales:** Food & Beverage Stores, Meat Markets, Poultry, Seafood Dealers, Bakeries, Eating & Drinking Places (not restaurants), Candy, Nut, Confectionary & Dairy Product Stores, Apparel & Accessory Stores, Shoe Stores, Hat Shops, Department Stores, Variety Stores, Drug Stores Jewelry, Leather and Sporting Goods, Farm Implements & Equipment Suppliers, Used Merchandise Stores, Second-Hand Stores, Antique Shops, Sewing, Needlework & Piece Goods Stores, Automotive Dealers (Sale/Lease), Tag Agencies & Tax Collectors, Automotive Accessories & Parts, Gasoline Service Stations, Automobile Repair & Services, Aircraft Dealers, Boat Dealers, Home Furniture, Furnishings, & Equipment, Household Appliances & Accessories, Radio, Television, Consumer Electronics, Computers, Music Stores, Barber Shops, Beauty Shops, and Personal Appearance Services, Book Stores, Tobacco Stores & Stands, Florists, Fuel Dealers, LP Gas Dealers, Itinerant Vendors, Peddlers, Direct Selling Establishments, Laundry, Garment, Linen & Other Cleaning Services, Horse, Cattle and Pet Dealers, News Stands, Social, Fraternal, Commercial Clubs & Associations (All Dues), Pawn Shops, Communication, Telephone, Telegraph, Radio & Television Stations, Repair of Tangible Personal Property, Nurseries, Landscapes, Tree Experts, Vending Machine Operators, Utilities, Electricity, Gas, Water, Sewer, Flea Market Management & Space Providers, Other Professional Services, Taxable Services (per Chapter 212, F.S.), Miscellaneous, Other.

**Commercial Taxable Sales:** Feed & Seed Stores, Retail Nurseries, Paint, Wallpaper & Hardware Dealers, General Miscellaneous Merchandise Stores, Store & Office Equipment, Office Supplies, Building Contractors, Heating & Air Conditioning, Electrical, Plumbing, Well Drilling, Pipes, Decorating, Painting, Papering, Drapery Installation, Lumber & Other Building Material Dealers, Machine Shops, Foundries, Iron Work, Storage & Warehousing, Industrial Machinery, Fabrication & Sales of Cabinets, Windows, Doors, Awning, Septic Tanks, Neon Signs, Plastic, etc., Manufacturing, Bottlers, Transportation, Railroads, Airlines, Bus, Trucking Lines, Graphic Arts, Printing, Publishing, Engraving, Binding, Blueprinting, Insurance, Banking, S&L's, Research Information Services, Income Tax Reports, Sanitary & Industrial Supplies, Advertising, Mining, Drilling, Top Soil, Clay, Sand, Fill Dirt, Importing & Exporting, Medical, Dental, Surgical, Optical & Related Professional Services, Wholesale Dealers, Schools, Colleges, & Educational Services, Lease or Rental of Commercial Real Property, Privately Owned Parking Lots, Boat Docks, & Aircraft Hangers, Veterinary Services, Commercial Fishing.



## Monroe County Sales Tax Data Tourism & Recreation Taxable Sales 2008 - 2014

